

RESILIENT SR37



California Department of Transportation State Route 37 Tolay Creek Bridge Replacement

BCDC Permit No. 2025.003.00

Caltrans EA 1Q76U

BCDC Commission Meeting · May 7, 2026

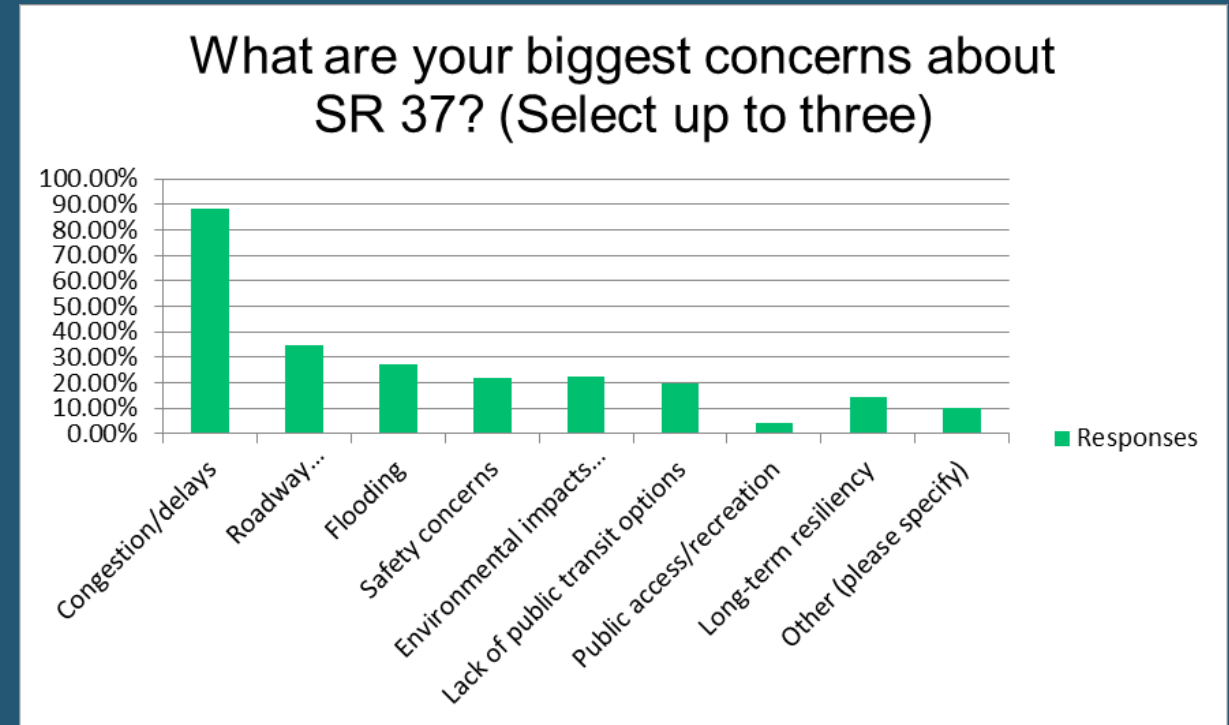
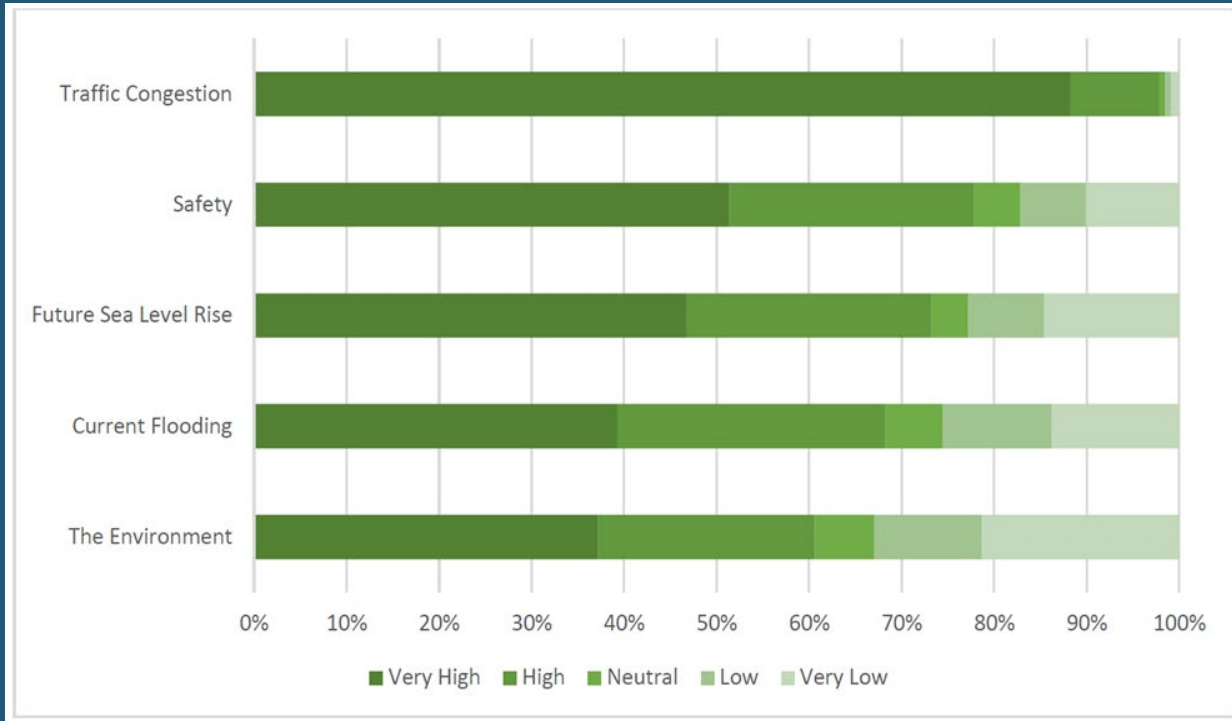
ONE CORRIDOR, ONE TEAM, MANY SOLUTIONS.

Project Goals

- Improve traffic operations
- Improve flood resiliency
- Restore hydrologic and wildlife connectivity at Tolay Creek Bridge



Project Advances Community Priorities: #1 - Travel Time



Ranked Level of Concern- 2017/2018 Survey

2025 Survey

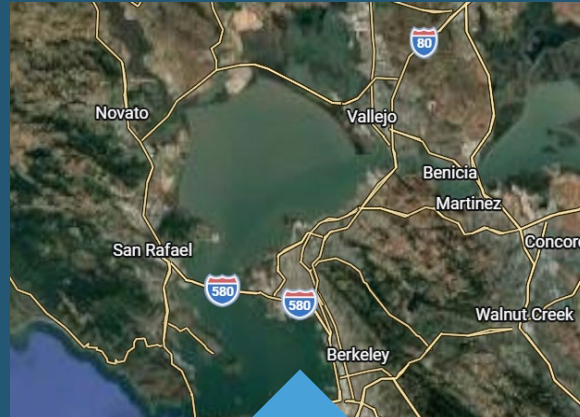
Regional Health, Safety, and Welfare



Emergency Response & Evacuation

↑ Emergency response

↑ Evacuation route effectiveness



Economic Welfare

↑ Connect people to job markets & affordable housing

↑ Support movement of goods



Travel Time & Transit

↑ Roadway operations

↓ Congestion

Environmental Benefits: Species & Habitat

Fish - Creates habitat and improves connectivity

Salt marsh birds and mammals: Improves habitat connectivity, creates new forage habitat

Overall – Impacts during construction; Creates and enhances tidal marsh habitat long term

California Black Rail



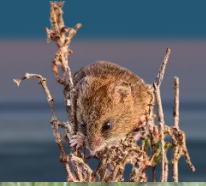
California Ridgway's Rail



Salt Marsh Common Yellow Throat



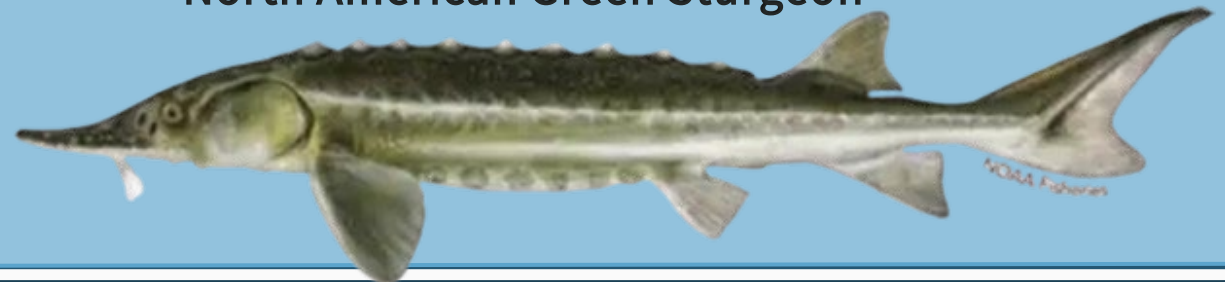
Salt Marsh Harvest Mouse



Longfin Smelt



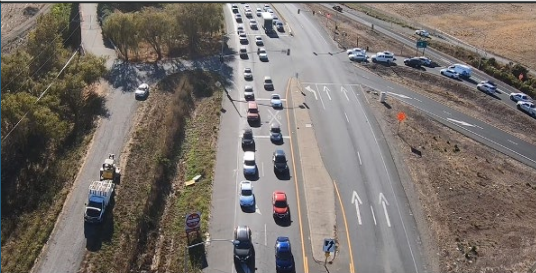
North American Green Sturgeon



Equity

- Equitable Development and Outreach
 - scoping meetings, public meetings, STA environmental working groups, town halls, and surveys.
- Project Addresses Core Community Concerns
- Alignment with BCDC Policies

Travel Times & Reliability



Transit & Carpools



Public Access, Ecology, & Resilience

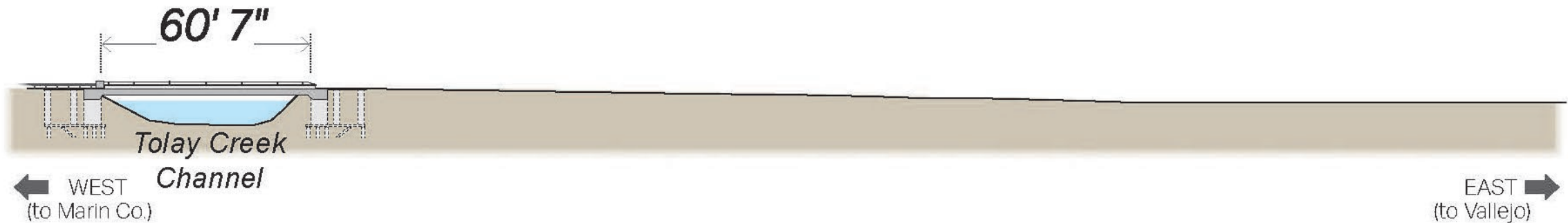


Economic Development

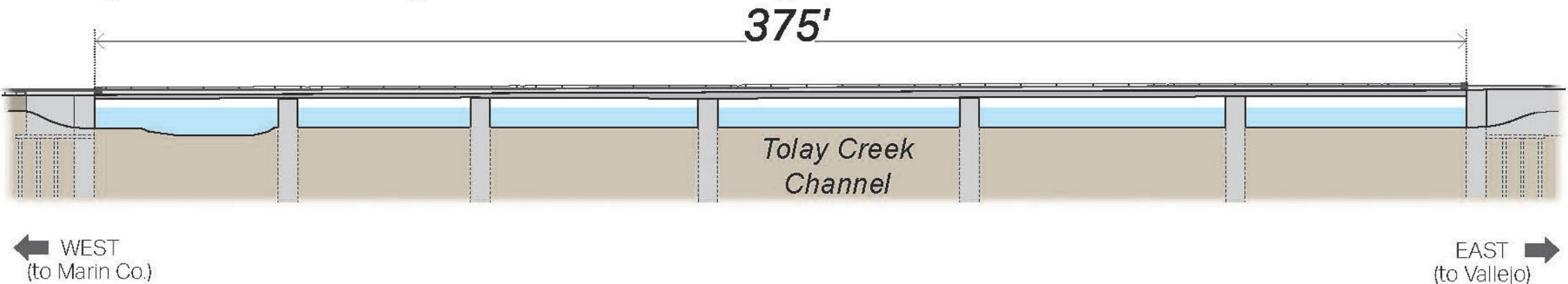


Bridge Replacement and Channel Widening

Existing Tolay Creek Bridge



Proposed Tolay Creek Bridge





0 300
Feet

Existing
Roadway

121

Tolay Creek

60-foot Two-Lane
Bridge

2-Lane
Highway

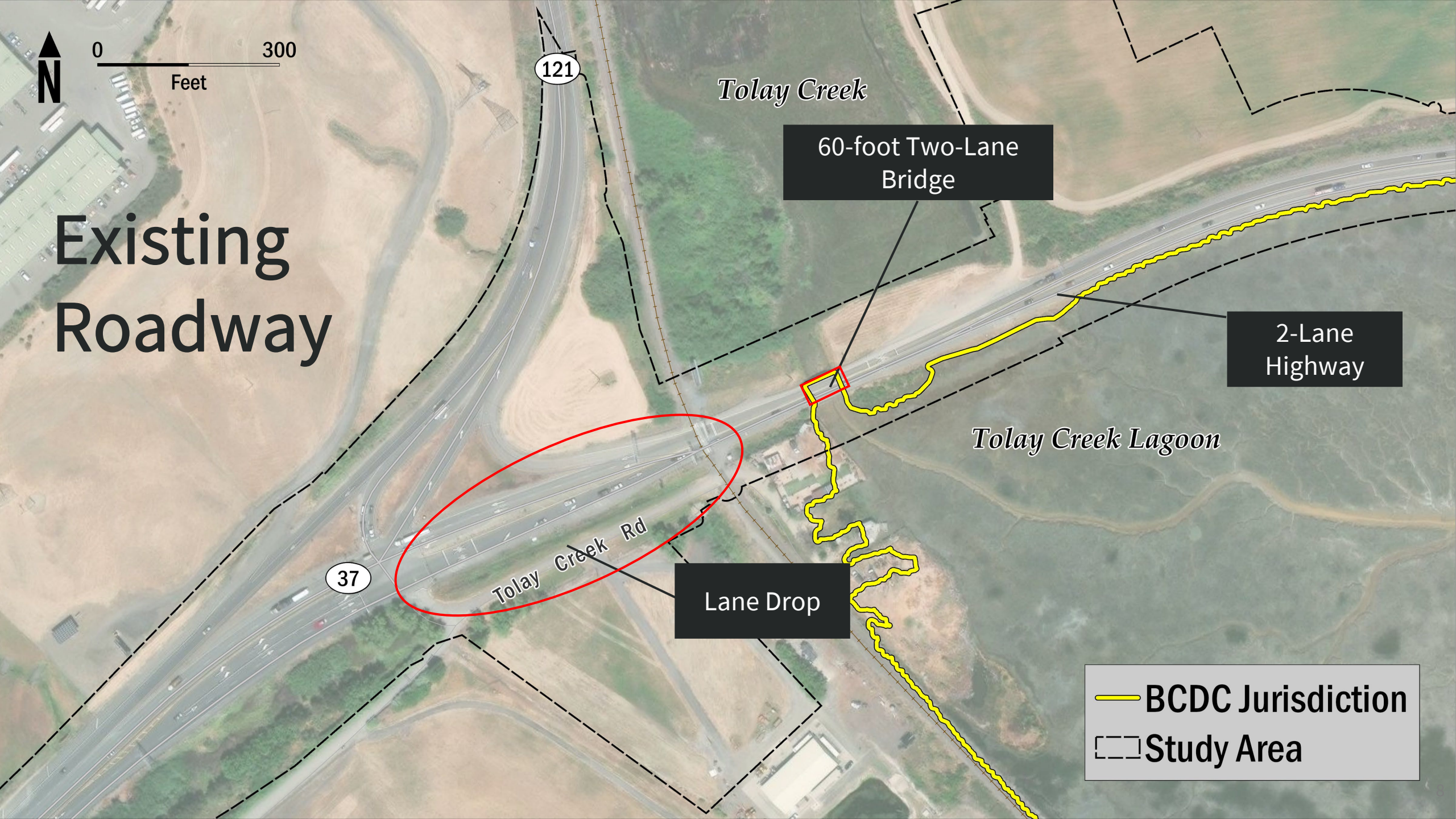
Tolay Creek Lagoon

37

Tolay Creek Rd

Lane Drop

— BCDC Jurisdiction
- - - Study Area





0 300
Feet

121

Tolay C

375-foot Five-Lane
Bridge

Proposed Lane Configuration

37

4-Lane
Highway

Tolay Creek Lagoon

Tolay Creek Rd

— BCDC Jurisdiction

▭ Study Area

■ Bridge

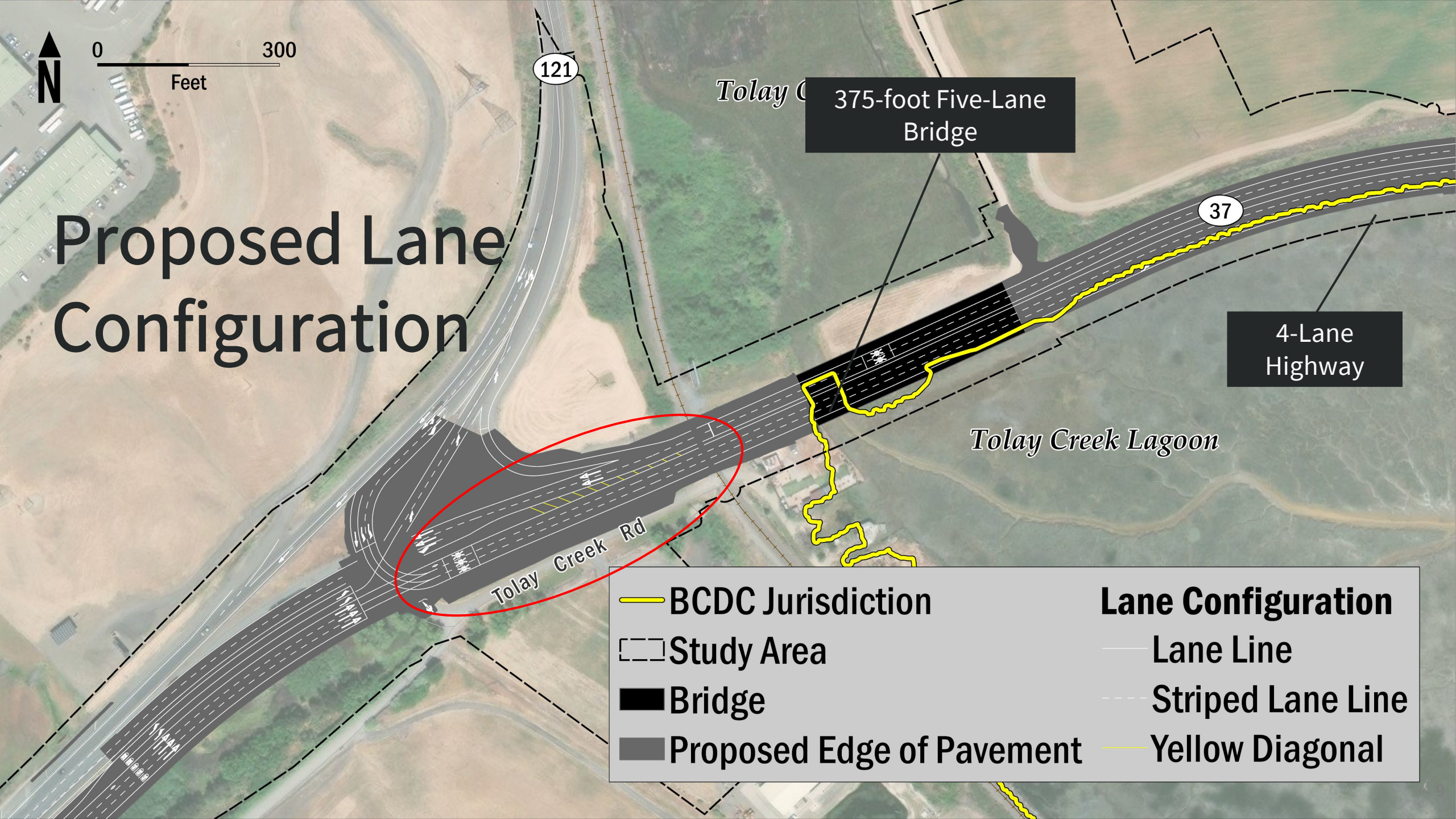
■ Proposed Edge of Pavement

Lane Configuration

— Lane Line

- - - Striped Lane Line

— Yellow Diagonal

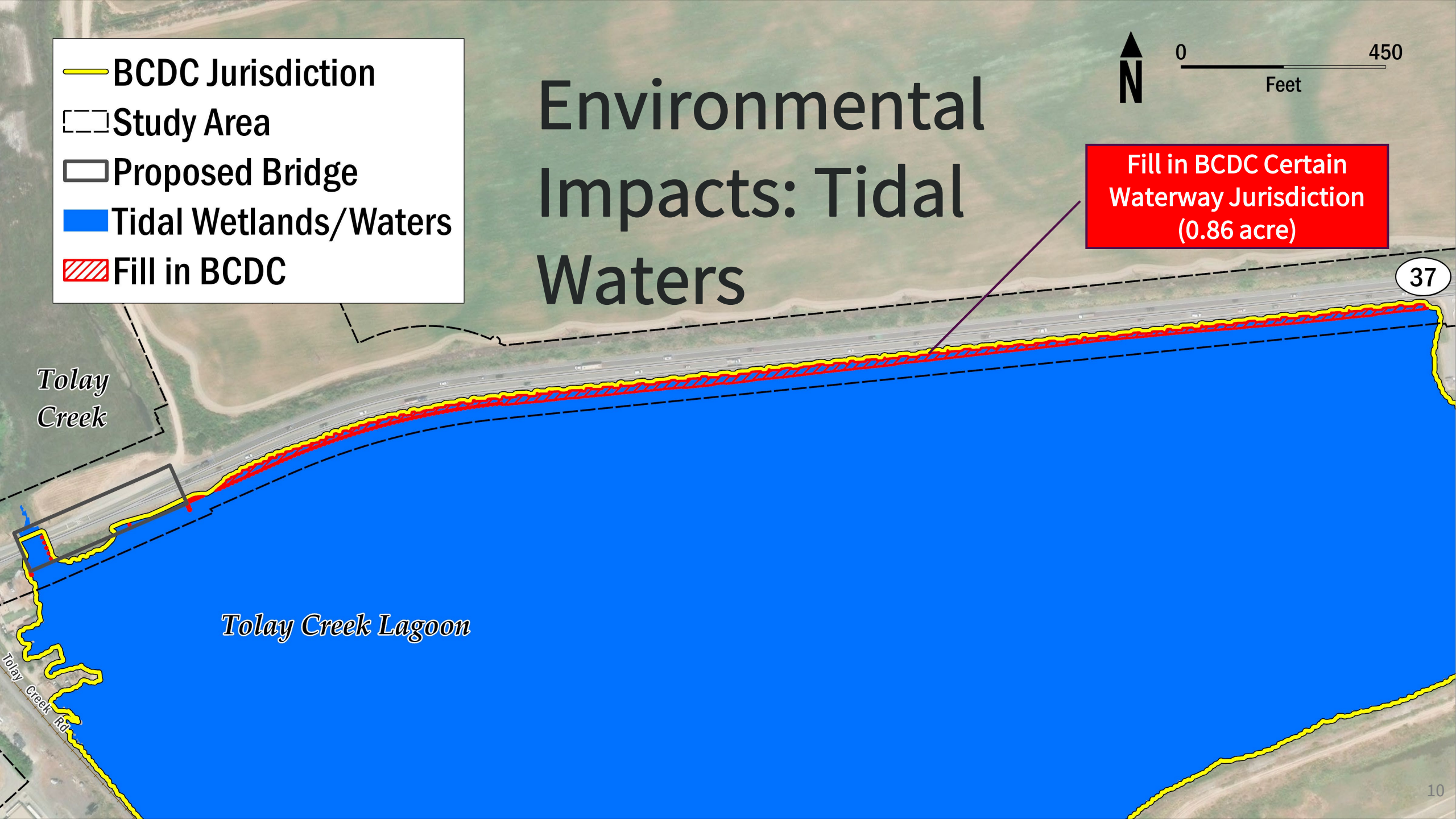


- BCDC Jurisdiction
- ▭ Study Area
- ▭ Proposed Bridge
- Tidal Wetlands/Waters
- ▨ Fill in BCDC



Environmental Impacts: Tidal Waters

Fill in BCDC Certain Waterway Jurisdiction (0.86 acre)



Tolay Creek

Tolay Creek Lagoon

37

Tolay Creek Rd

121



0 150
Feet

Tolay Creek

Existing Conditions

60-foot Two-Lane Bridge

37

-  BCDC Jurisdiction
-  Study Area
-  Tidal Wetlands/Waters

Tolay Creek Lagoon

121



0 150
Feet





Environmental Benefits

Tolay Creek



37

0.63 acre

0.51 acre

-  BCDC Jurisdiction
-  Study Area
-  Proposed Bridge
-  Tidal Wetlands/Waters

Created Waters

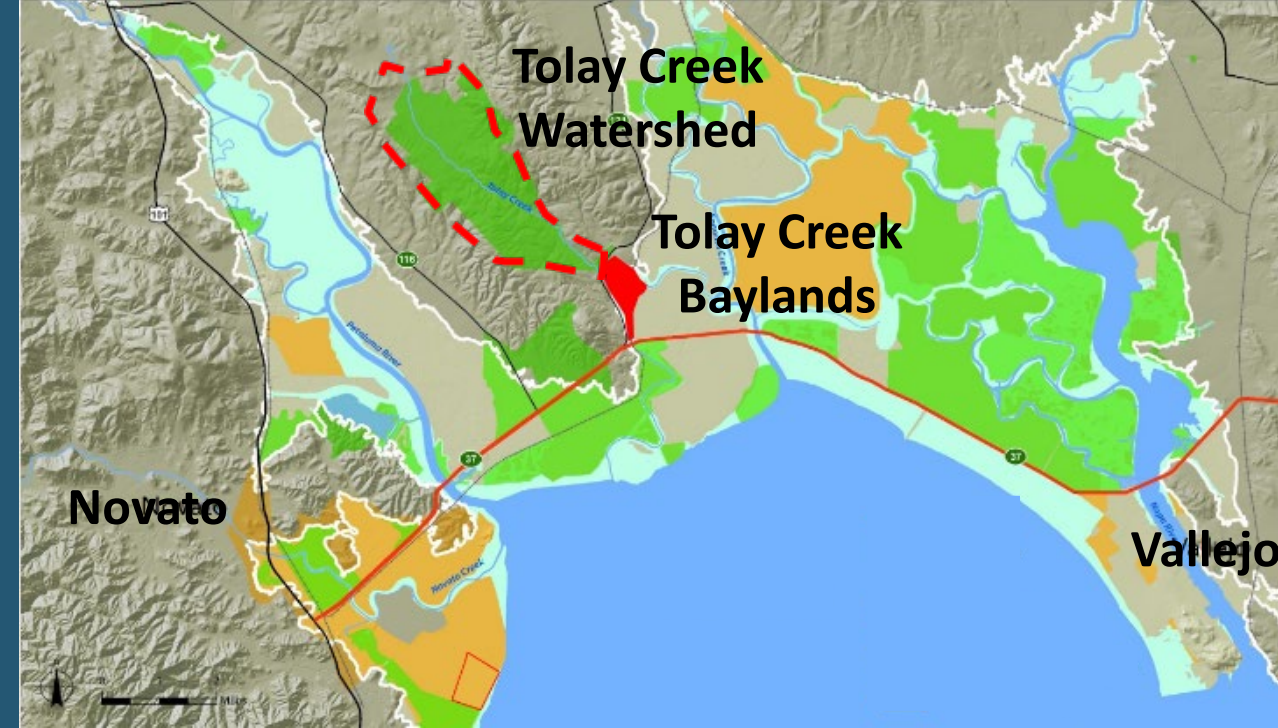
-  New Waters/Expanded BCDC
Certain Waterway Jurisdiction
-  New Waters outside BCDC
Jurisdiction

Net Gain in Waters = 0.28 acre

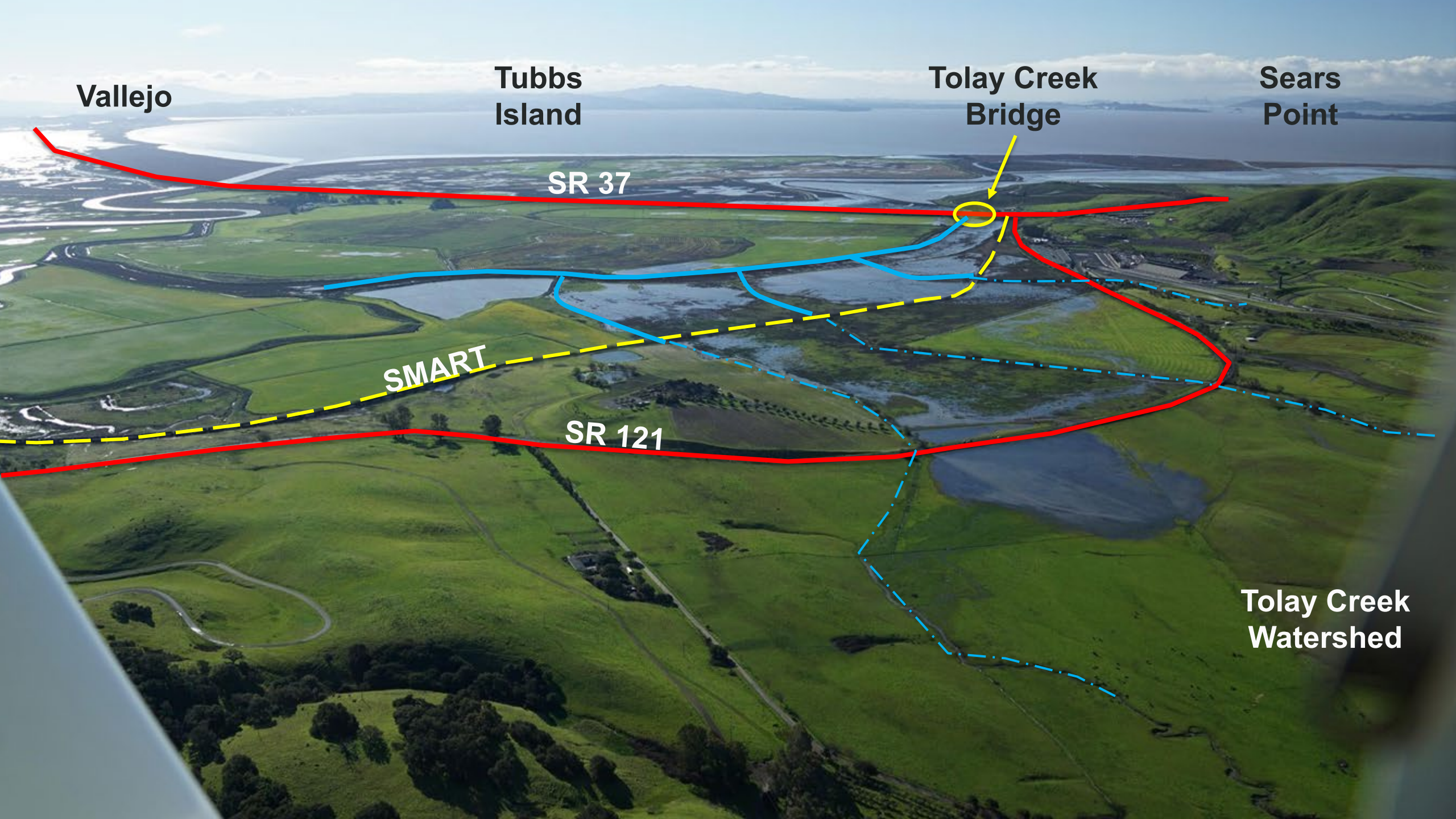
0.63 + 0.51 acres of new waters – 0.86 acres of fill in BCDC = 0.28 acre

Tolay Creek Considerations

- Existing channel is undersized, resulting in minimal tidal exchange
- Hundreds of acres of tidal marsh are disconnected
- Tolay Creek watershed is disconnected
- Restoration requires lengthening the bridge and removing fill







Vallejo

Tubbs
Island

Tolay Creek
Bridge

Sears
Point

SR 37

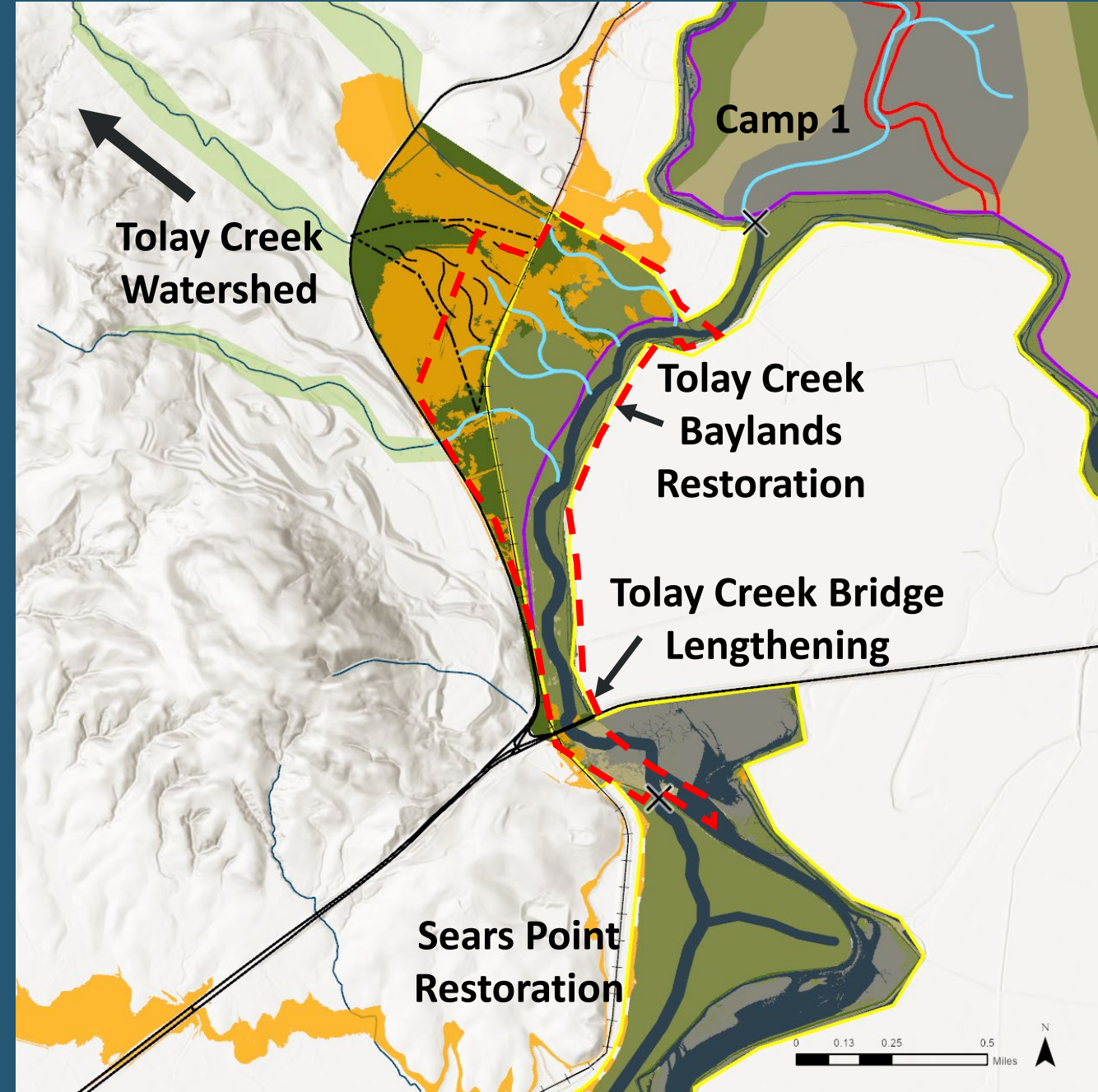
SMART

SR 121

Tolay Creek
Watershed

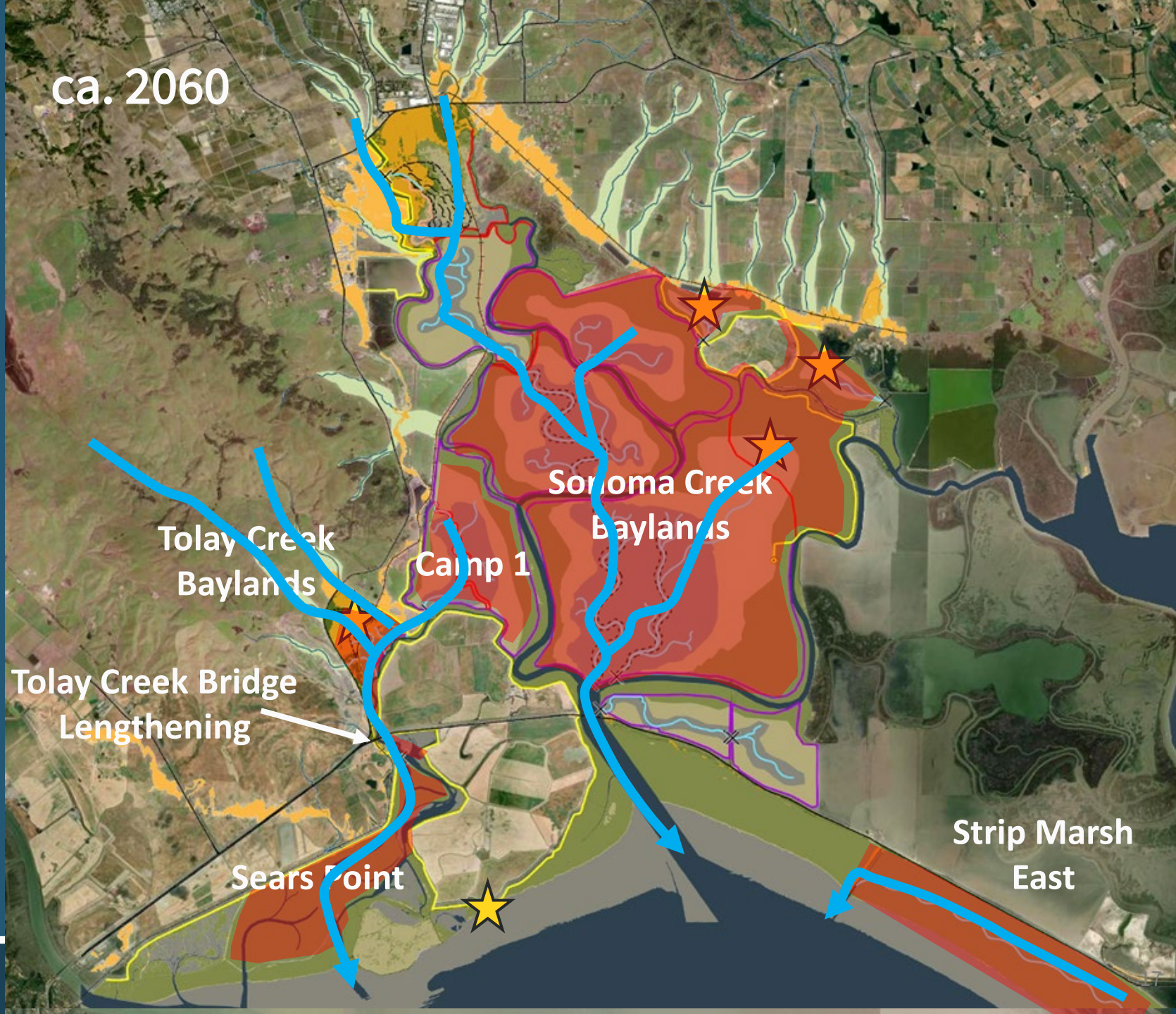
Environmental Benefits: Tolay Creek Baylands

- Increase tidal exchange
- Restore hydrologic connectivity with the watershed
- Reestablish sediment transport processes
- Expand and enhance rare habitat assemblages
- Facilitate future restoration in Camp 1



Landscape Context North Bay

- Tolay Creek Baylands Restoration (250+ acres)
- Sears Point Restoration (960 acres)
- Camp 1 (950 acres)
- Sonoma Creek Baylands Restoration (9,000 acres)
- Strip Marsh East Enhancement (900 acres)
- Beneficial use of excavated fill



Public Access: San Francisco Bay Trail Improvements

River Park, Vallejo Waterfront

- In-Lieu Fee Compensation
- Scope includes:
 - Pave River Park path
 - Improve accessibility and safety
 - Vegetation management for improved views
 - New benches
 - New interpretive signage



Project Outcomes

- Congestion Relief – Reduce Eastbound Congestion
- Community Benefits – Enhance Access and Opportunities
- Resilience – Reduce Flooding Risks
- Environmental Benefits – Create New Waters & Enable Planned Tolay Creek Baylands Restoration



Thank you!