

Exhibit D. Oakland Harbor Entrance, Inner, and Outer Harbors

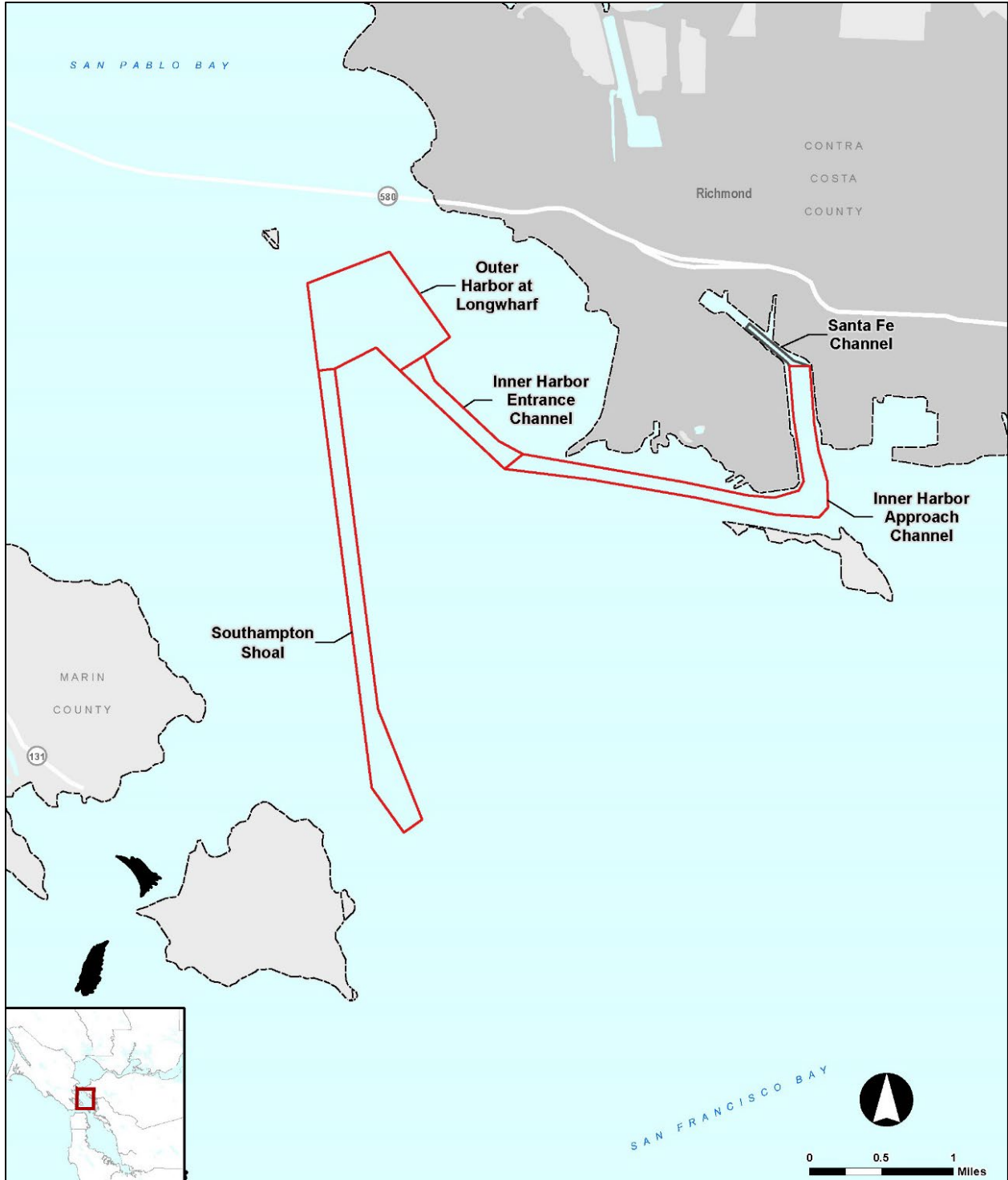


Exhibit E: Richmond Harbor (Southampton Shoal, Outer Harbor, and Inner Harbor)

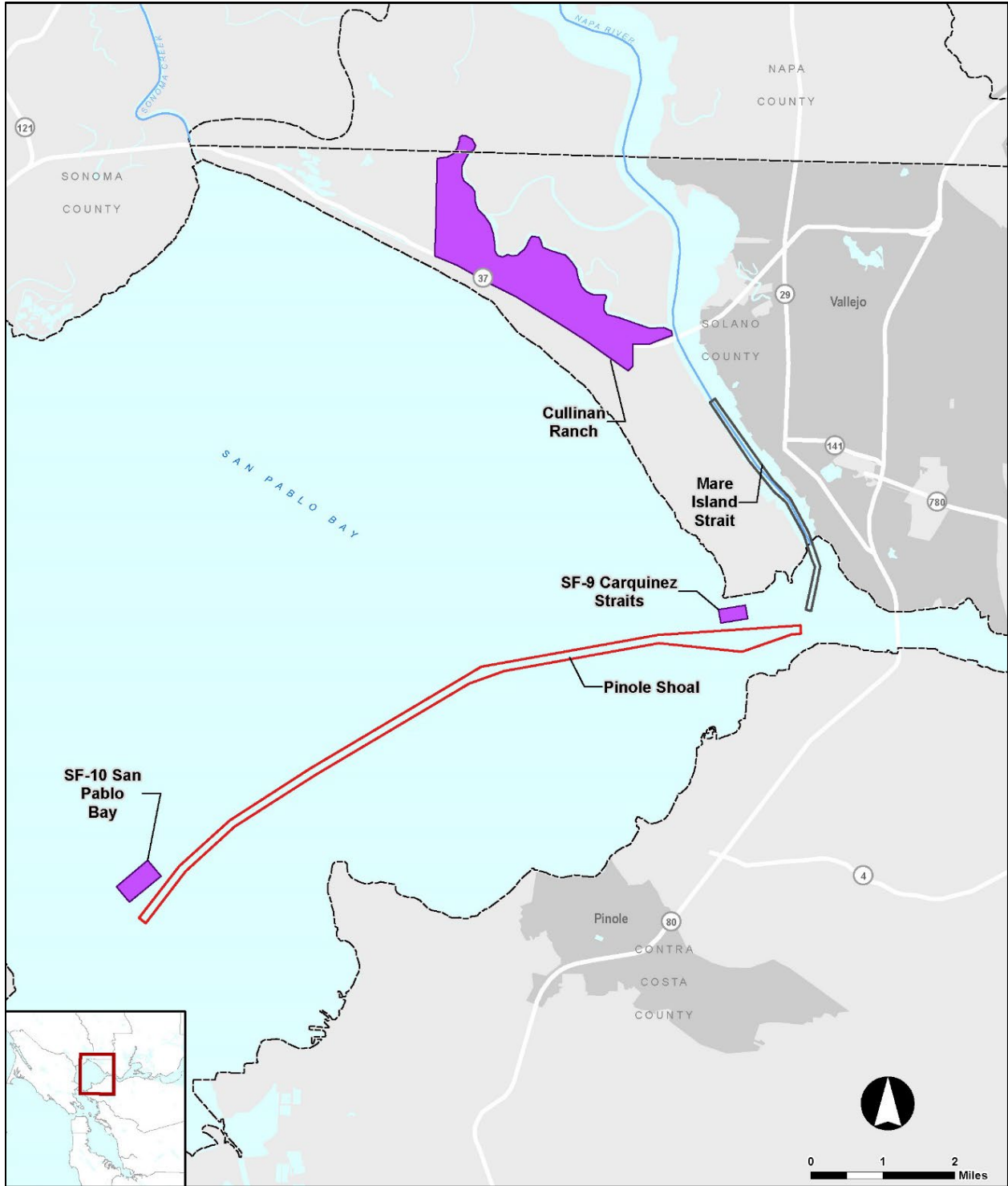


Exhibit F: Pinole Shoal Channel (also shown SF-9, SF-10, and Cullinan Ranch)

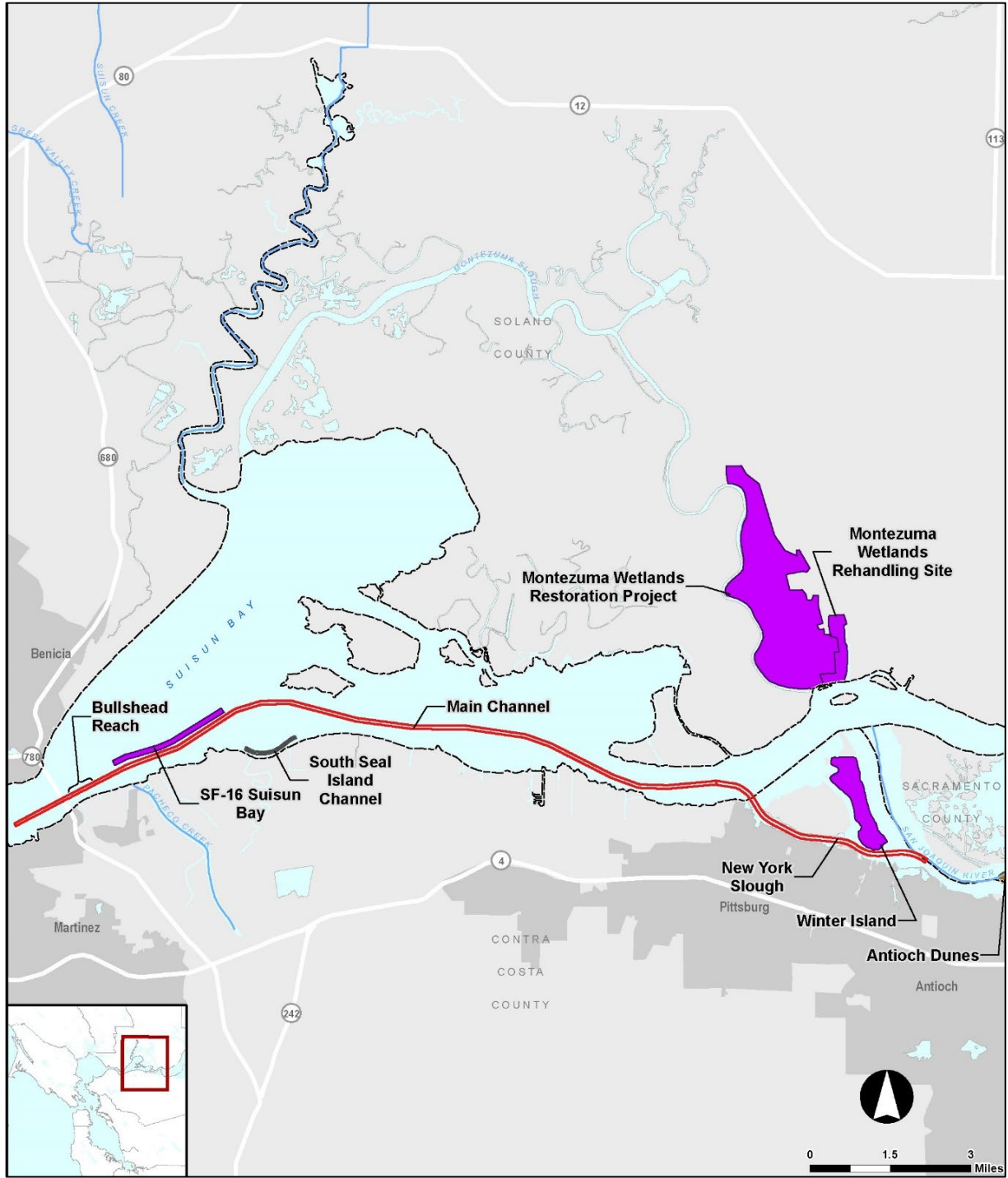


Exhibit G: Suisun Bay and New York Slough Channels (also shown SF-16, Montezuma Wetlands Restoration Project)

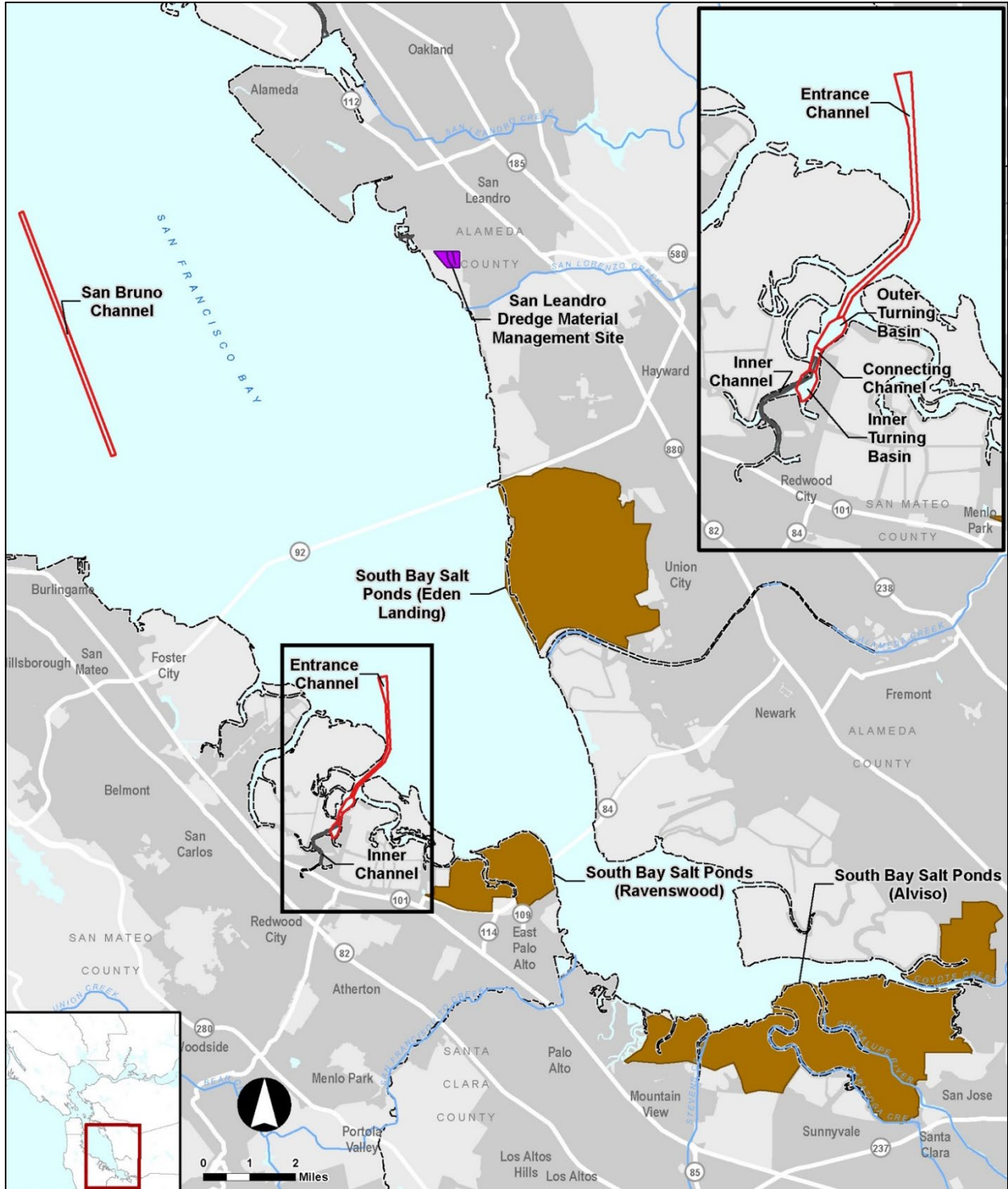


Exhibit H: Redwood City Harbor (also shown South Bay Salt Ponds)

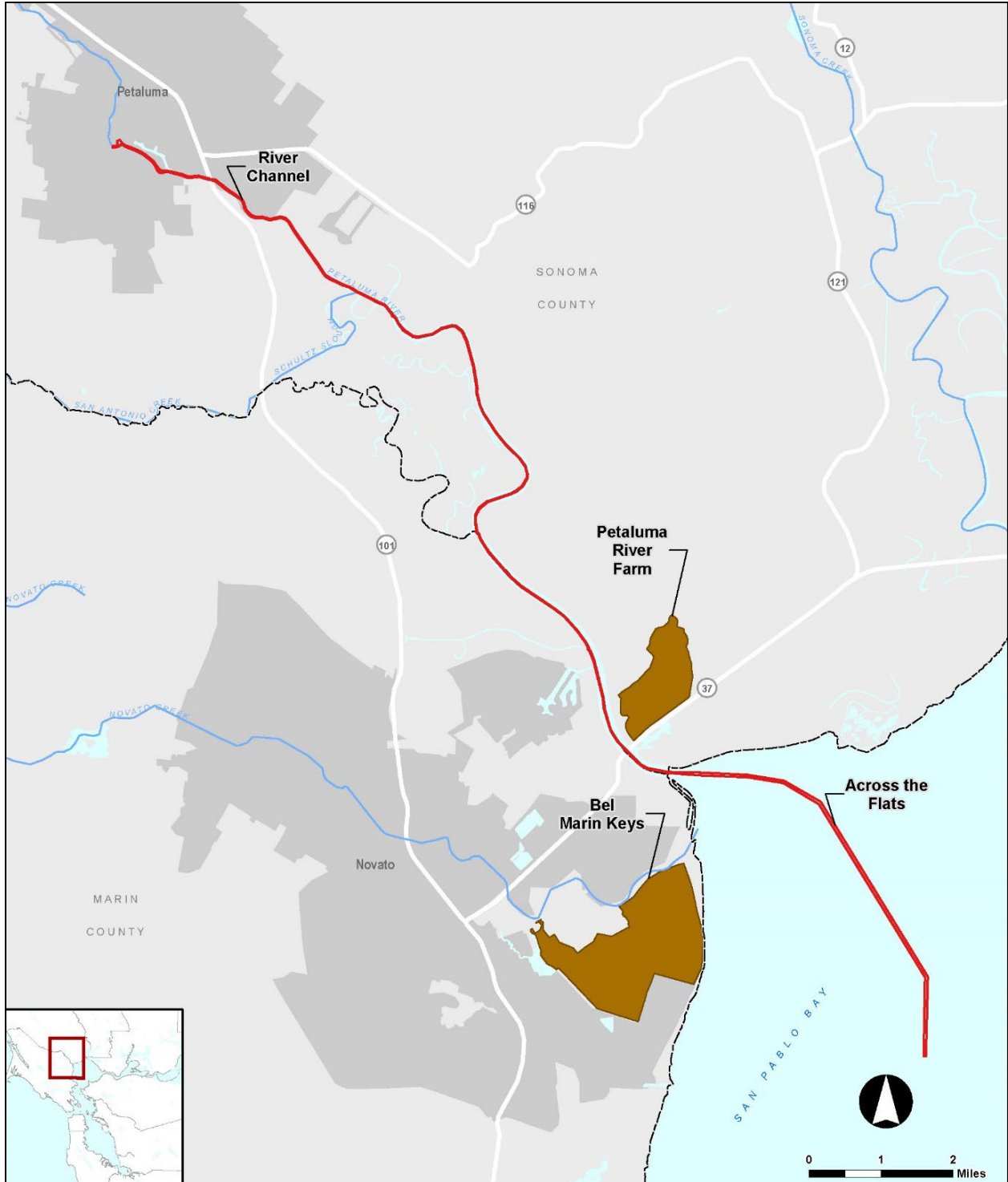
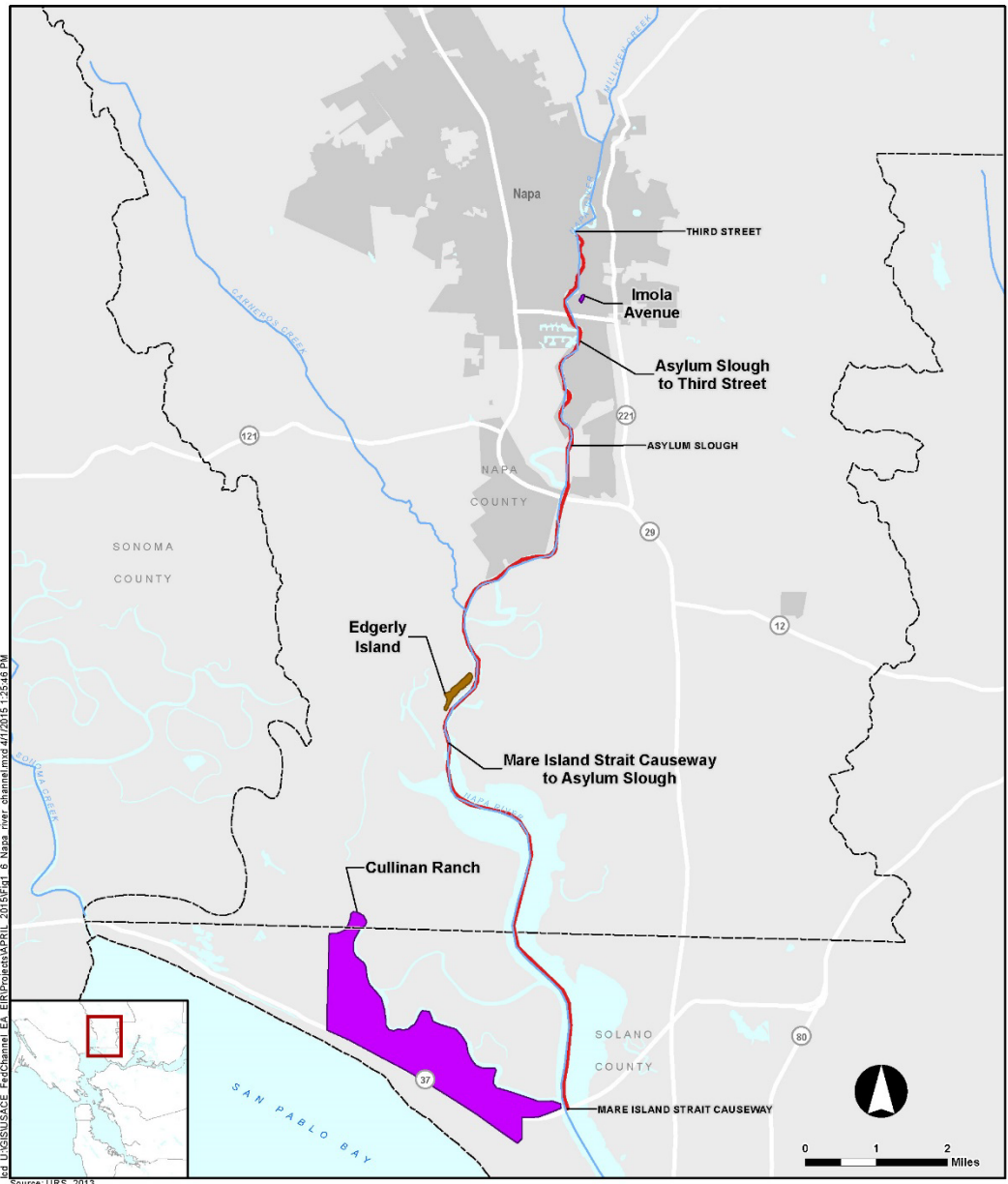


Exhibit I: Petaluma River Channel (also shown Bell Marin Keys)



I:\GIS\USACE_FedChannel_EA_EIR\Projects\APRIL_2015\Fig_1_Napa_river_channel.mxd 4/1/2015 1:25:48 PM
 Source: URS, 2013.

- Highway
- Existing Placement Site
- Potential Future Placement Site
- County boundary
- Dredge Locations Included in EA/EIR

NAPA RIVER CHANNEL
 Federal Navigation Channels EA/EIR
 U.S. Army Corps of Engineers
 Bay Area, California
 April 2015

FIGURE 1-6

Exhibit J: Napa River Channel (also showing Cullinan Ranch)

