

# **TRANS BAY CABLE MAINTENANCE PROJECT**

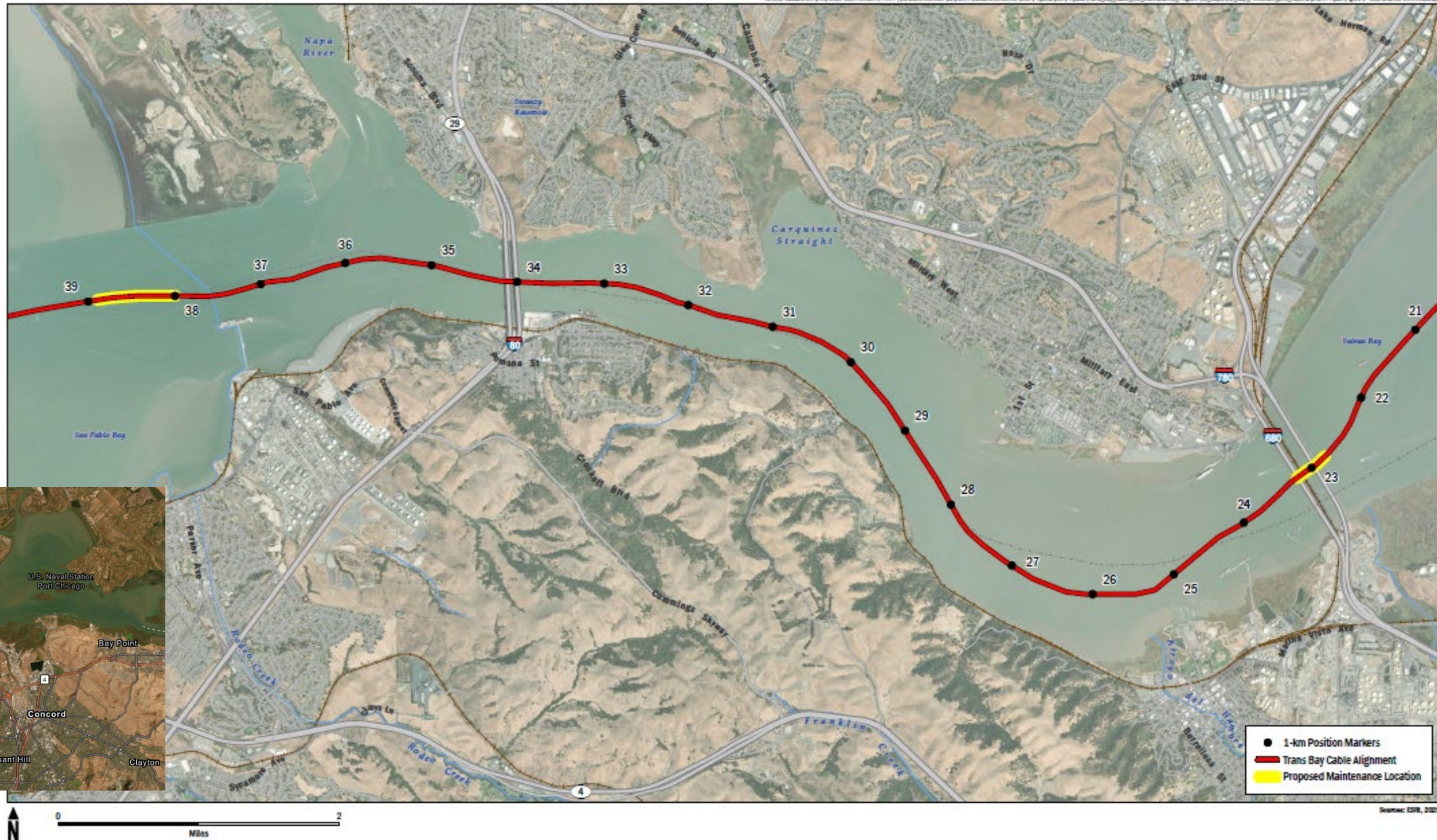
BCDC Permit Application No. 2006.005.04md

Applicant: Trans Bay Cable, LLC

May 21, 2026

Sam Fielding, BCDC

# PROJECT LOCATION



May 21, 2026

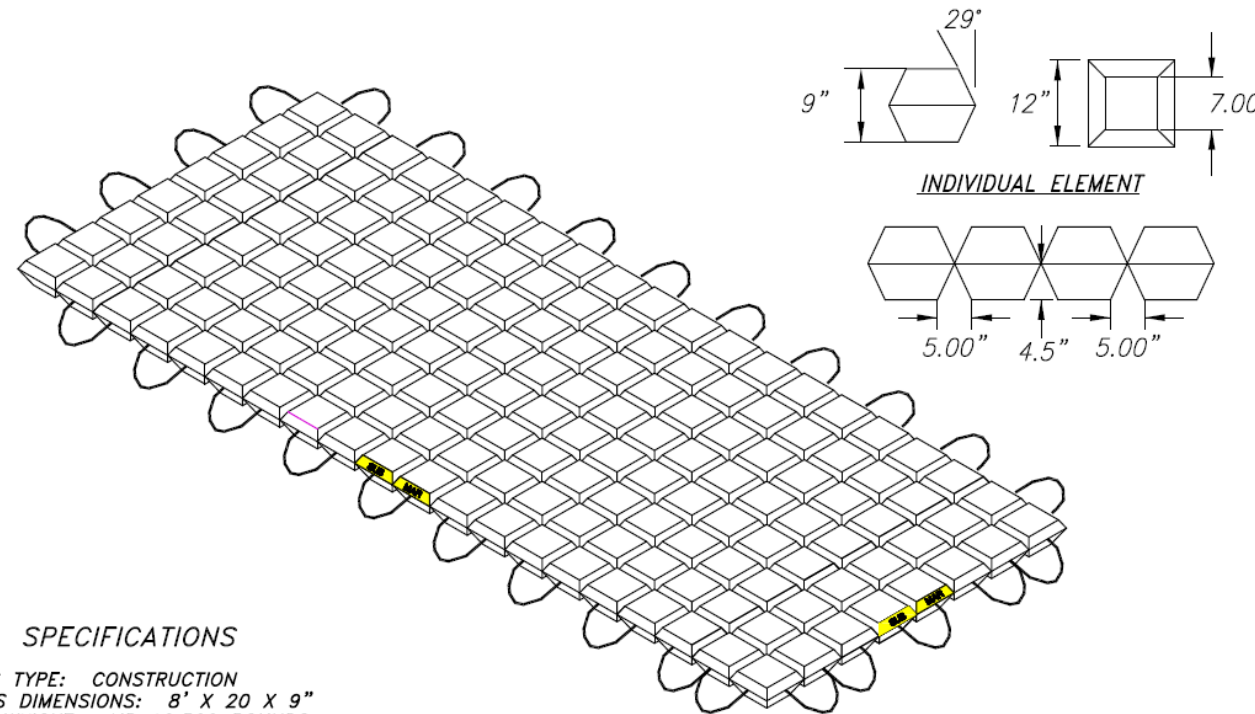


# PERMITTING HISTROY

- 2007: original authorization of transmission cable
  - ~50-mile-long cable (5,237 cubic yards)
  - Place concrete mattresses/grout bags (500 cubic yards)
- 2012: Amendment No. One (after-the-fact)
  - Place concrete mattresses (7,370 square feet)
- 2015: Amendment No. Two (after-the-fact)
  - Repair section of cable damaged by vessel anchor (440 linear feet)
- 2020: Amendment No. Three
  - 5-year maintenance of cable
  - Rebury 16,410 linear feet of cable
  - Place concrete mattresses/rock bags (290 cubic yards; 4,000 square feet)

# PROPOSED PROJECT

- In East San Pablo Bay
  - Install ~300 linear feet of protective covering;
  - Install ~2,200 cubic yards (0.4 acres) concrete mattresses.
- In Carquinez Strait
  - Install ~1,000 linear feet of protective covering;
  - Install ~500 cubic yards (0.1 acres) concrete mattresses.



## SPECIFICATIONS

MATTRESS TYPE: CONSTRUCTION  
MATTRESS DIMENSIONS: 8' X 20 X 9"  
MATTRESS WEIGHT: AIR 10,500 POUNDS  
MATTRESS WEIGHT SUBMERGED: 6,000 POUNDS (APPROX.)  
CONCRETE DENSITY: 145 LBS. PER CU. FT., 4,000 PSI  
160 ELEMENTS: 5/8" ULTRA VIOLET STABILIZED COPOLYMER  
EXTRUDED FIBER ROPE, MINIMUM TENSILE STRENGTH 9,500 POUNDS

# BAY FILL

- Approximately 2,700 cubic yards of new fill;
- Over approximately 0.5 acres (21,780 square feet) of subtidal Bay;
- Along approximately 4,000 linear feet of existing submarine cable.

# PROJECT IMPACTS

- Solid fill in the Bay
- Change in subtidal habitat and bathymetry

# SPECIAL CONDITIONS

- In-water work window;
- Post-construction report and bathymetric monitoring;
- Compensatory Mitigation:
  - Committed to purchase 0.5 Estuarine Wetland Mitigation Advance Credits from the San Francisco Bay In-Lieu Fee Program
  - Representing mitigation at a 1:1 ratio

# APPLICABLE POLICIES

- McAteer-Petris Act and the San Francisco Bay Plan
  - Bay Fill
  - Subtidal Areas
  - Water Surface Area and Volume
  - Fish, Other Aquatic Organisms and Wildlife
  - Mitigation

# 2006.005.04MD STAFF RECOMMENDATION

## Recommend Approval with Conditions, including:

- Environmental Protection: Implement measures to protect natural resources and water quality during construction
- Monitoring: Submit a post-construction report and provide 3 years of bathymetric monitoring
- Mitigation: Offset project impacts at a 1:1 ratio via purchase of 0.5 Estuarine Wetland Mitigation Advance Credits from the San Francisco Bay In-Lieu Fee Program

# THANK YOU



[Sam.Fielding@bccdc.ca.gov](mailto:Sam.Fielding@bccdc.ca.gov)



[www.bccdc.ca.gov](http://www.bccdc.ca.gov)