

# Trans Bay Cable 2026 Cable Protection Project

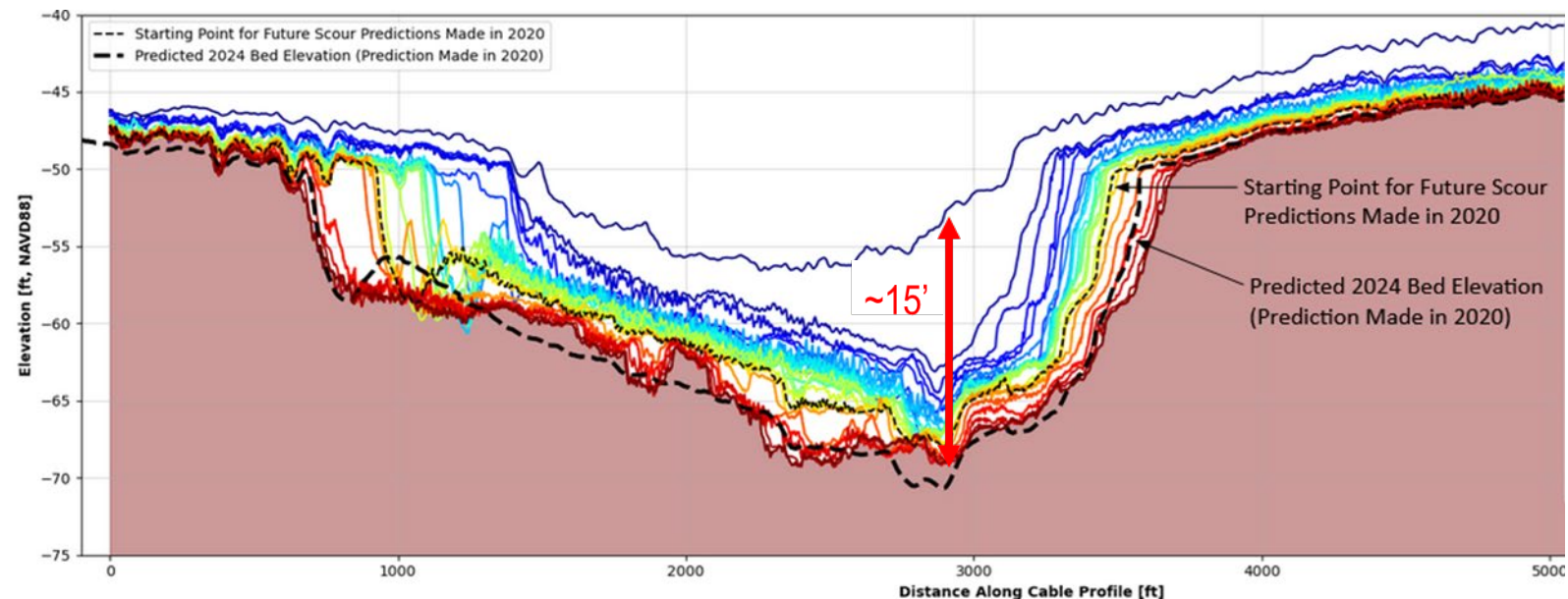
May 21, 2026



# Background

- Submarine cable installed in 2009 from Pittsburg to San Francisco provides 40 percent of San Francisco's power
- Annual monitoring of erosion/accretion of sediment cover
- Cable is at risk in exposed areas within and adjacent to highly-trafficked shipping lanes

East San Pablo Bay  
Erosion Site  
2007-2024



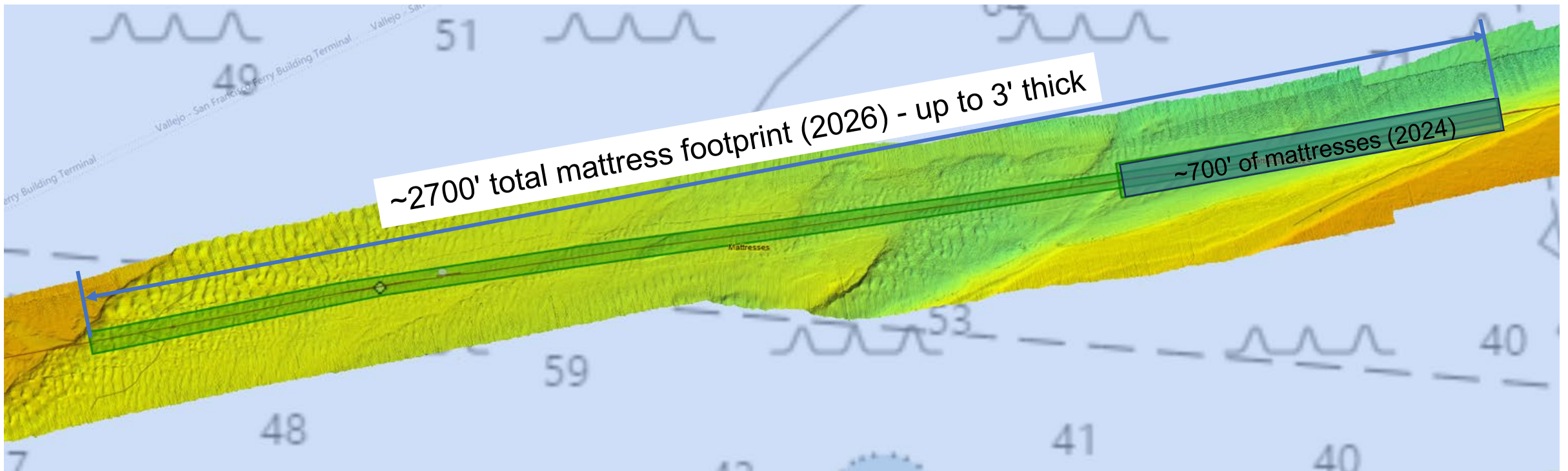
## 2026 Cable Protection Project

- Reduce the risk of damage at sections of the cable in East San Pablo Bay and Carquinez Strait where there has been loss of cover
- Provide protection through installation of polyurethane protective covering and concrete mattresses
  - Polyurethane protective covering acts as additional protection for the cable from external impacts
  - Mattresses are a flexible construction of blocks made from concrete connected with high-tensile, fiber rope
- Fill placement is necessary because cable is at high tension and does not have the “slack” which is required to perform re-burial

# East San Pablo Bay Site

Repair a 3,000-foot-long segment of cable in East San Pablo Bay

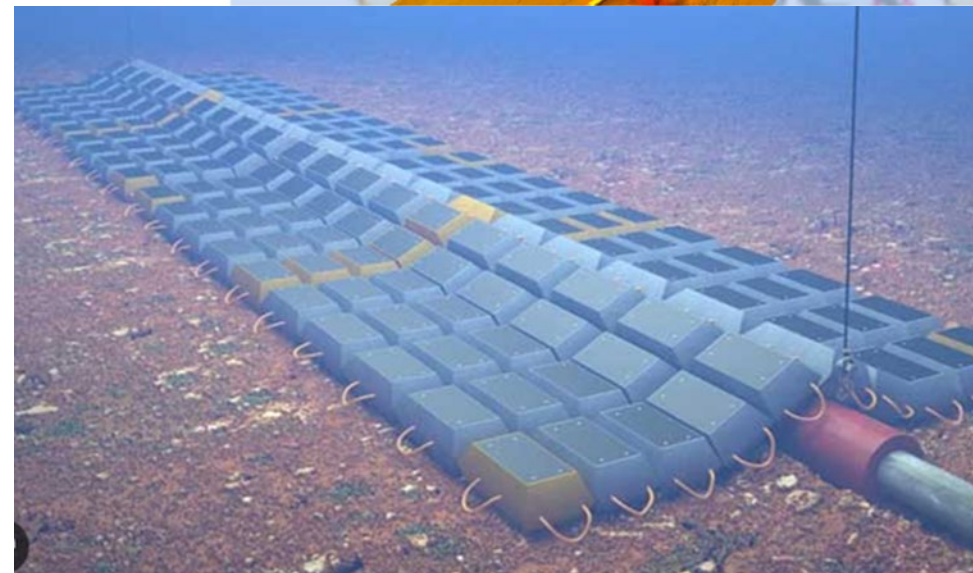
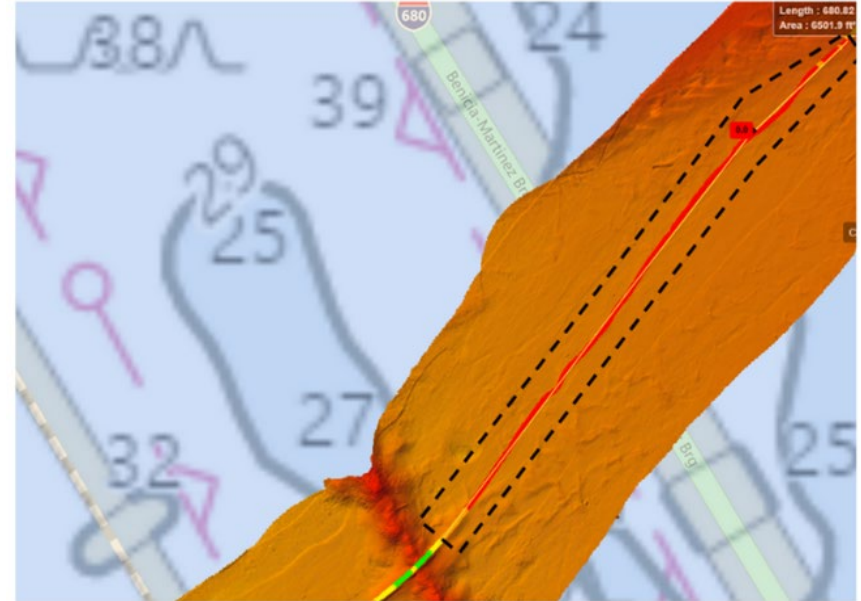
- Installation of approximately 300 linear feet of <1-inch-thick polyurethane protective covering, and
- Installation of approximately 0.4 acre (up to 2,200 cubic yards) of 8-foot by 20-foot and 9-inch-thick, or 11-foot by 20-foot and one-foot-thick, concrete mattresses



# Martinez Site

Repair a 1,000-foot-long segment of cable in Carquinez Strait (north of Martinez)

- Installation of approximately 1,000 linear feet of <1-inch-thick polyurethane protective covering, and
- Installation of approximately 0.1 acre (up to 500 cubic yards) of 8-foot by 20-foot and 9-inch-thick, or 11-foot by 20-foot and one-foot-thick, concrete mattresses



## Construction Schedule and Methods

- Maintenance work to be conducted during planned cable outage in Summer 2026
- Would adhere to in-water work windows for East San Pablo Bay (June 1 to November 30) and Carquinez Strait (August 1 to November 30)
- If work is not completed during the 2026 outage period due to current/tide/wind conditions, mattress placement may need to be completed after the outage period during the remainder of the 2026 in-water work window, or during the 2027 in-water work windows
- Protective covering and mattresses to be installed by coordinated precision crane operations and divers
- Standard BMPs will be used to prevent contaminants from reaching the water

# Environmental Impacts and Mitigation

- Solid fill placement (0.5 acre, 2,700 cubic yards) in open waters of the Bay
- Loss of subtidal habitat
  - Mattresses are likely to become buried over time, and the benthic community may return similar to the pre-existing conditions
- No adverse effects to federal or state listed species
- Negligible effects to hydrology and sediment transport
  - In locations along the alignment where mattresses have been placed, there have been no observable changes in erosion patterns or increased scour
- Compensatory Mitigation
  - Purchase 0.5 advanced estuarine credits from the San Francisco Bay In Lieu Fee Program