

# **BAY PLAN MAPS CARTOGRAPHIC UPDATE**

## **PUBLIC HEARING FOR BAY PLAN AMENDMENT 1-25**

TODD HALLENBECK | GIS SPECIALIST LEAD

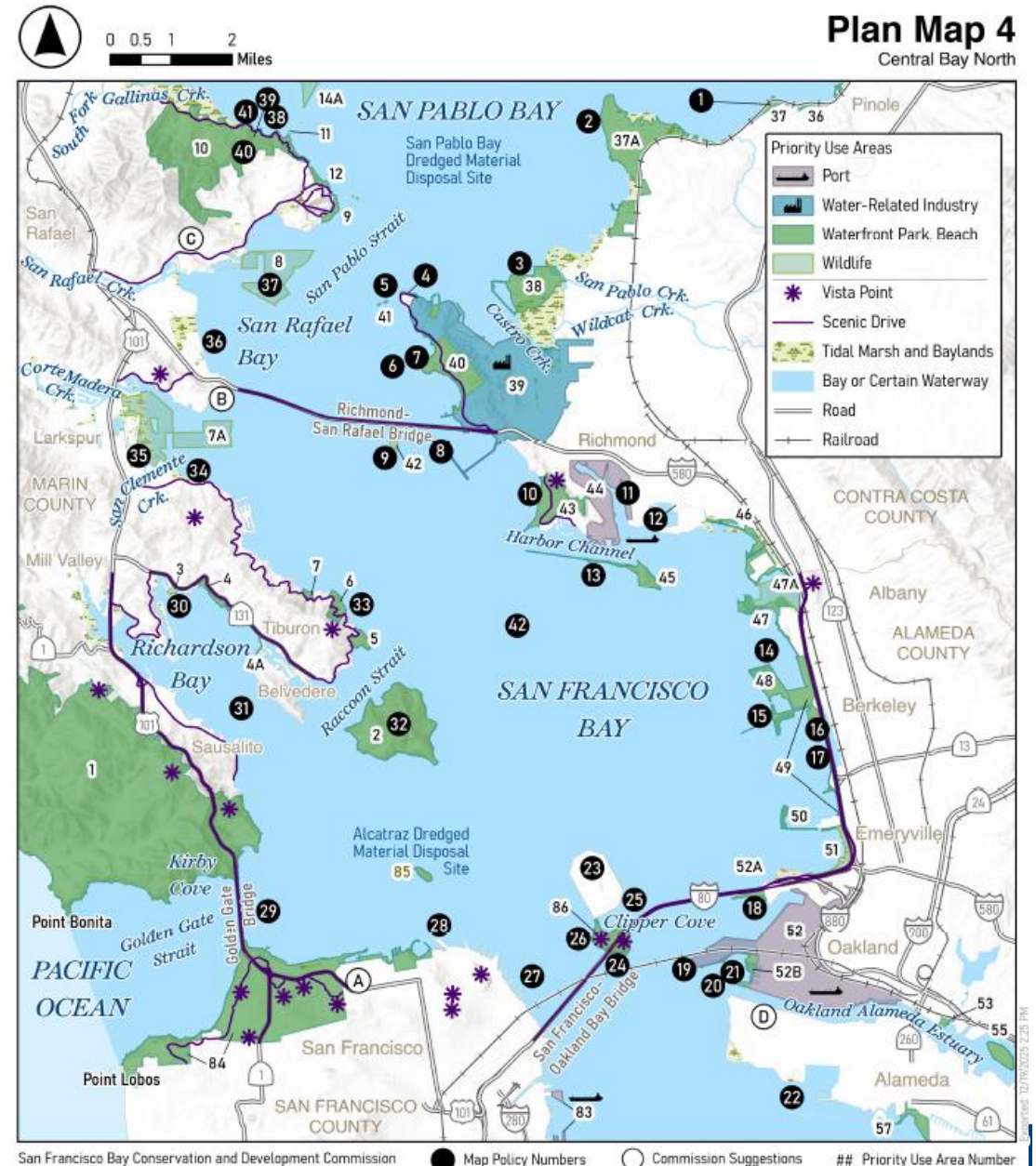
# PRESENTATION

1. Goals for Amendment
2. Background on Bay Plan Maps
3. Overview of Updates + Examples
4. Response to Commission Comments at Initiation
5. Timeline

# GOALS FOR AMENDMENT

- Enhance communication of BCDC policy
- Improve visual clarity and ADA accessibility of the Bay Plan Maps
- Update data sources using best available regional data
- Make it easier to update maps in the future

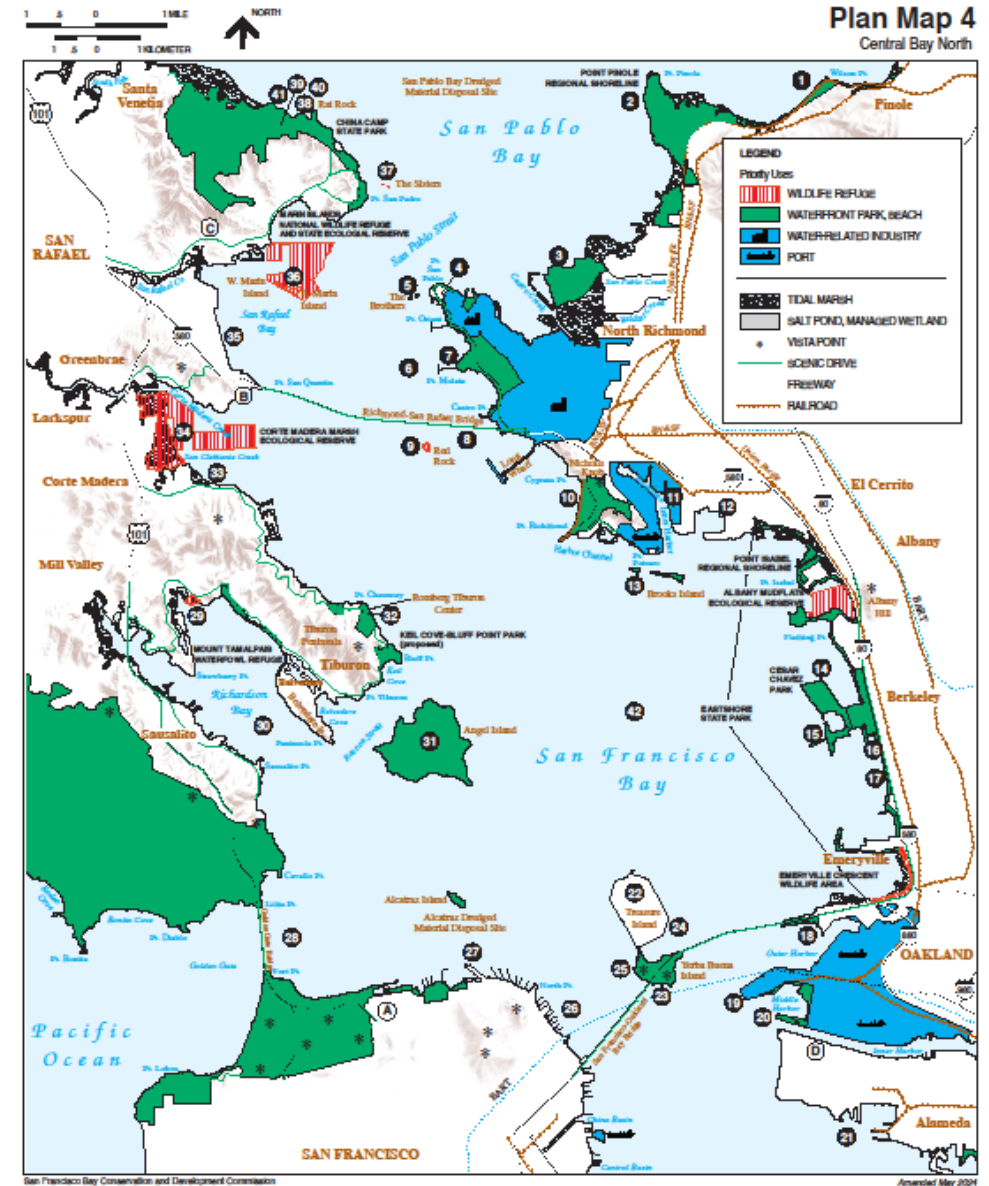
The Amendment **WOULD NOT** modify any substantive policy or any Priority Use Area Boundary.



Amended Map Example

# BACKGROUND ON BAY PLAN MAPS

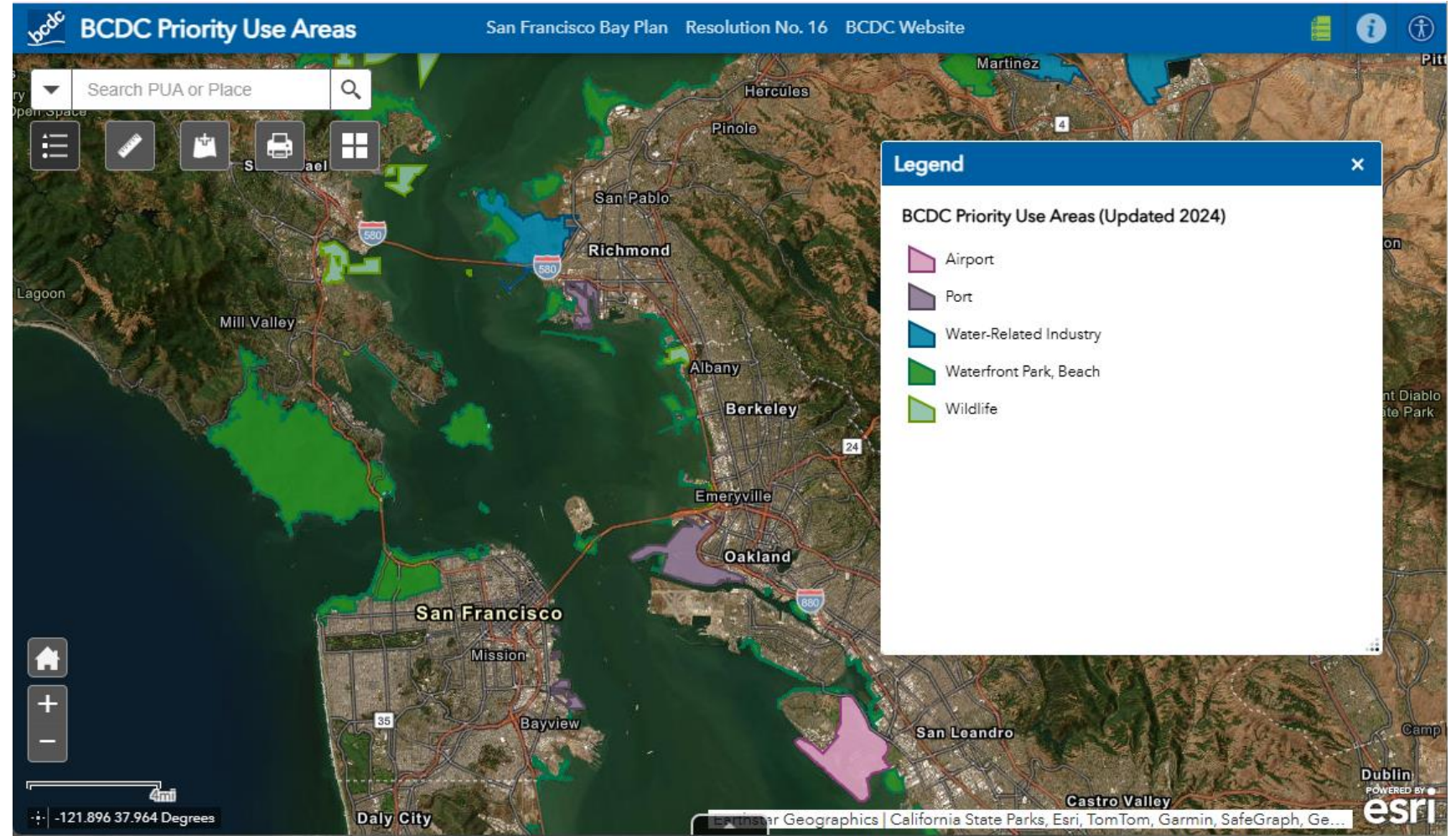
- There 7 total static Bay Plan maps
- Guide where BCDC policies *may* apply
- Show Priority Use Areas (PUAs): Airport, Port, Water-Related Industry, Waterfront Park, Beach, and Wildlife
  - Boundaries described in Resolution 16
- Geographic-specific Bay Plan Map policies
- Advisory notes and suggestions.
- PUA boundaries updated regularly through BPAs





# THIS IS THE LATEST IN A SERIES OF MAPPING IMPROVEMENTS BY BCDC

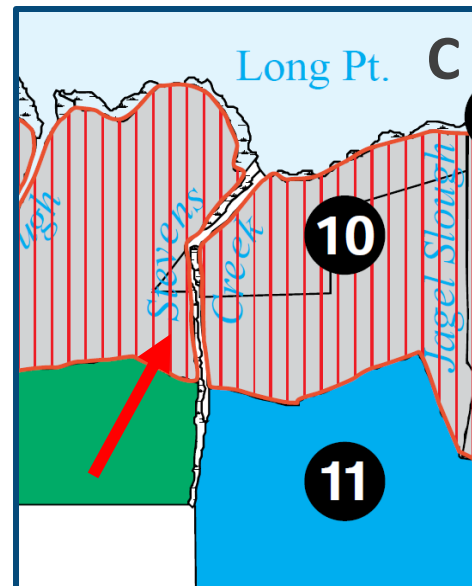
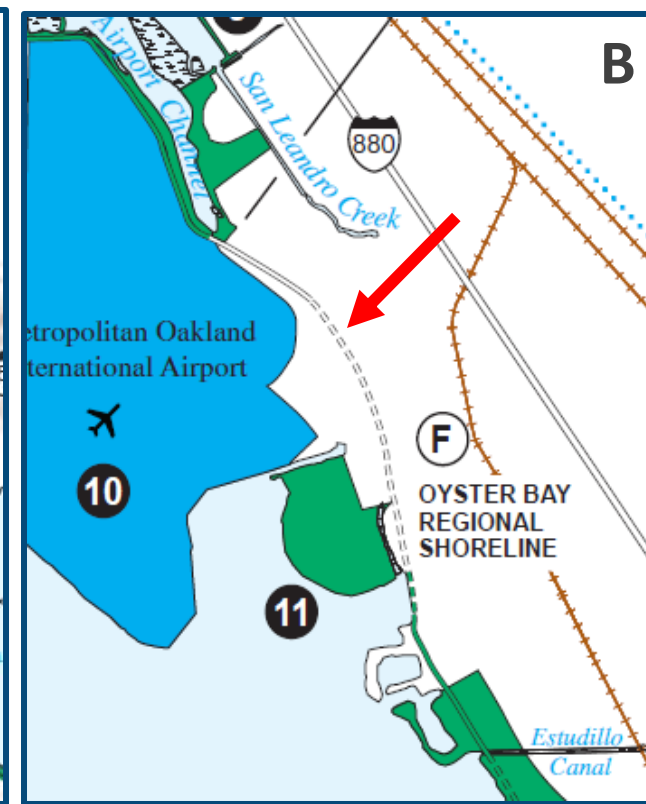
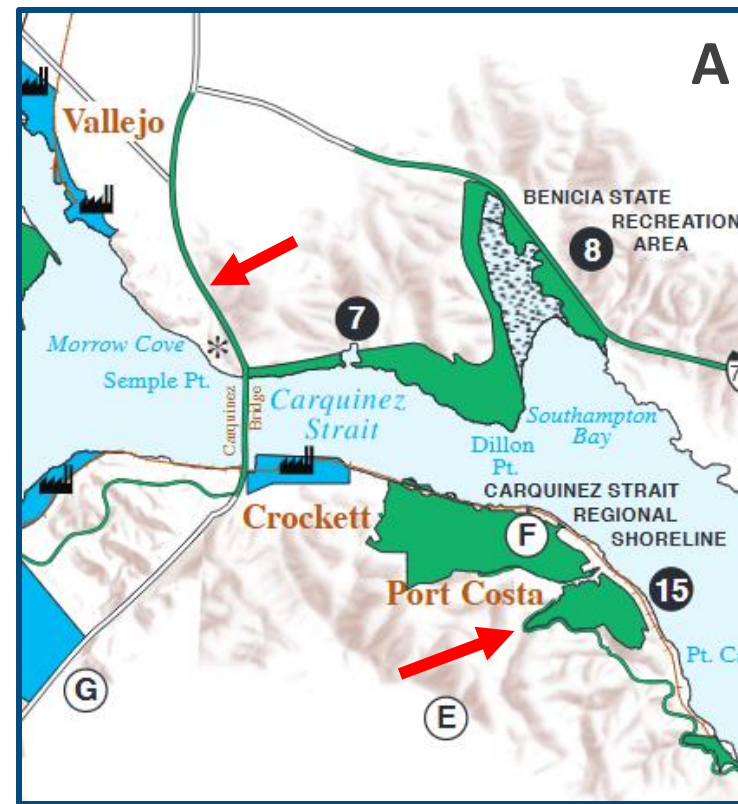
- The Commission updated Resolution 16 in 2023
- BCDC staff reviewed and digitized PUA boundaries in GIS
- BCDC launched interactive PUA mapping application in 2023
- Increased transparency about BCDC laws and policies



[Priority Use Area Web Mapping Application](#)

# EXISTING ISSUES

- Unclear, inaccessible symbology
- Outdated data sources
- Illegible, incomplete labels
- Inaccurate jurisdictional information
- Difficulty updating maps

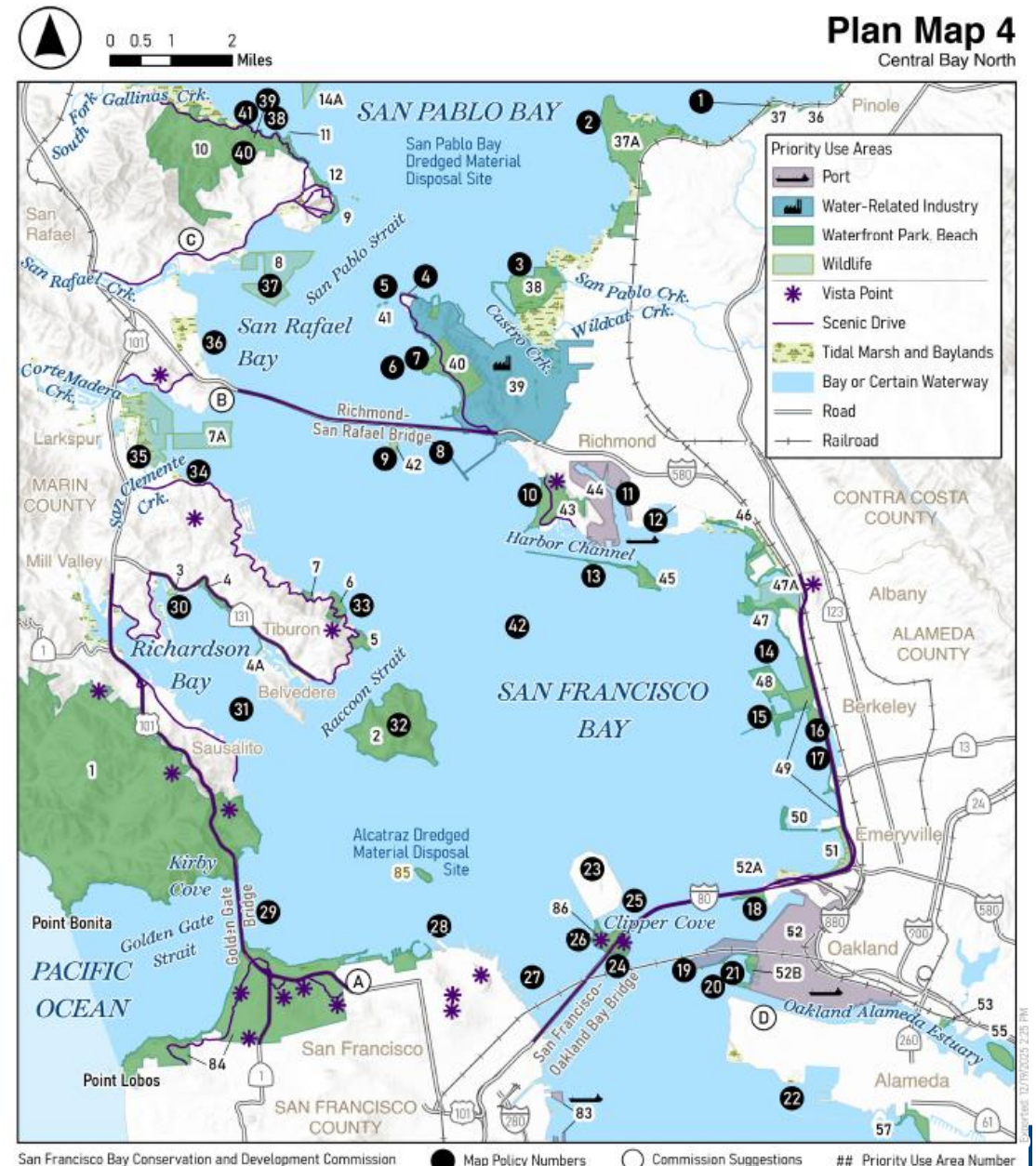




# OVERVIEW OF UPDATES

- **Accuracy**
  - Data sources
  - Updated Jurisdictional information
  - PUA boundaries consistent with Resolution 16
- **Legibility and Clarity.**
  - Symbology
  - PUA labels
  - Font size
- **Accessibility**
  - ADA best practices (color contrast and readability)

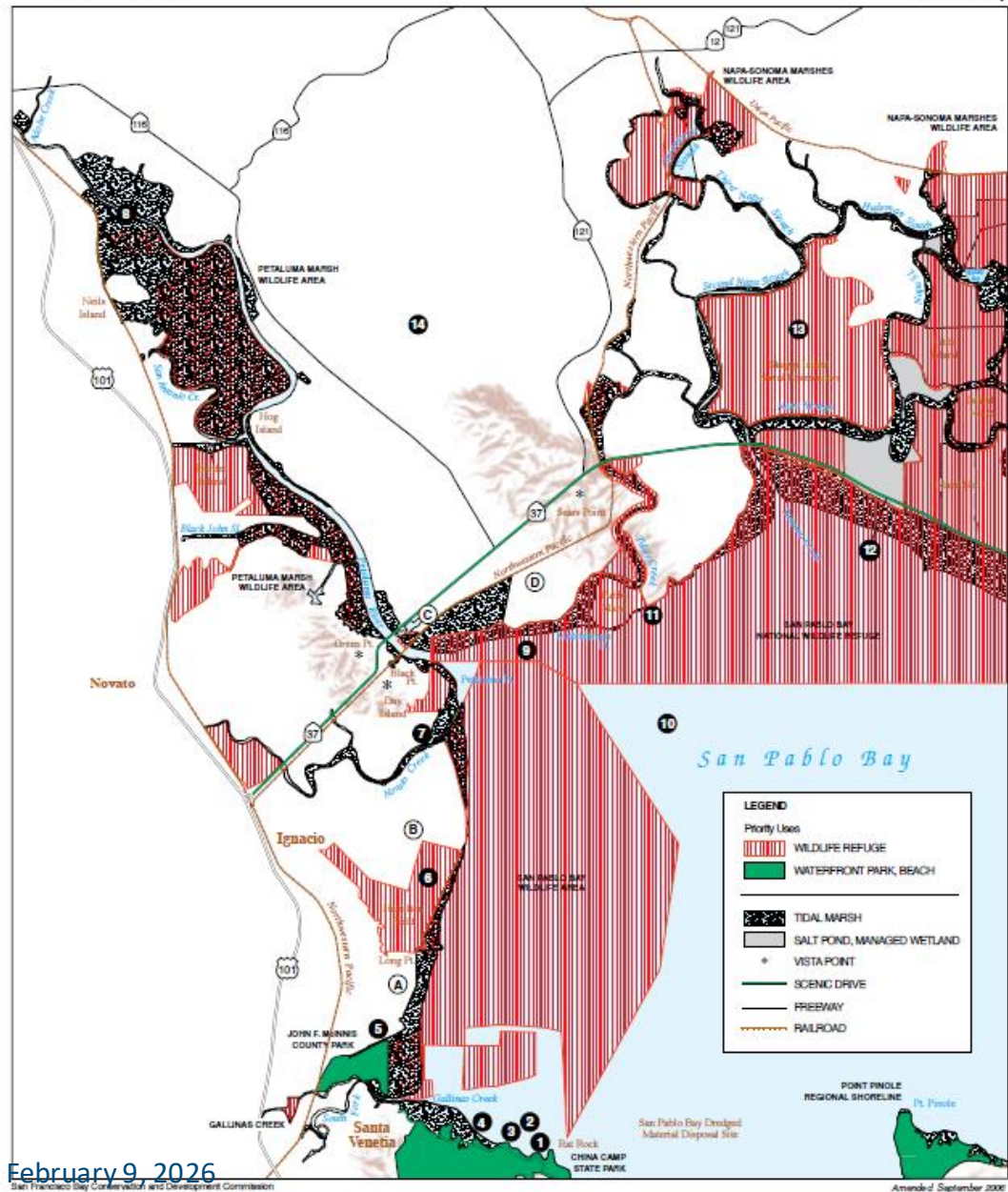
**There are NO changes to policy or Priority Use Areas.**





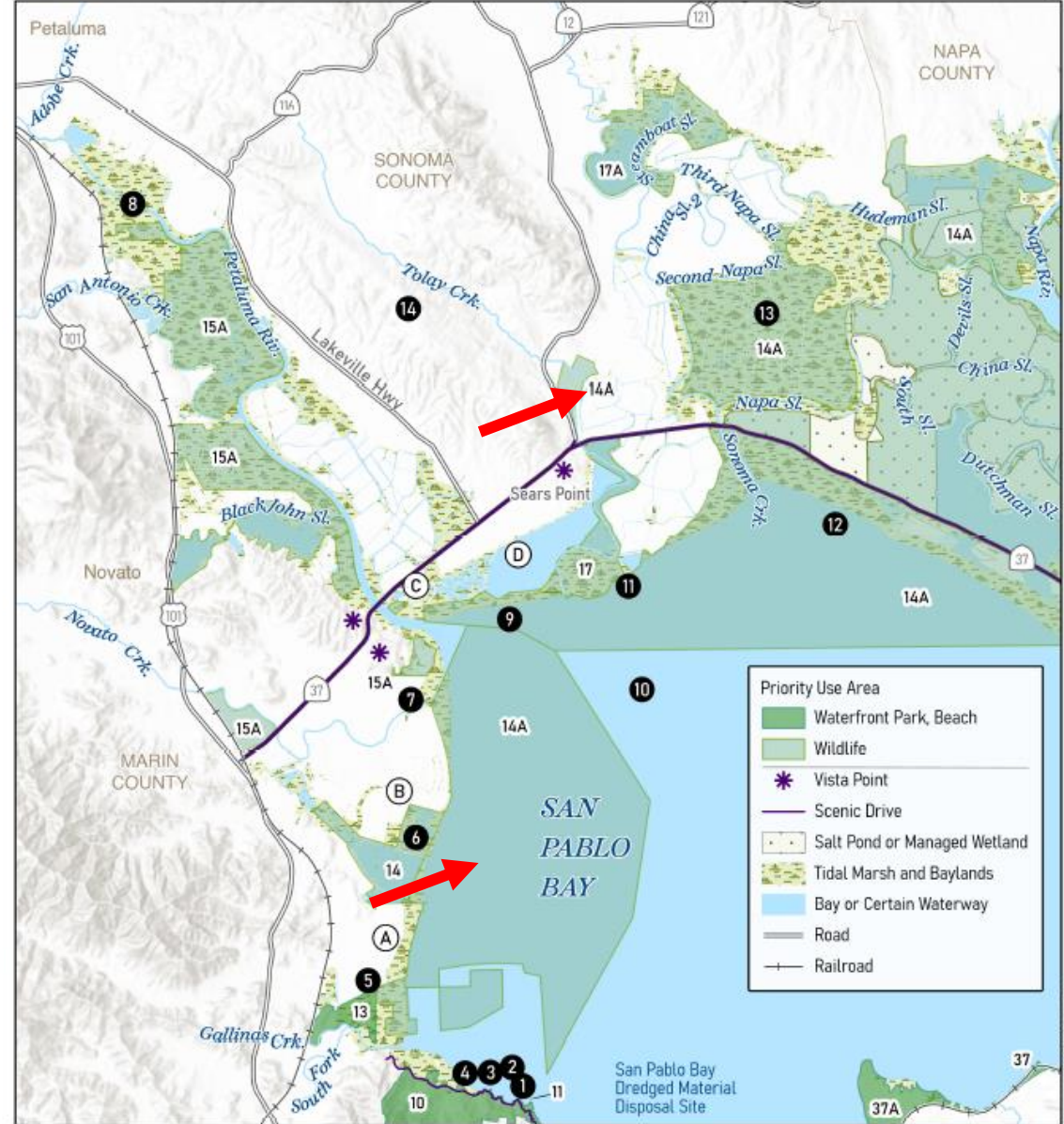
# MAP 1 COMPARISON

1 0.5 1 MILE  
1 0.5 1 KILOMETER  
NORTH  
**EXISTING MAP** Plan Map 1  
San Pablo Bay



February 9, 2026  
San Francisco Bay Conservation and Development Commission

0 0.5 1 2 Miles  
**AMENDED MAP** Plan Map 1  
San Pablo Bay



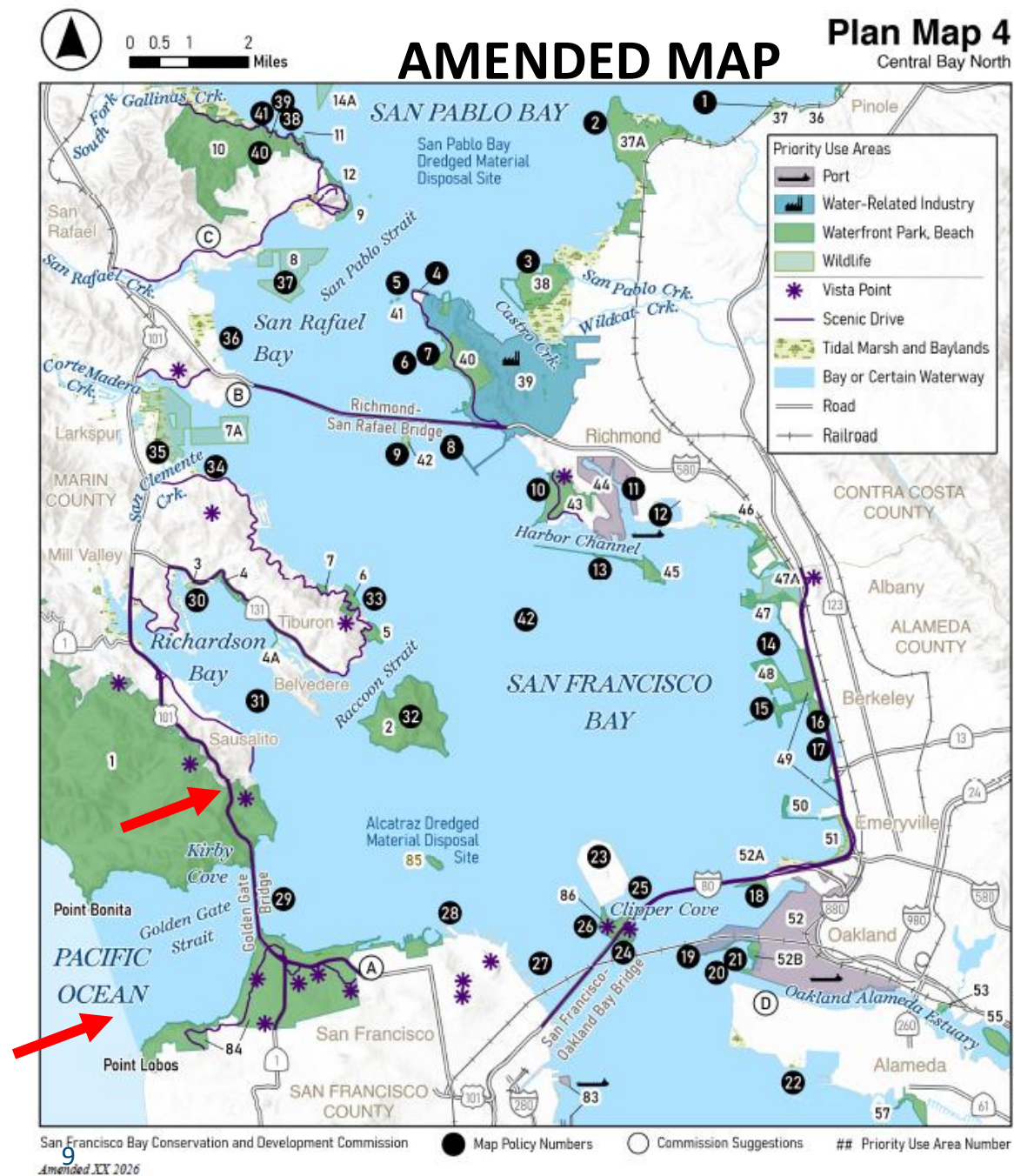
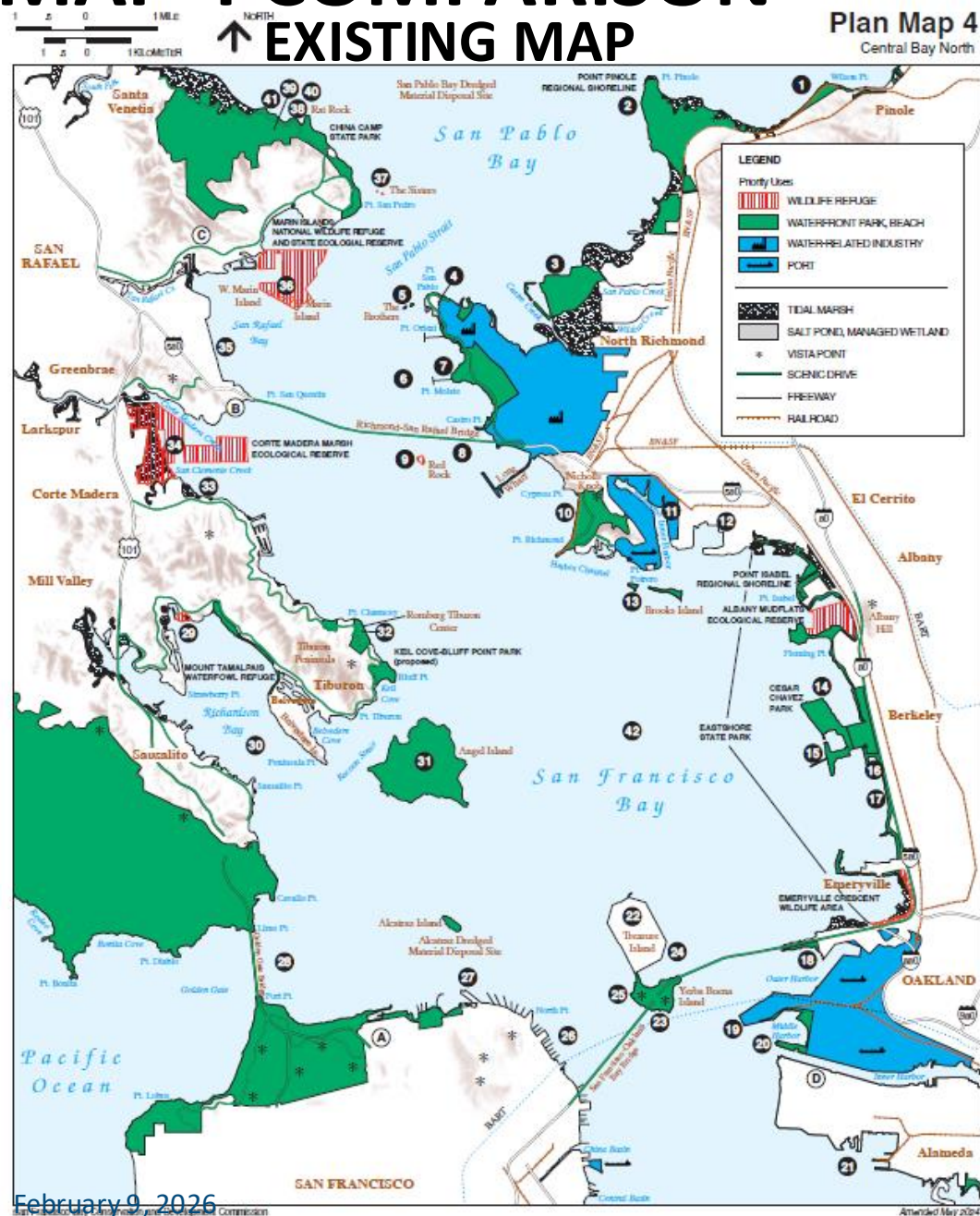
San Francisco Bay Conservation and Development Commission  
Amended XX 2026  
● Map Policy Numbers  
○ Commission Suggestions  
## Priority Use Area Number

Expirates 02/09/2026 13:22 AM



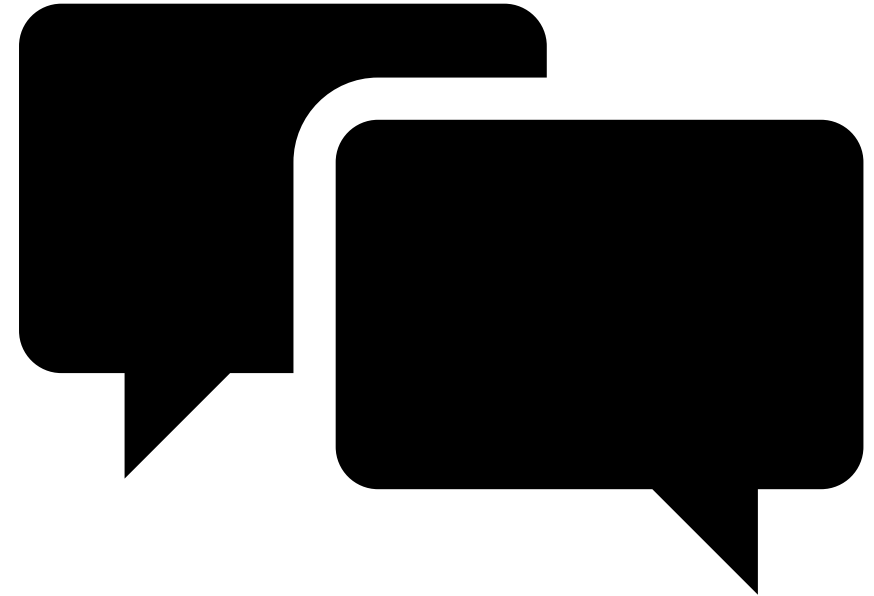


# MAP 4 COMPARISON

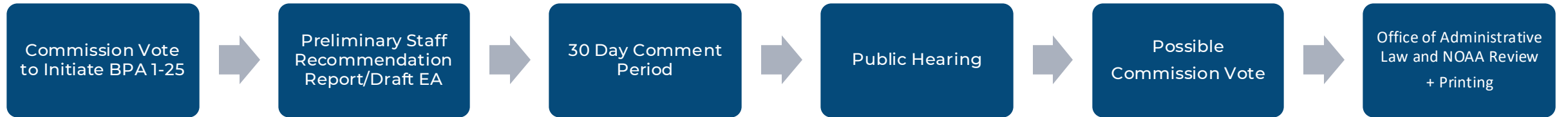


# COMMISSION COMMENTS

- Cartographic aesthetic appeal
- Alignment of symbology with interactive map
- Consider “inset” map for reference
- Use of best available data, including local data.



# TIMELINE



September 18, 2025

January 16, 2026

February 19, 2026

March/April

Summer/Fall 2026