

RESILIENTSR37

Near-term Sears Point to Mare Island Improvements



BCDC Commission Meeting May 15, 2025

Corridor Overview



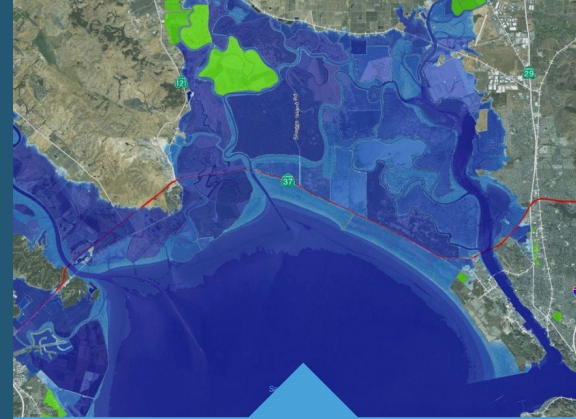
Quality of Life Challenges & Climate Imperatives



**Travel Time &
Transit**



Public Access



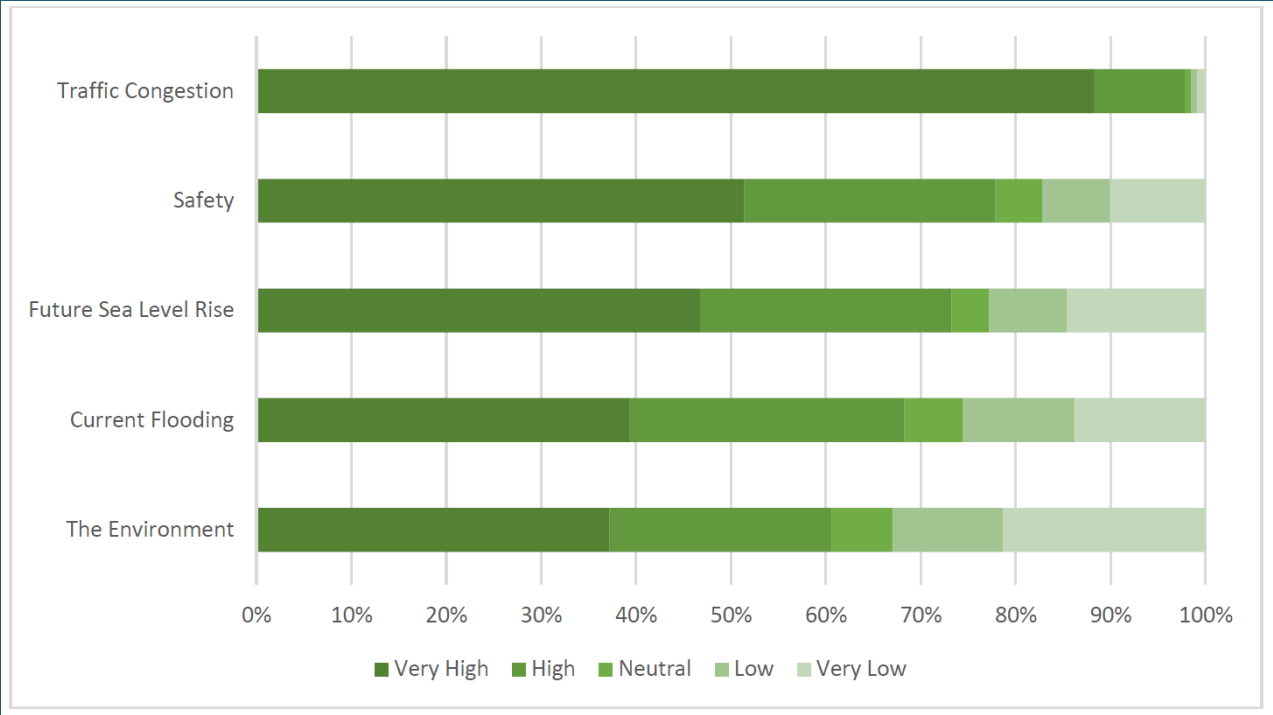
**Flooding/
Sea Level Rise**



**Ecological
Connectivity**

Equity

Community Engagement & Priorities: Traffic Congestion is the Top Concern



Ranked Level of Concern- 2017/2018 Survey Results

Resilient SR 37 Corridor – Phased Implementation

Concurrent Project Development.

Deliver Early Community Benefits.

Environmental - Design - Construction

Sears Point to Mare Island Improvement

- Equity
 - *Improve Travel Times and Reliability
 - *Support Transit and Rideshare
 - *Public Access
- Baylands Restoration
- Resilience

Early Benefits



Transition

SR 37 Sea Level Rise Adaptation (I-80 – US 101)

- Long Term Corridor Resilience (Planning and Environmental Linkages Study)
- Multiple Project Implementation (Flood Reduction Project – 101 to Atherton)
- Equity, Bike, Pedestrian, Transit, and Public Access
- Advance Mitigation

RESILIENTSR37



Today

2029

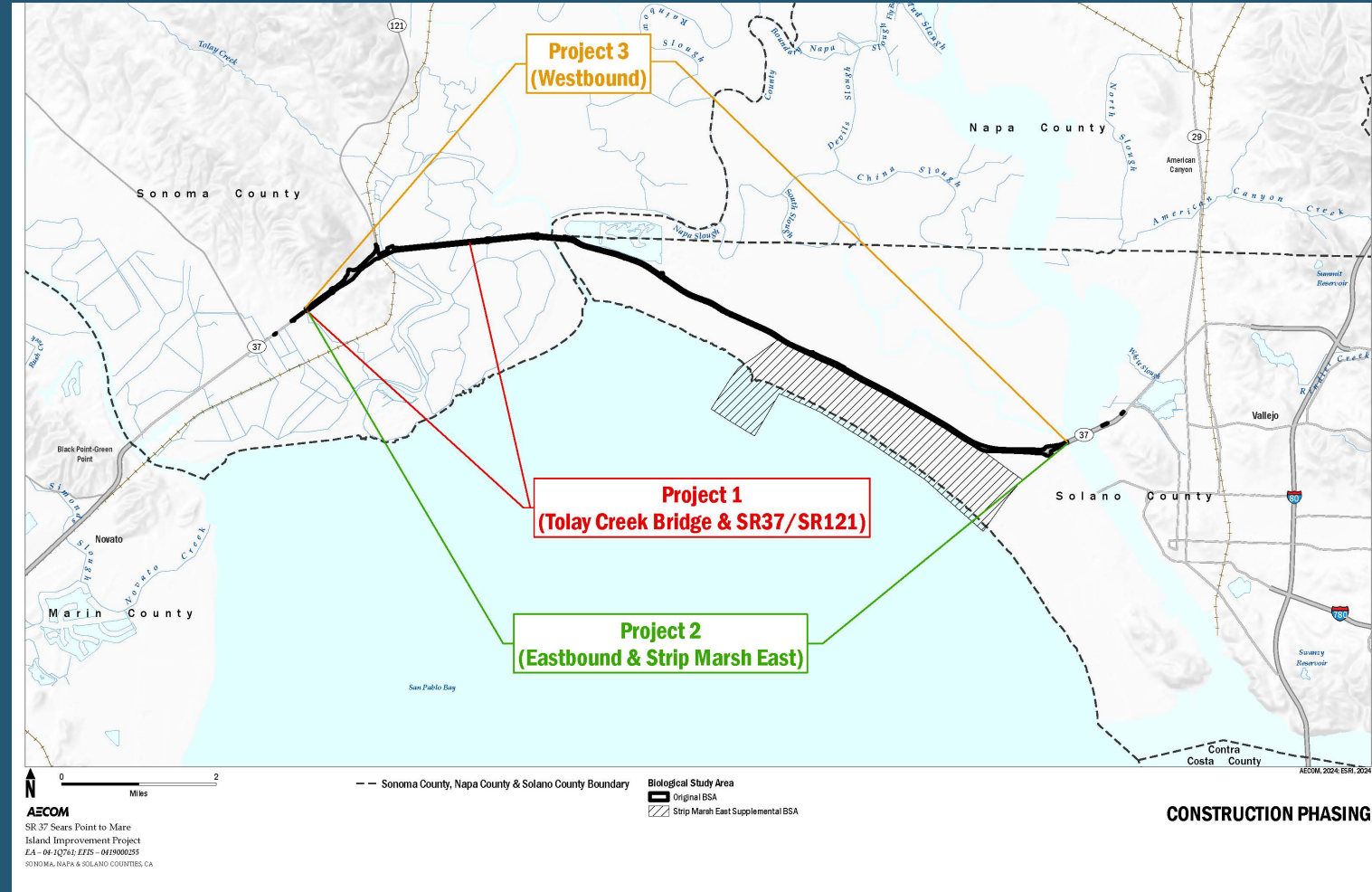
2040

2050

Near-Term Sears Point to Mare Island Improvements

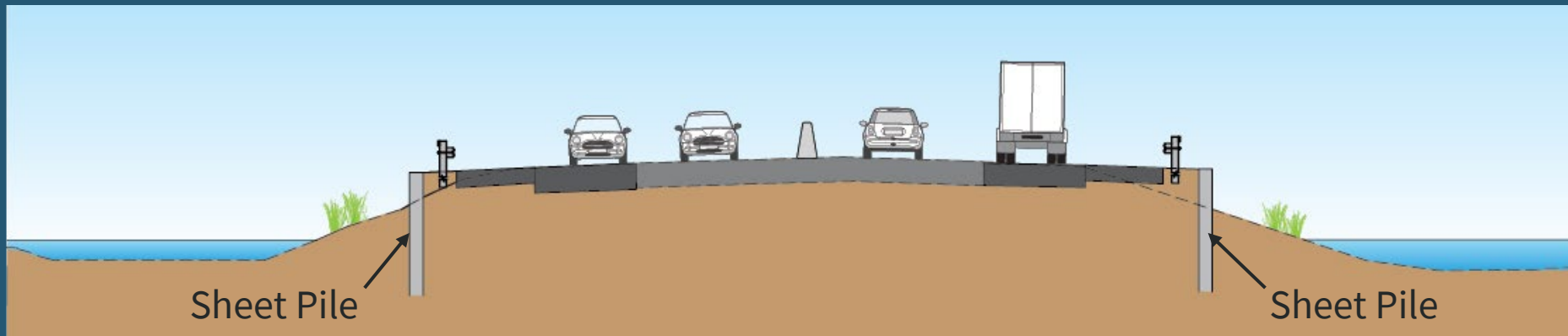
Overview:

- Project 1 - Tolay Creek Bridge Replacement & SR 121 Intersection Improvement
- Projects 2 & 3 East/Westbound Improvements-
 - New lane eliminates the lane drop
 - Transit & HOV lane
 - Tolling
- Roadway Resilience & Ecological Enhancements



Roadway Resilience: Addresses Recurring Subsidence

- Sheet Pile
- Side Slope Protection
- Raise Low-Elevation Spots

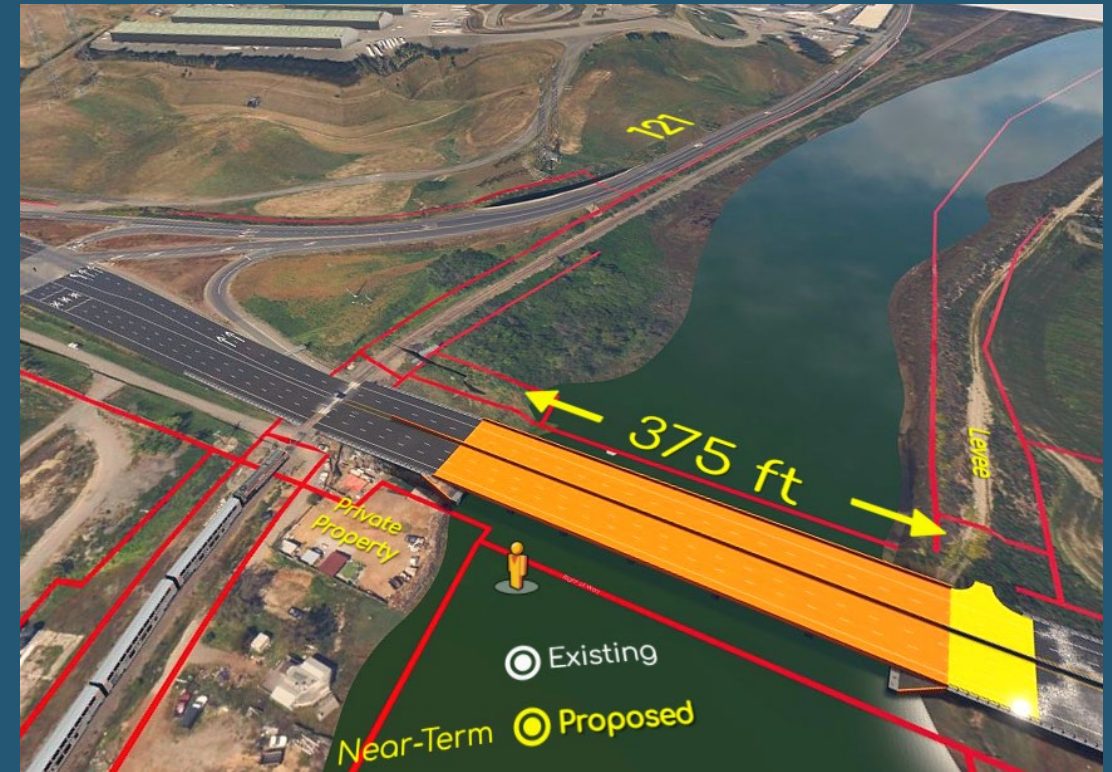


Tolay Creek Bridge Lengthening: Removes a hydrological bottleneck

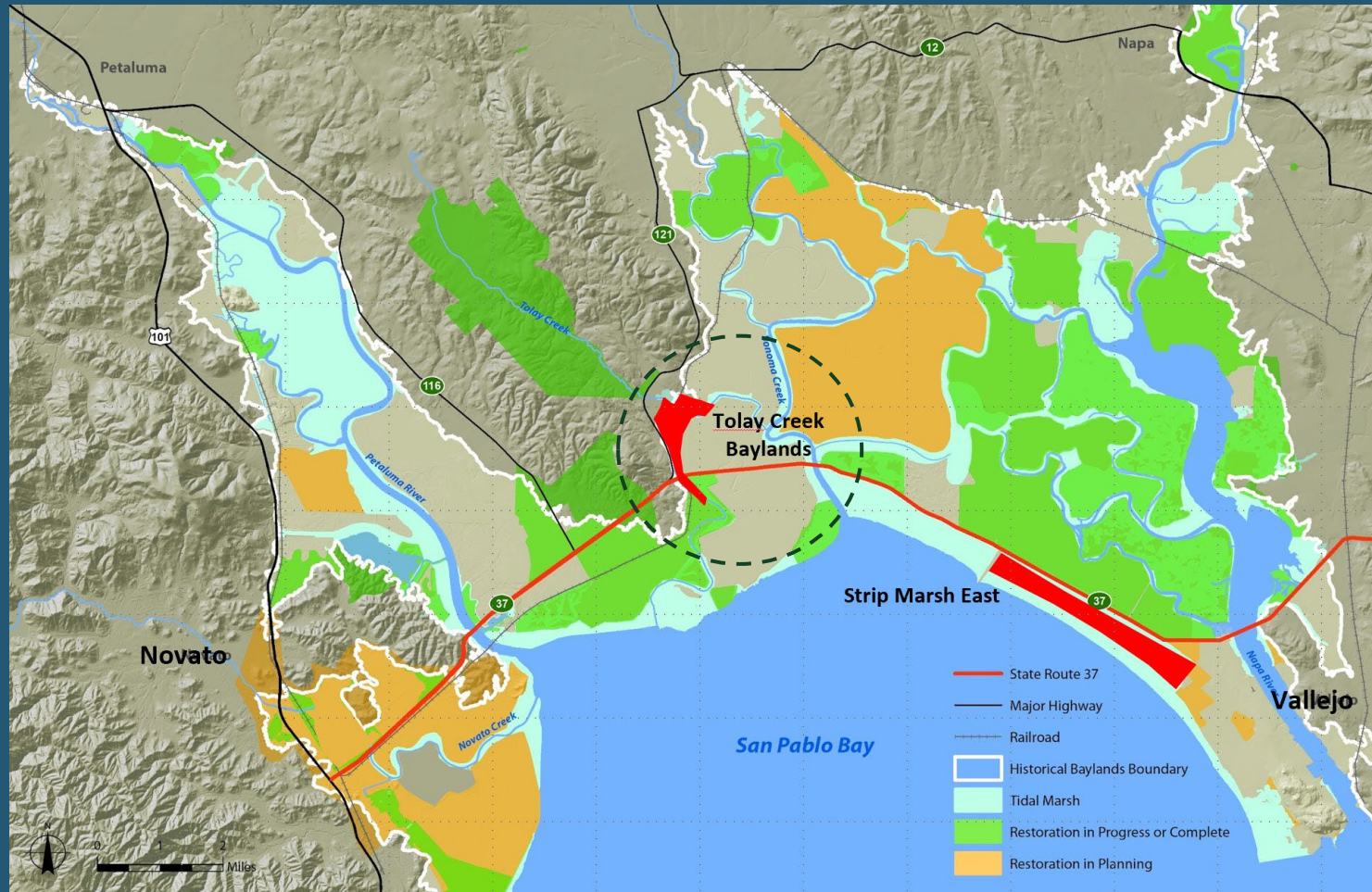
Existing



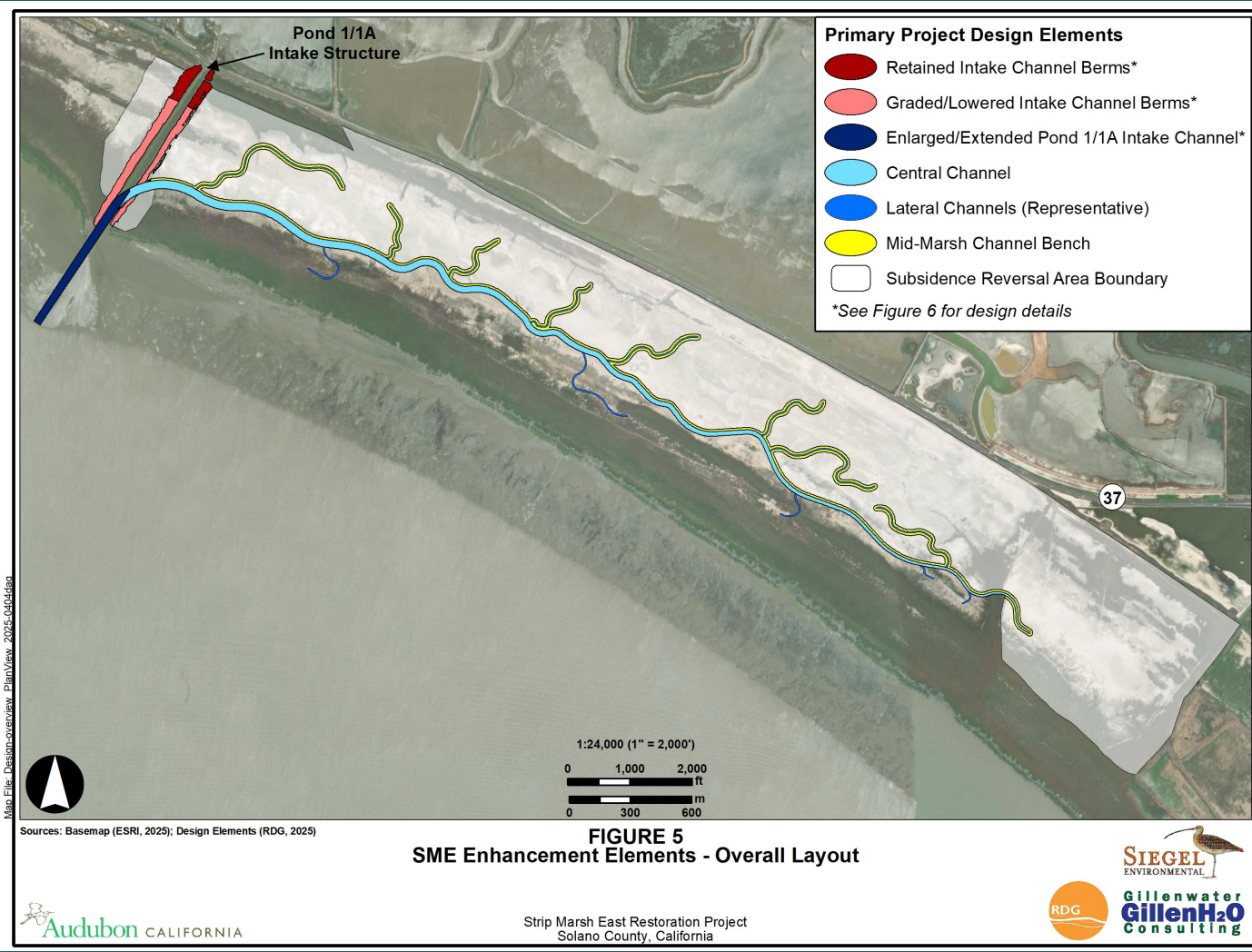
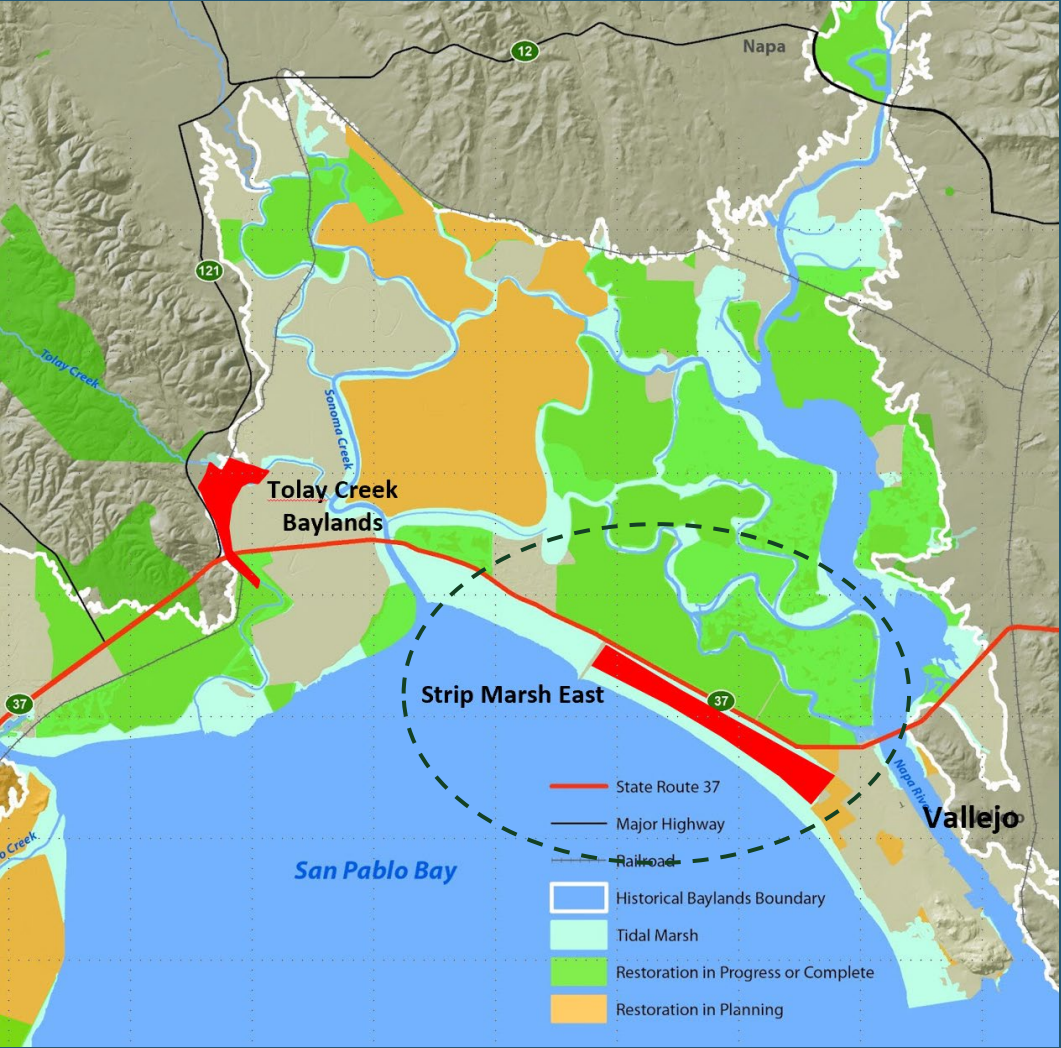
Near-term Project (~2030)



Increase Tolay Creek Capacity: Enhance Baylands Connectivity & Time-Sensitive Restoration



Strip Marsh East Ecological Enhancement: Nature-Based Solution to Storm Surge



Project Impacts Overview (Environmental)

Beneficial/On-site Minimization

- Strip Marsh East – New waters, enhanced habitat
- Tolay Creek Bridge Replacement – New waters, watershed improvement

Temporary Impacts

- Access
- Revegetation

Permanent Impacts

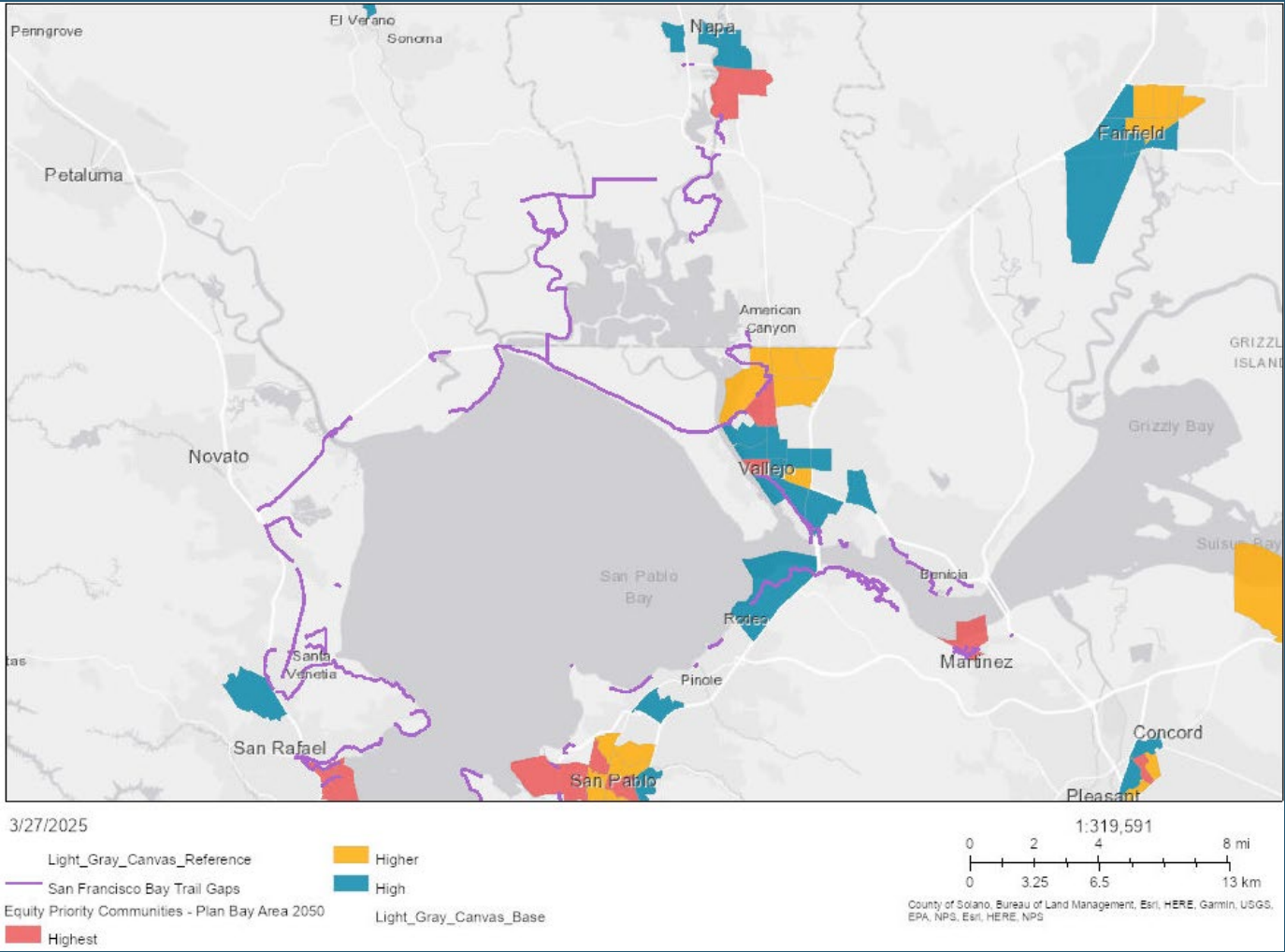
- Fill
- Habitat Loss
- Dredging

Offsite Mitigation

- California red legged frog
- Longfin Smelt
- Stormwater treatment



Proposed Public Access Improvements: Vallejo Waterfront



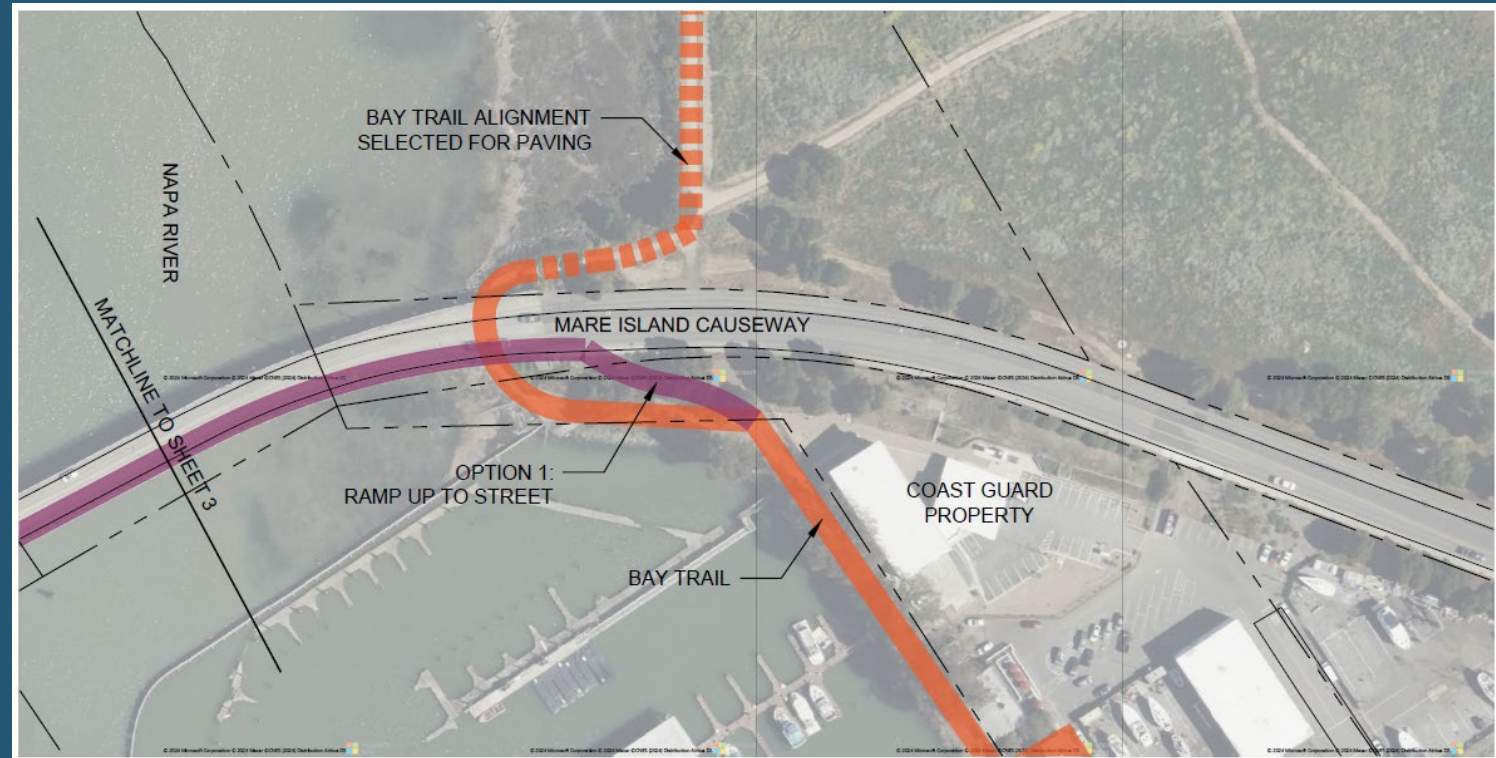
River Park Bike Path Improvements

- Convert gravel path to Class 1 multi-use path
- Add mile markers and amenities such as wayfinding and benches



Bike Access to Mare Island Causeway

- Build Class 1 multi-use path to connect existing Bay Trail to south of the Causeway
- Add retaining wall and fall protection



Curtola Parkway Bike Access

- Construct multi-use path to replace existing sidewalk
- Install landscape to separate from travel way
- Perform curb ramp adjustment and minor utility work

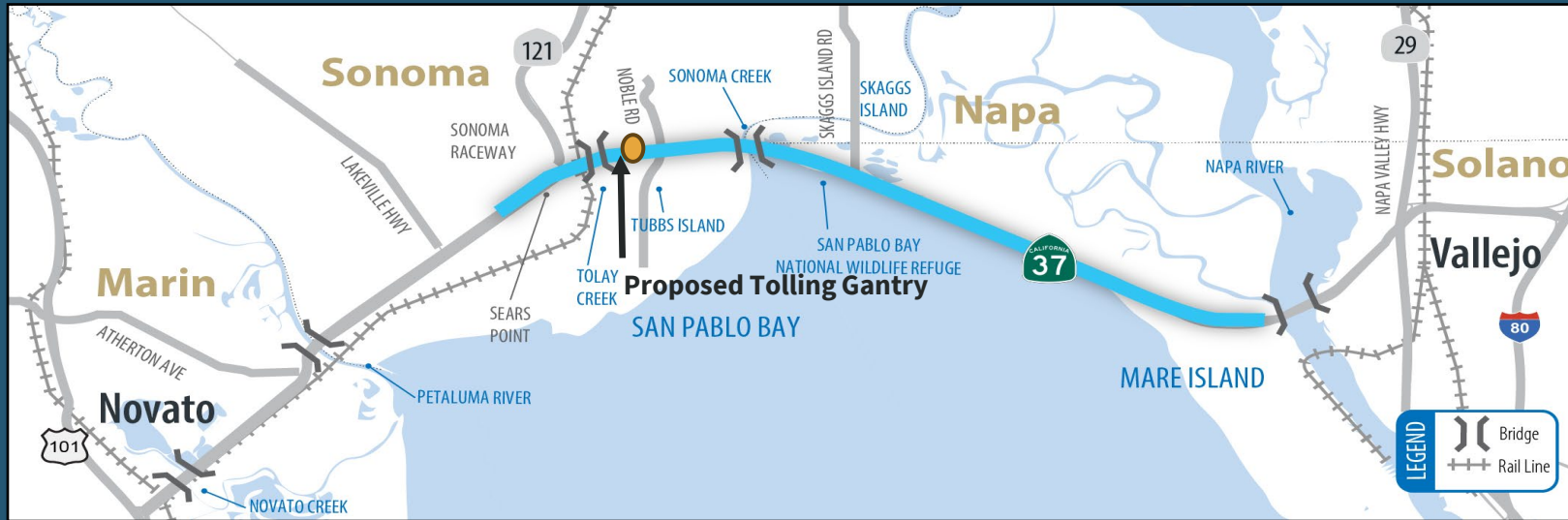


Tolling – Why?

- **State mandate to reduce vehicle miles travelled**
 - Can't just add a general purpose lane
 - Tolls keep vehicle miles travelled (VMT) lower
 - Prioritizes carpools, transit
- Tolls help fund improvements
 - Local match for this & future projects
- Tolls reduce post-project congestion
 - Limits future congestion
 - Saves you time



Tolling – How does it work? What does it pay for?



How much?

- Bay Area stated-owned tolled bridges

Where will tolls be collected?

- East of SR 121- Where new improvements will be made
- Future toll locations, west of SR 121, to be determined and delivered as part of long-term improvements

Toll money will:

- Help fund and maintain the project
- Support transit and vanpools
- Build momentum toward long-term improvements

Toll Discount Program

- In development
- Will seek feedback from the community



Building from Existing MTC Pilot Programs

Upcoming Public Outreach & Engagement

- **Goals**
 - Develop strong connection and communications
 - Build understanding of travelers' priorities
- **Types of Outreach & Engagement**
 - Community based organizations
 - General public – Meetings and events
 - Social media/conventional press
- **Timing**
 - Focus series in 2025- Summer, Fall, Winter
 - Additional meetings through opening (2029)

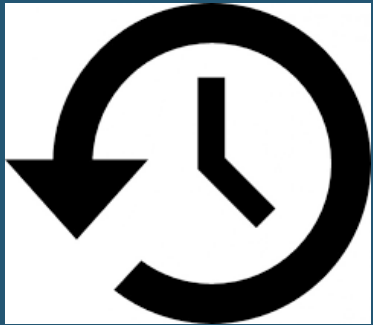


Benefits Outweigh the Cost



Reduce Congested Travel Times

- Eastbound PM: from 100 minutes to 26 minutes
- Westbound AM: from 60 minutes to 30 minutes



User Benefits from Delay Time Saved

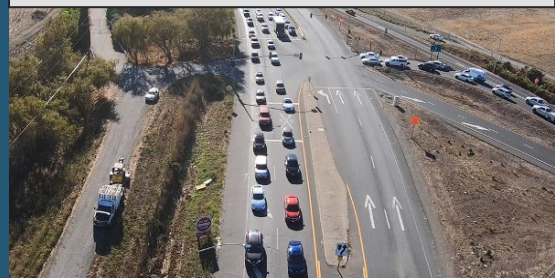
- Opening Year (2029): \$79M in Time Savings
- 9.6 million person hours of saved time Annually
- \$1.5B in life cycle benefits

Near-term Improvements- Advancing Community Priorities

Construction to Begin 2026 (Planned)



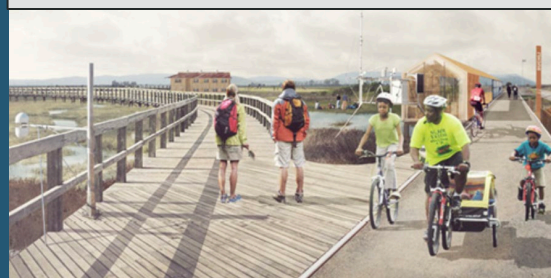
Travel Times & Reliability



Transit & Carpools



Public Access, Ecology, & Resilience



Economic Development



Housing



Discussion

