



INDIA BASIN SHORELINE PARK

BAY CONSERVATION AND DEVELOPMENT COMMISSION

Prepared for San Francisco Recreation and Parks and The Trust for Public Land
by GGN with Jensen Architects, Sherwood Design Engineers, Rana Creek, Moffatt & Nichol, Jon Brody Structural
Engineers, Interface Engineering, Niteo Lighting, and Boudreau Associates

For Review on May 15th, 2025 by the San Francisco Bay Conservation and Development Commission



Project Location



Waterfront Properties



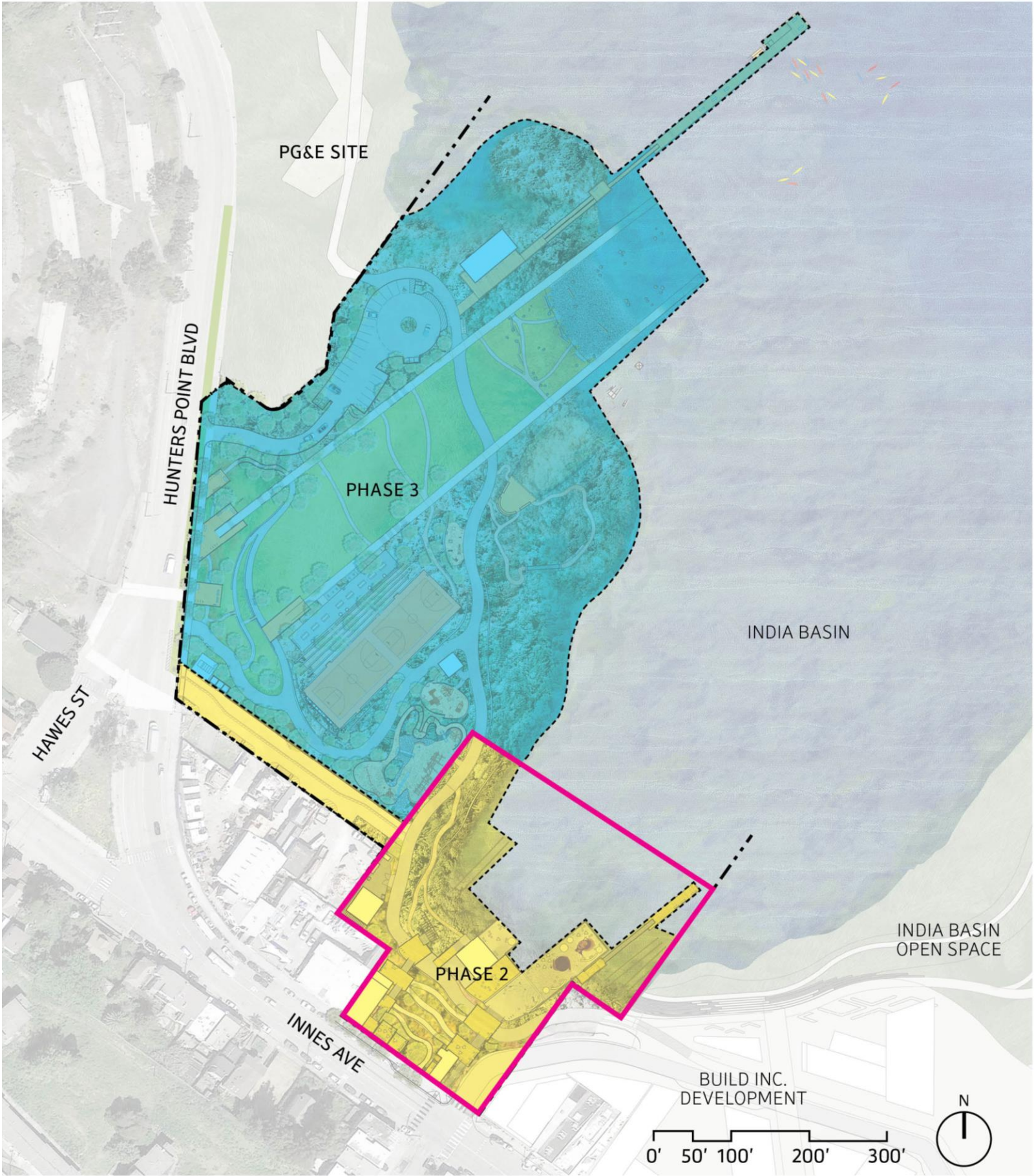
Maintained by SF Recreation and Parks

- 900 Innes/Boatyard Park
- India Basin Shoreline Park
- India Basin Open Space
- Big Green

Maintained by others

- Heron's Head Park (Port of San Francisco)
- Hunters Point Shoreline (PG&E)
- Big Green (BUILD Inc.)

India Basin Waterfront Park



- Phase 1: Remediation Phase (March 2021 - Aug 2022)
- Phase 2: 900 Innes (Sept 2022 – Oct 2024)
- Phase 3: India Basin Shoreline Park (Summer 2025-2027)







Equitable Development Plan Goals

- Support the development of the India Basin Waterfront Parks designed in partnership with the Bayview-Hunters Point community
- Stimulate local hiring through job training for construction activities, park-related concession opportunities, and recreation leadership positions.
- Create opportunities to address issues of social and environmental justice, equity, and inclusion within the Bayview Hunter's Point communities.
- Construct more usable open space to address the population growth in a high-need and emerging neighborhood and improve recreational amenities to existing residents.



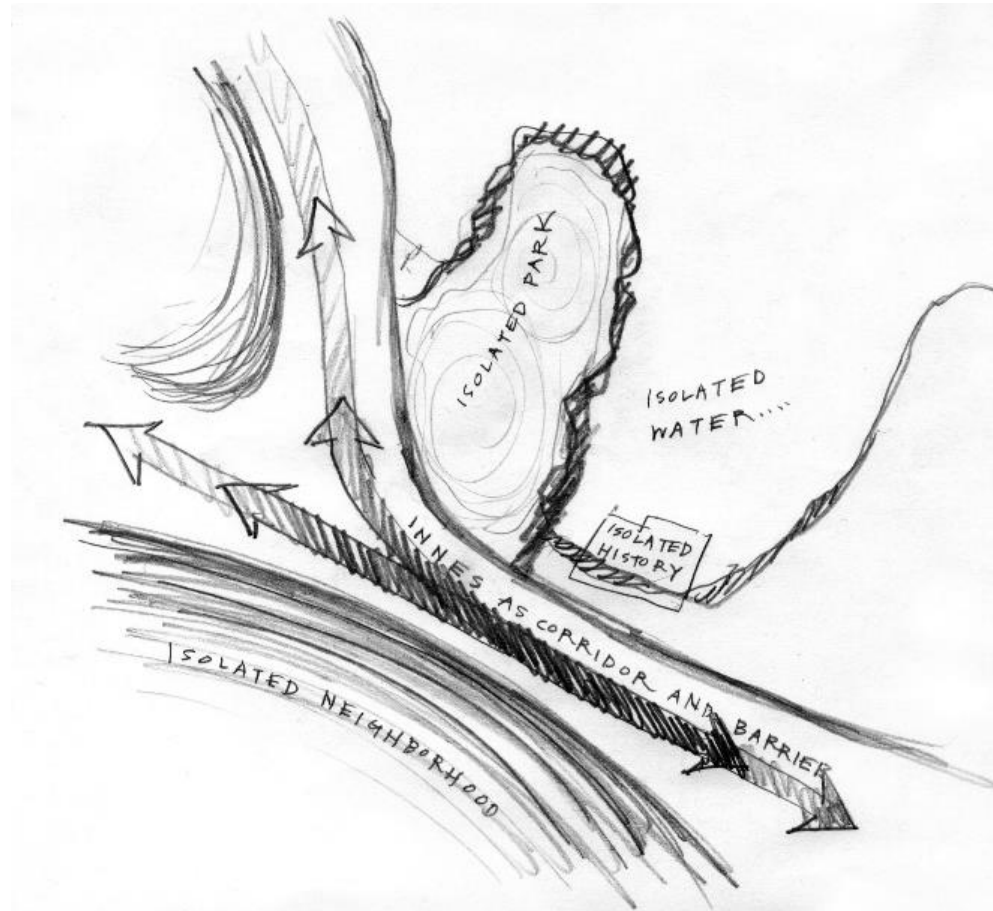
On-site Engagement



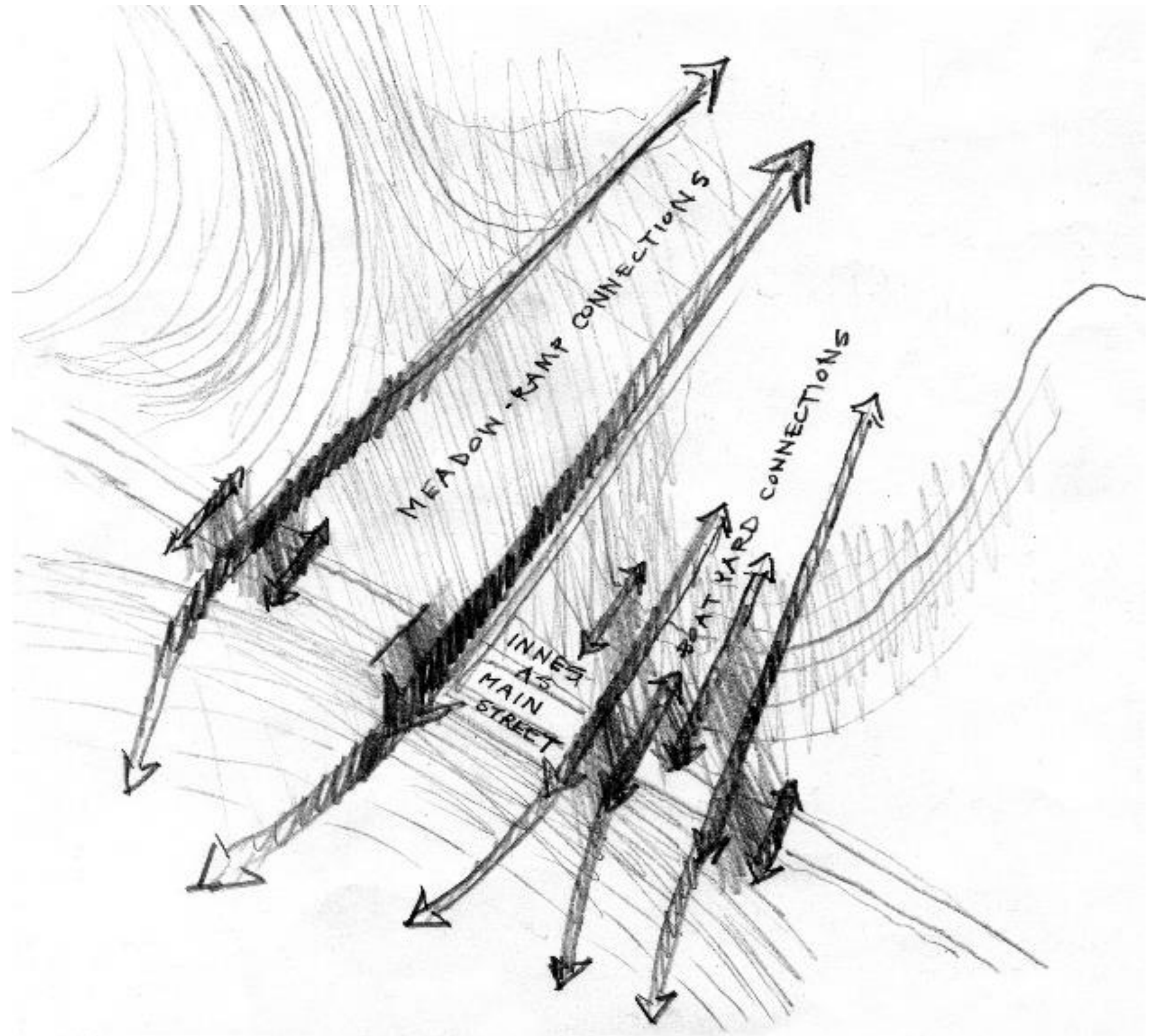
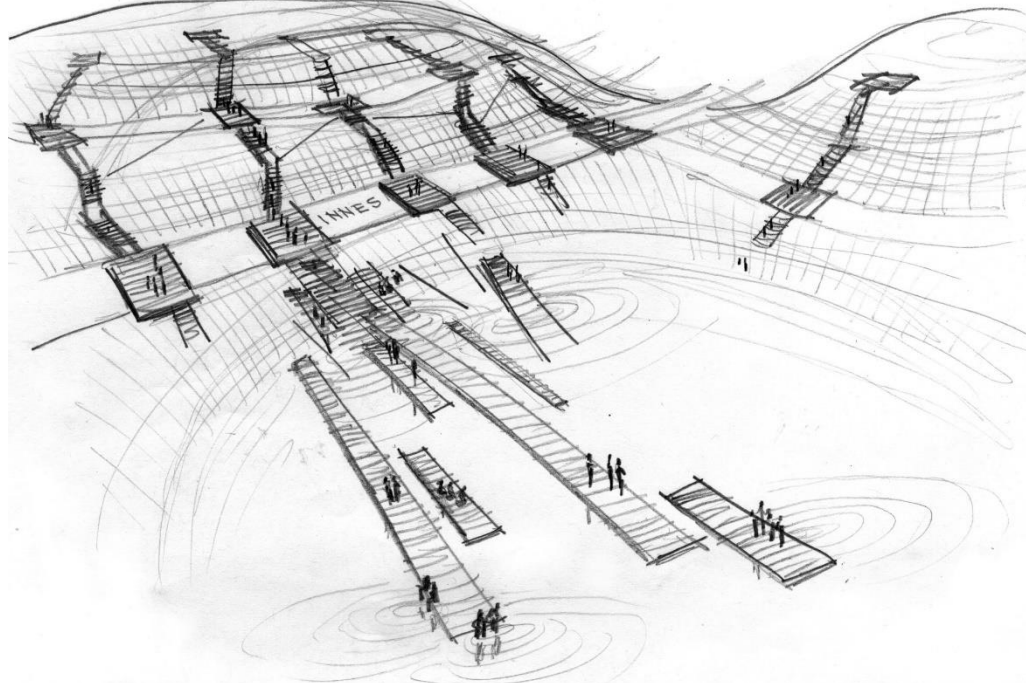
Sample Board



Design Goal: Prioritize Access & Connection



INTRODUCE A WALKABLE CROSS-GRAIN
... slowing through-traffic with texture
... emphasizing the human scale over the corridor



Project Objectives

Neighborhood and Community

- Meaningful and inclusive local, citywide, and regional community engagement
- Seamless park user experience along India Basin with waterfront and recreation access and significant amenity on Bayview/Hunters Point recreation loop/waterfront
- Open space addressing population growth in high-need, emerging neighborhood with improved recreational amenities to existing residents and park users
- Address social and environmental justice, equity, and inclusion in parks and open space for India Basin and greater Bayview Hunters Point communities
- Local hiring via job training for construction activities, park-related concession opportunities, and recreation leadership positions
- Safe environment for park users with increased visibility (e.g., direct sightlines from bordering streets to water)

Environment and Sustainability

- Landscape that will be adaptive and resilient alongside anticipated sea level rise
- Conserve and strengthen natural resources and increase biodiversity and interconnectivity on City parkland via expansion of shoreline wetlands and redevelopment of natural upland landscaping
- On-site stormwater treatment infrastructure to promote improved Bay water quality

History and Cultural

- Preserve and celebrate historical and cultural resources, including the interpretation of the ship hulls at IBSP
- Honor and recognize the Bayview African American Arts and Culture District through programming, artwork, and cultural interpretation
- Entry from Hunter's Point Boulevard highlights cultural and natural landscape, maintains sightlines to waterfront, and contributes to a seamless park user experience and sense of place

Recreation and Education

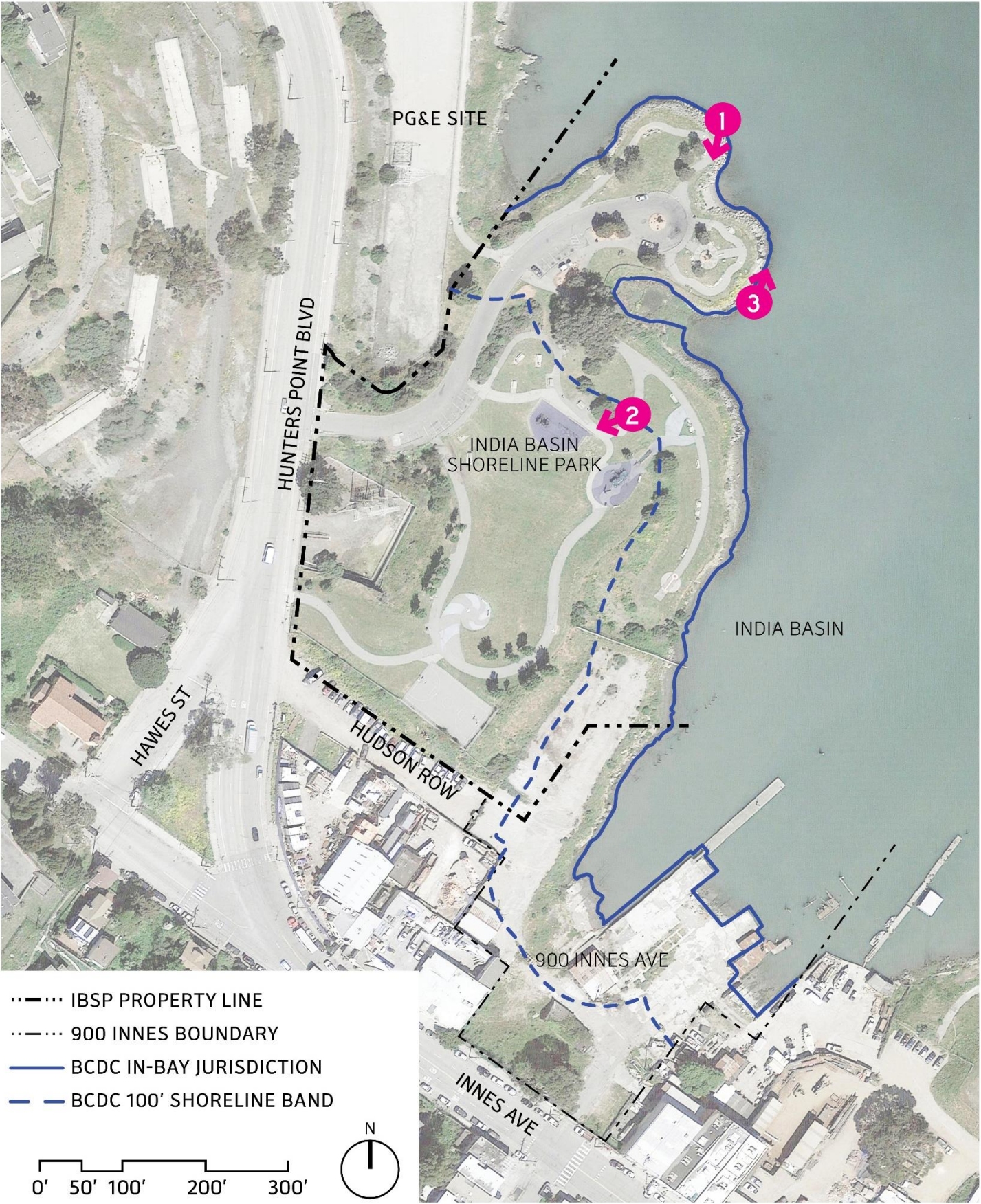
- Expand access to Bay and accelerate development of Blue Greenway/Bay Trail by connecting IBSP to the 900 Innes site, India Basin Open Space, and the seven properties along India Basin cove
- Active recreation programming (e.g., human-powered boating center, basketball courts, adult fitness equipment, bike paths, children's playground, and public beach access)
- Passive recreation programming (e.g., bird-watching, barbeque and picnic areas, landscaped and natural hiking paths, and great lawn)
- Park spaces designed to be safe and inviting that follow best practices for successful maintenance

Overall Project Goals

1. Uphold Community Priorities
2. Connect and Provide Access
3. Honor and Celebrate History
4. Create and Enhance Natural Habitat
5. Adapt to Sea Level Rise



Existing Site



Site Access



Pedestrian & Bike Access

- BUS STOP
- PARK ENTRY
- PRIMARY CIRCULATION
- SECONDARY CIRCULATION
- BAY TRAIL/BLUE GREENWAY
- SHARED BIKE/PED PATH
- BIKE LANE
- BIKE PARKING

Water Access

- WATER TRAIL

Vehicle Access

- VEHICLE ACCESS
- VEHICLE DROP OFF

- PARK BOUNDARY
- BCDC IN-BAY JURISDICTION
- BCDC 100' SHORELINE BAND

Site Program



Boathouse



Restroom Building



Bay City Ferry Deck



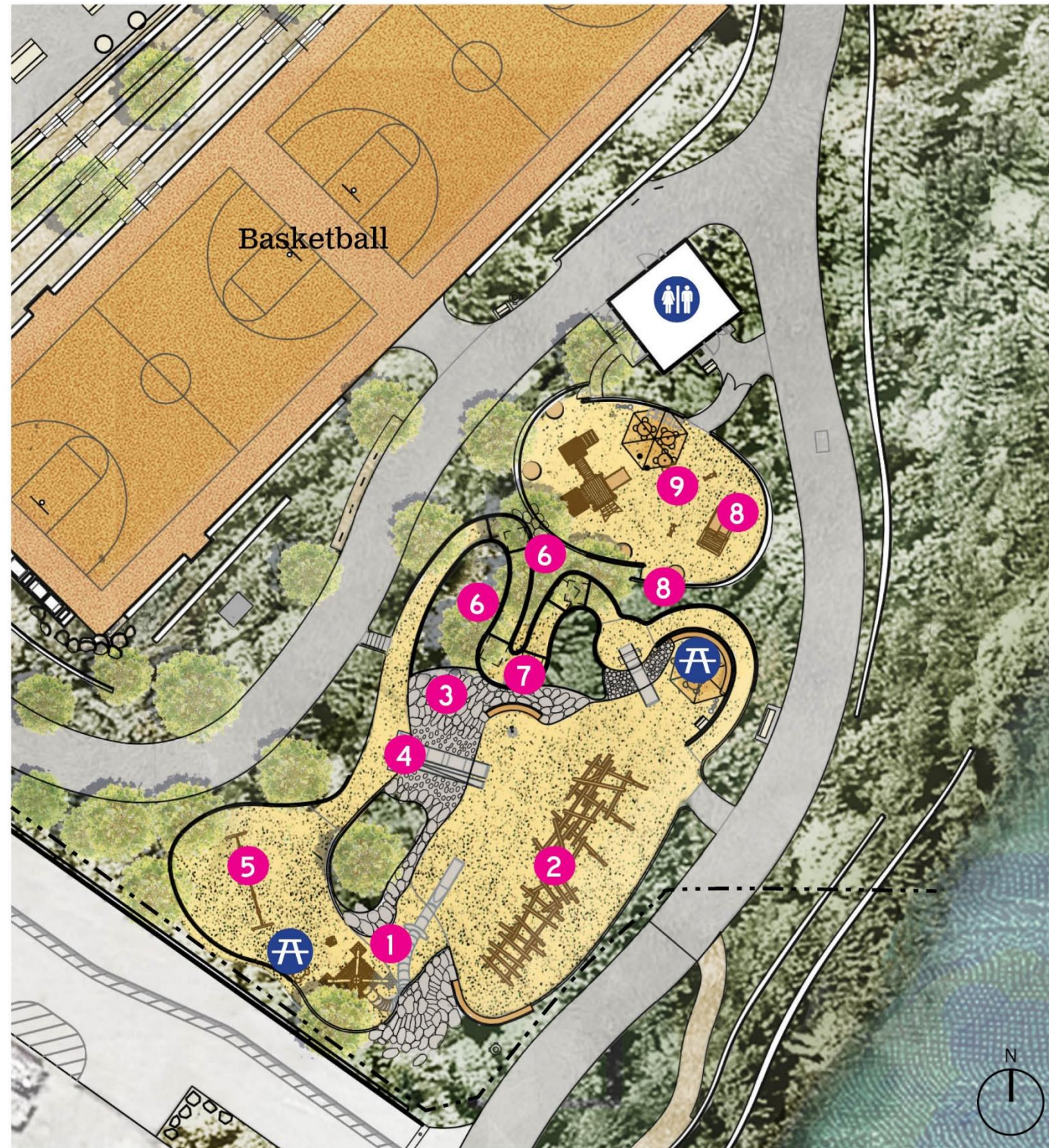
Welcome Decks, Lawn & Cookout Terrace

Main Entry, Lawn, and Cookout Terrace



Basketball and Playground

Natural materials, planting, and meandering pathways create a sense of discovery in the playground spaces. Swings at the top look out over the Bay.



1 Tower and Spiral Slide



2 Wood Climbing Structure



3 Boulder Scramble



4 Embankment Slide



5 Double Swing



6 Madrone Grove



7 Kaleidoscope

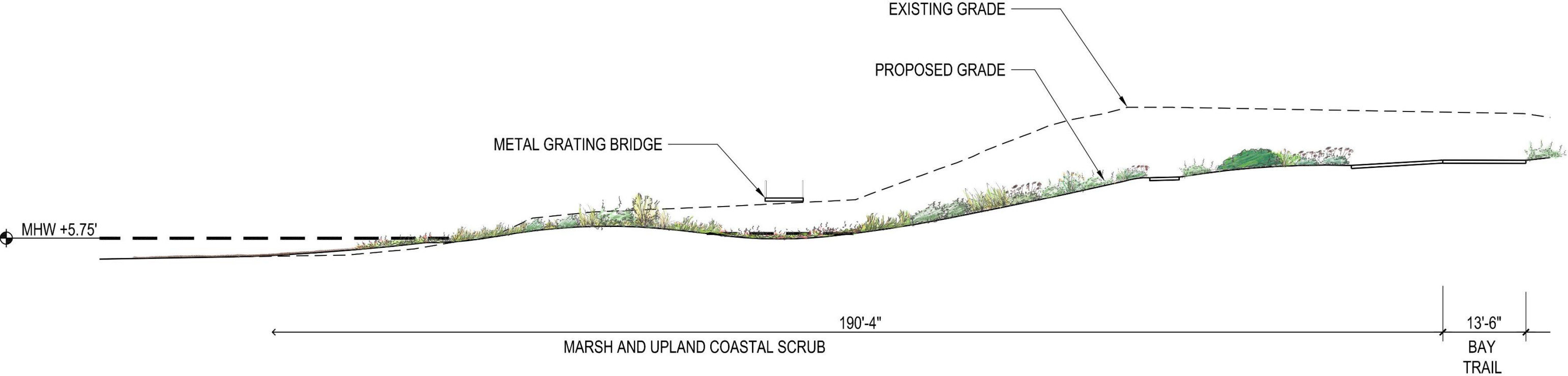


8 Wood Boat

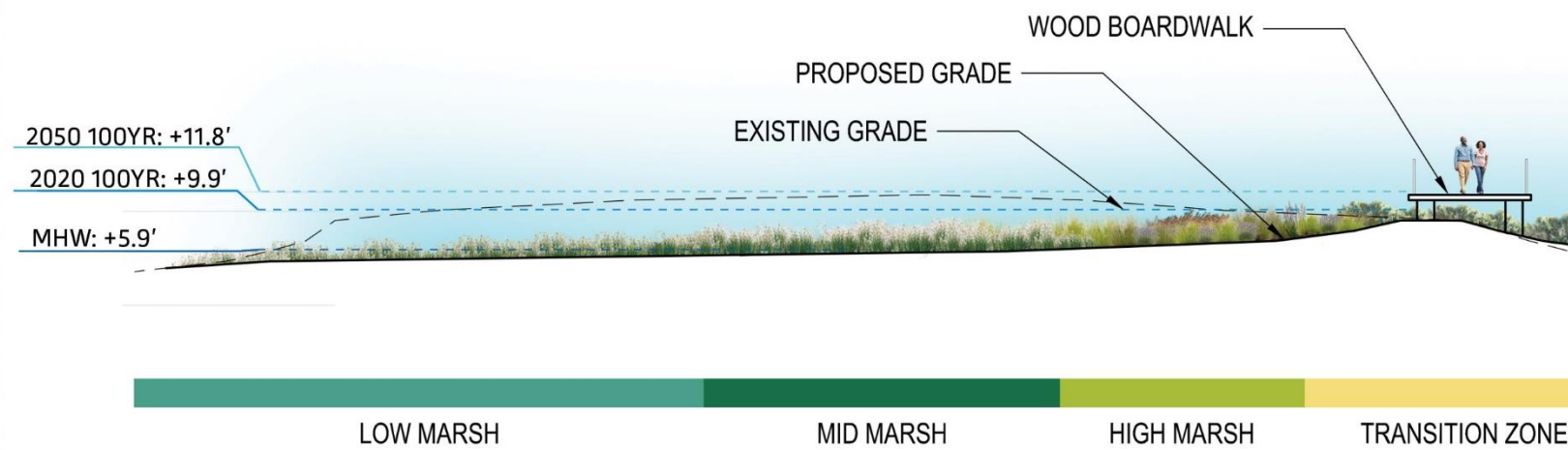
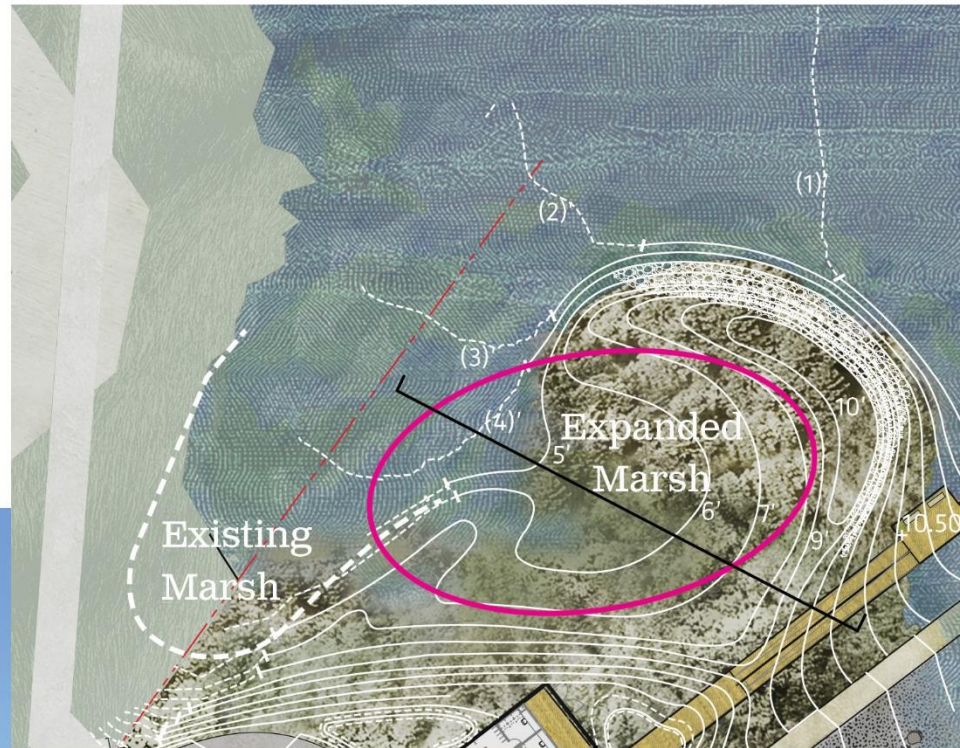


9 Animals

Marsh Inlet



Marsh Expansion



Gravel Shore



Inundation Extents

Tidal Datums with Sea Level Rise Projection OPC Medium-High Risk (NAVD88)

Time Period	SLR Projection	MHHW	King Tide	BFE
2020	0'	+5.9	+7.8	+9.9
2050	1.9'	+7.8	+9.7	+11.8
2070	3.5'	+9.4	+11.3	+13.4
2100	6.9'	+12.8	+14.7	+16.8

Inundation Extents – 2050



Inundation Extents – 2070



Inundation Extents - 2050

