

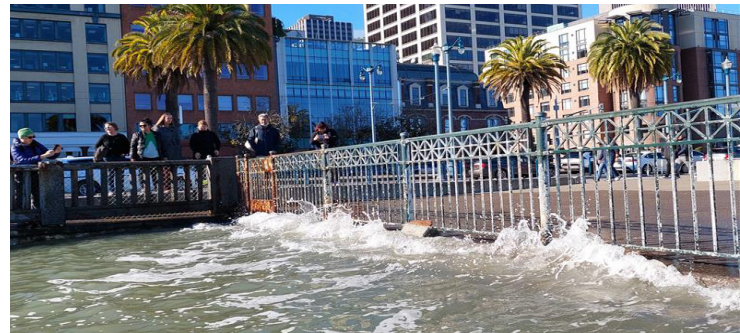


# PROTECTING OUR SAN FRANCISCO BAY

The San Francisco Bay Conservation and Development Commission (BCDC) protects and enhances San Francisco Bay and advances the Bay's responsible, productive, and equitable uses — for this and future generations — as we face a changing climate and rising sea levels.

## THE BAY IS RISING

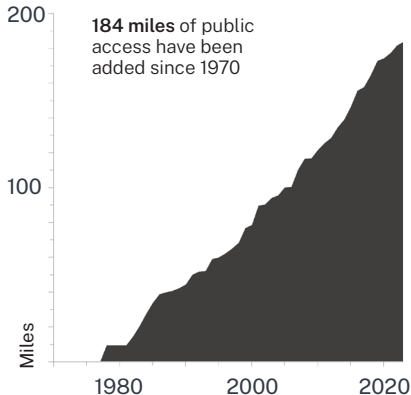
Rising sea level is no longer a distant threat, and the San Francisco Bay Area stands to be one of the hardest hit areas in North America. We're bringing together communities, businesses, environmentalists, cities, and counties to act now to protect people, property, and natural habitat.



King Tides flooding in San Francisco in 2023.

Historical trends at BCDC through 2023. ▼

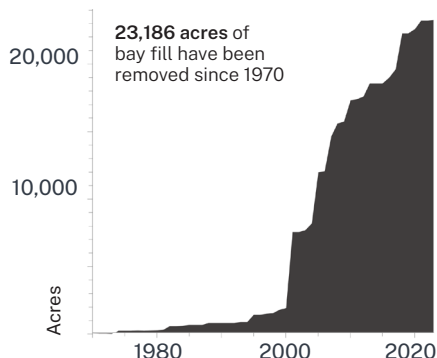
### PUBLIC ACCESS TRAILS



## THE BAY IS FOR EVERYONE

The Bay is a resource that is meant to be shared and enjoyed by all, but not all communities have equitable access to it. We find opportunities to create and improve **public access** to the Bay and its shoreline. Since 1970, over 1,200 acres of public parks and open spaces have been added to the Bay shoreline through BCDC-issued permits. Additionally, public trails are now 184 miles longer due to BCDC's permitting actions.

### CHANGE IN BAY SURFACE



## THE BAY IS BEING RESTORED

We were founded in 1965 to stop the San Francisco Bay from being filled indiscriminately by local governments, which harms our environment. Since BCDC was established, the Bay has actually grown larger because **we carefully control the amount of new Bay fill** for new development and as a result of various projects to restore the Bay and its wetlands, which were authorized by BCDC.

[BCDC.CA.GOV](https://www.bcdc.ca.gov)

[INFO@BCDC.CA.GOV](mailto:INFO@BCDC.CA.GOV)



@SF\_BCDC



@SFB CDC



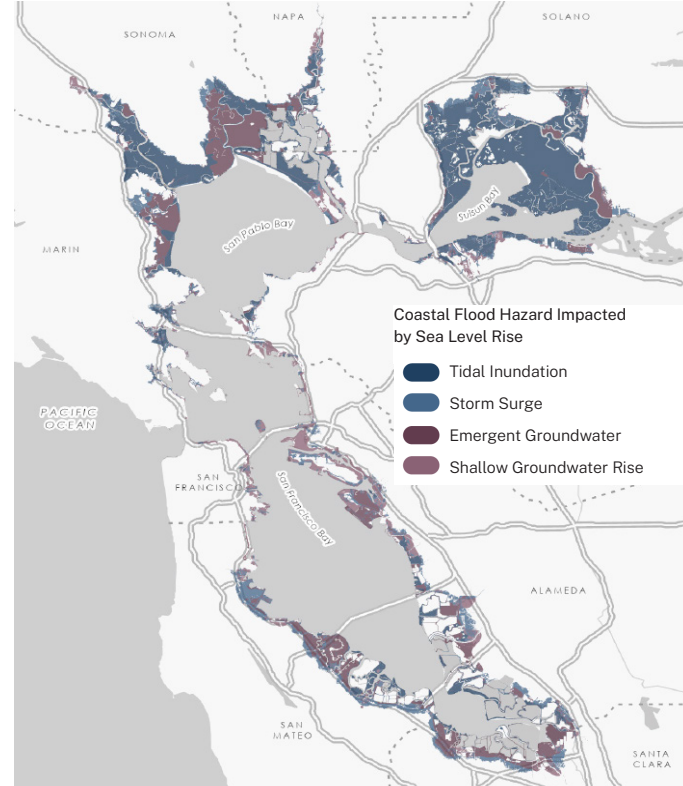
SFB CDC



# WHAT IS AT STAKE

- The Bay Area is already experiencing the manifestations of climate change and rising sea level caused by flooding from high tides, storm surge, and bigger storms with more rain. Their ramifications – threatened habitat that would otherwise protect shoreline communities, disrupted transportation networks, untreated wastewater flowing into the Bay, parks and open space under water, and water flowing into places that once were dry – are only projected to worsen in decades to come.
- The anticipated cost of rising sea level adaptation projects is expected to be \$110 billion by 2050. BCDC is leading **Bay Adapt**, an initiative to establish regional agreement on the actions necessary to protect people and the natural and built environment from rising sea level.

✓ BCDC staff visiting restored former salt ponds.



▲ Impacts of rising sea level in the San Francisco Bay by 2050.

## WHO IS BCDC?

- BCDC is the state commission responsible for protection and enhancement of the San Francisco Bay. We review and approve any development in the Bay and adjacent waterways, the Suisun Marsh, and within 100 feet of the Bay shoreline.
- BCDC has a small, agile staff of 55, including planning, regulatory, and administration teams.

✓ San Francisco Waterfront view.

## THE YEAR AHEAD FOR THE BAY AND BCDC

- In December 2024, BCDC adopted the **Regional Shoreline Adaptation Plan** (RSAP) fulfilling its responsibilities under SB272 (Laird, 2023) to guide coordinated, locally planned rising sea level adaptation actions that all fit together regionally to realize shared goals. BCDC will spend 2025 working with and providing technical assistance to the region's more than 50 cities and counties ringing the Bay as they prepare local rising sea level adaptation plans.
- In 2025, BCDC will be taking action on **Permitting Reform** by proposing rule changes for permitting, including housing and development. Permit applicants will benefit from application forms written in easy-to-understand language and a streamlined and less confusing application process.



### SAN FRANCISCO BAY CONSERVATION AND DEVELOPMENT COMMISSION

375 Beale St., Suite 510, San Francisco, California 94105  
tel 415 352 3600