



# Local Electeds Regional Task Force

Meeting #4  
May 1, 2024



# **CALL TO ORDER AND ROLL CALL**

# **CHAIR REPORT AND WELCOMING REMARKS**





# AGENDA

- 5 | Call to Order/Roll Call
- 5 | Chair Report/Welcoming Remarks
- 10 | Round Robin Updates
- 15 | Briefing: Regional Shoreline  
Adaptation Plan Update
- 40 | Briefing and Discussion: Two Models  
for Countywide Governance
- 10 | Public Comment
- 5 | Next Steps/Wrap Up



# MEETING FOCUS

- Update on the Regional Shoreline Adaptation Plan guidelines.
- Discuss how elected officials can identify and accelerate new ways of governing how we plan, fund, and implement rising sea level resilience projects.



## ROUND ROBIN UPDATES

*What is happening in your city?*

# **Briefing: Regional Shoreline Adaptation Plan Update**



# New legislation to support sea level rise adaptation (SB 272, 2023)

- Mandates local jurisdictions to develop **subregional resiliency plans** and for BCDC to develop guidelines that those plans must follow
- Requires BCDC to review - and **approve or deny** - plans based on consistency with guidelines
- **Prioritizes State funding** to create plans and for projects in approved plan jurisdictions
- Guidelines to be adopted by BCDC by **12/31/2024**



- 
- The background of the slide is a photograph of a coastal scene. In the foreground, there is a rocky shoreline with some dry grass. A white sailboat is docked in the water. In the background, there is a large, white, domed building, possibly a church or a government building, surrounded by trees and other smaller buildings. The sky is clear and blue.
- ✓ Aligned
  - ✓ On Track
  - ✓ Linked to funding



# SB 272 Requirements

## Minimum Requirements for SLR Resiliency Plans:

- Best available science
- Vulnerability assessment, including at-risk communities
- Adaptation strategies and projects
- Planning and implementation leads
- Timeline for updates
- Economic impact analysis for critical infrastructure

**Our work is going above and beyond by creating the guidelines collaboratively and emphasizing equity and nature-based solutions**



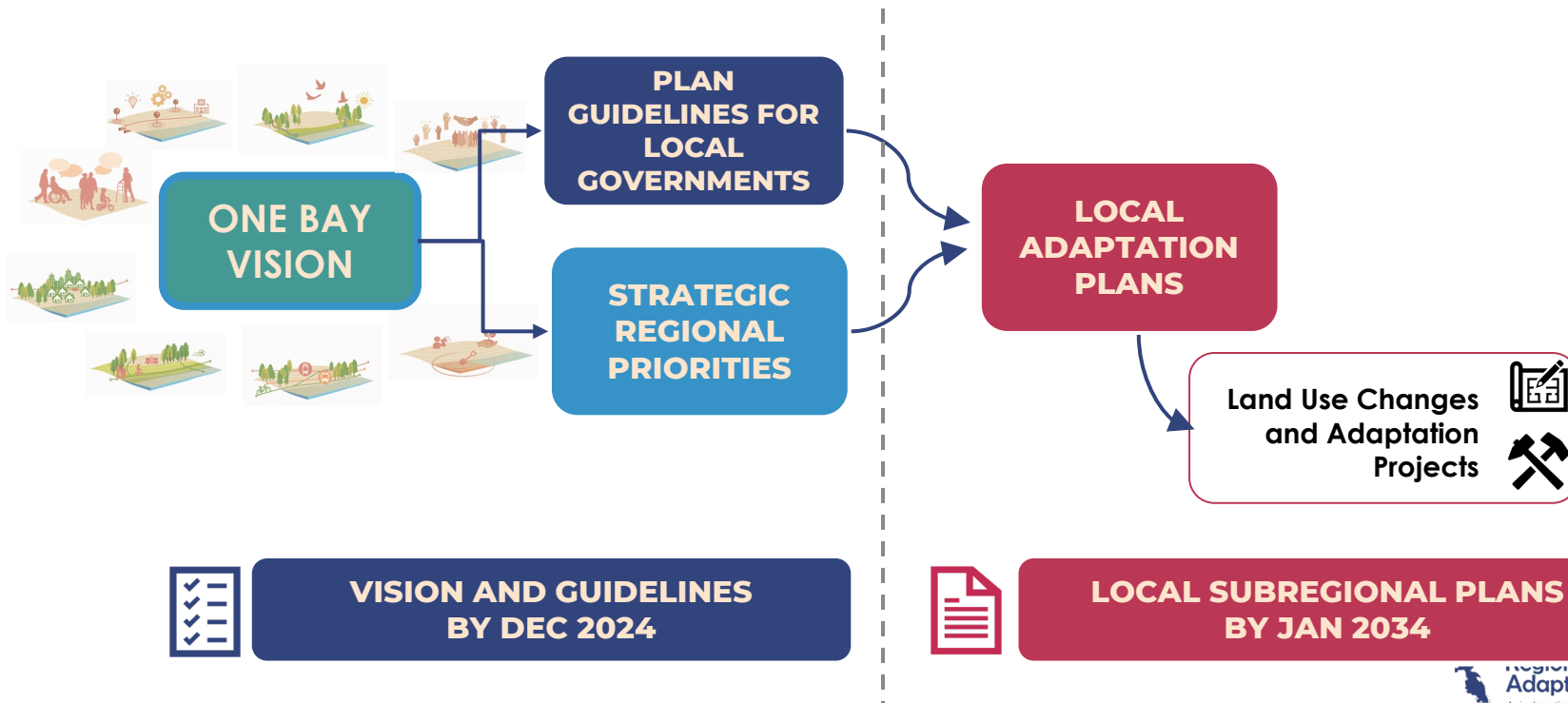
# How Do We Start Developing Guidelines?



# What Constitutes The Regional Shoreline Adaptation Plan?



**REGIONAL  
ADAPTATION  
ONLINE MAP**



# Where Are We Now?



## WHAT IS A SUBREGIONAL PLAN?

### Possible Scale and Leads

- County Plan
- Single Jurisdiction Local Plan
- Multi-Jurisdictional Local Plan
- Combo

### Plan Contents

- Vulnerability Assessment
- Adaptation Pathways
- Project List
- Land Use Plan
- Implementation Plan

### Submission and Adoption

- Submit to BCDC for approval
- Local adoption
- Incorporated into local plans
- Eligible for prioritized funding for projects after adoption



# Working Plan Guiding Principles

- **Flexible**
  - Multiple ways to meet requirements
  - Differing definitions of “subregion” depending on existing relationships
- **Aligned**
  - Maximize existing planning processes/requirements as much as possible
  - Benefits locally, sub-regionally, and regionally
- **Right-Sized**
  - Minimum requirements to meet SB 272 and be effective in leading to outcomes
  - Avoid especially burdensome requirements
  - Recognize differing levels of capacity - don't leave lower capacity jurisdictions behind
- **Building on Existing Efforts**
  - Ability to utilize existing elements that meet the guidelines
  - Plan requirements look at what is working in existing plans rather than starting from scratch
- **Impactful**
  - Plans are adopted, codified, and contain enough information to catalyze implementation of policies and projects

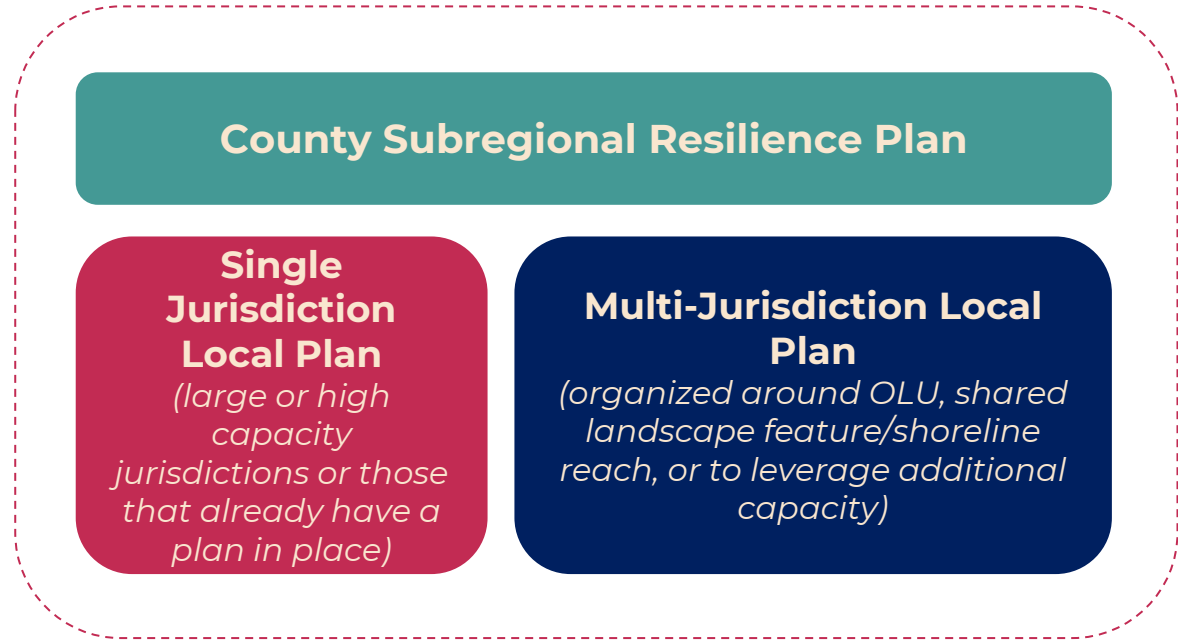
# Subregional Plan Requirements Key Concepts

## County Plan

- Covers unincorporated parts of the county
- Coordinates and organizes local plans

## Local Plans

- Jurisdictions may submit **either** a single jurisdiction local plan or partner with their neighbors to submit a multi-jurisdiction local plan



## Subregional Shoreline Resiliency Plan

# Draft Guidelines Key Elements

## Plan Element Guidelines

1. Element A: Overview of Planning Process
2. Element B: Existing Conditions
3. Element C: Vulnerability Assessment
4. Element D: Adaptation Strategies and Pathways
5. Element E: Project List
6. Element F: Land Use Plan
7. Element G: Implementation Plan

## Minimum Standards and Considerations

1. Equitable Engagement and Participation Standards
2. Time Horizons Standards
3. Flood Hazard Standards
4. Minimum Assessment Categories
5. Vulnerability Assessment Standards
6. Adaptation Strategy Standards

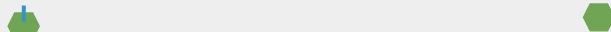
# Guidelines Review And Release Process



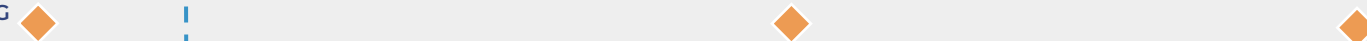
ELECTEDS ROAD SHOW



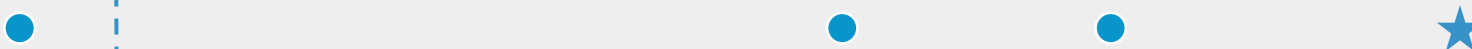
LOCAL ELECTEDS TASK FORCE



RSL WORKING GROUP



COMMISSION DISCUSSION



COMMISSION BRIEFING

COMMISSION BRIEFING

COMMISSION HEARING

COMMISSION ADOPTION

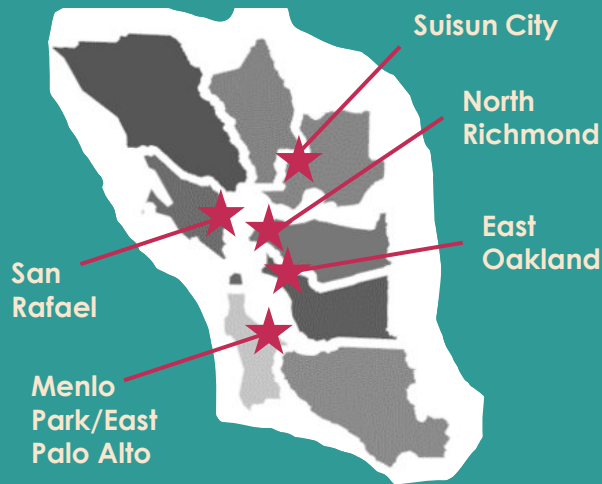


# Come Join Us:

## Local Workshops in May/June 2024

- Local workshops hosted **in partnership with Community-Based Organizations (CBOs)** in five vulnerable shoreline communities
- Bring together local community members **with local government** and stakeholders
- Focus on local and regional risks and opportunities to help **co-develop the new RSAP Guidelines**

### Five Workshops Locations Hosted in Vulnerable Shoreline Communities



# **Briefing And Discussion: Two Models for Countywide Governance**

May 1, 2024

***BCDC Bay Adapt Local Electeds Regional Task Force***

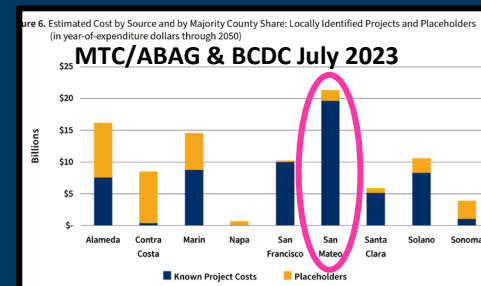
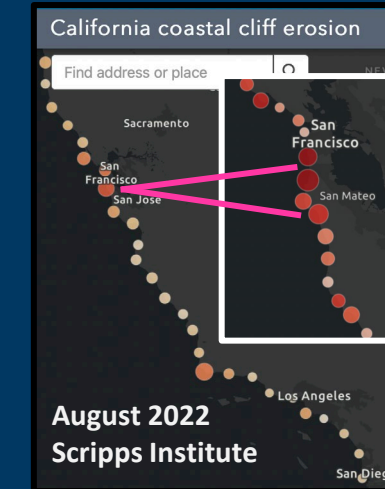
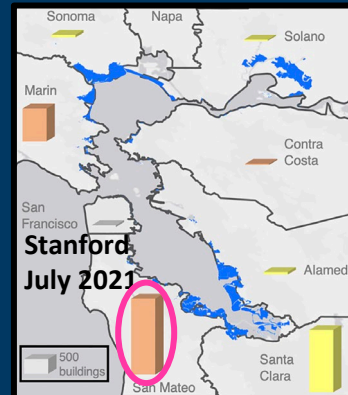
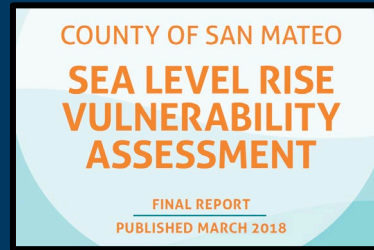
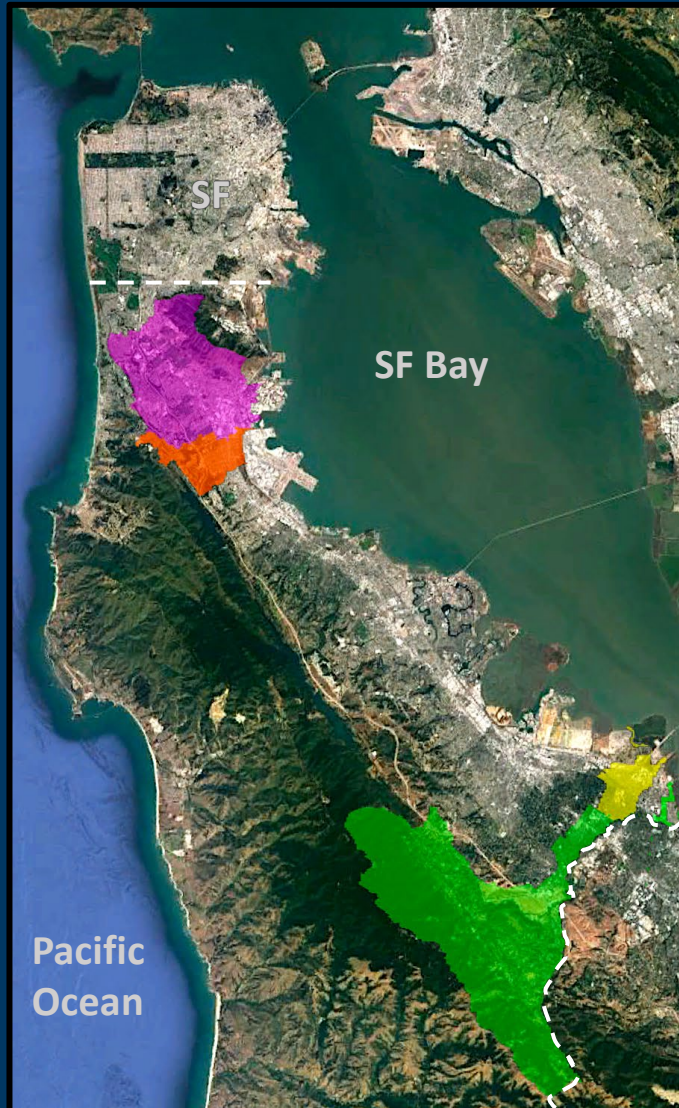
**San Mateo County Flood and Sea Level Rise Resiliency District**

**Dave Pine, Lisa Gauthier, and Len Materman**

**info@OneShoreline.org**

**OneShoreline**  
Building Solutions for a Changing Climate

# OneShoreline Background



Climate change is a transformative challenge that local jurisdictions were not well-positioned to address individually.

State law created OneShoreline on Jan. 1, 2020 as the first independent government agency in CA to plan and build regional resilience related to the water-related impacts of climate change: flooding, sea level rise, coastal erosion, and groundwater rise.

A holistic approach to:  
THREATS  
GEOGRAPHY  
OBJECTIVES



# The Development of OneShoreline: 2013-2020

2013

Rep. Speier, Assm. Gordon, and Sup. Pine convene a conference to discuss the sea level rise challenge facing San Mateo County

2015

County launches "Sea Change SMC" initiative and a detailed vulnerability assessment

2016

City / County Assn. of Governments of San Mateo County (C/CAG) Board ad hoc committee analyzes needs and begins to discuss options

2017-18

C/CAG's new Water Coordination Committee (1 Co. Sup. & 4 city electeds) and a Staff Advisory Team develop an approach to recommend to County Sups and C/CAG Board: State legislation for a new/reconstituted special district and commitments of local start-up funding

2019

C/CAG Board & County Board of Sups approve the plan, all 20 cities approve shared funding, State legislation enacted

Jan. 1,  
2020

San Mateo County Flood & Sea Level Rise Resiliency District (OneShoreline) established

## **OneShoreline Governance – Board of Directors includes:**

- Two San Mateo County Supervisors (1 at-large, 1 represents most of Pacific Coastsides)
- Five city elects (1 at-large, 1 from Coastsides, 1 each from Bayside cities in the north, central, and south area of the county)

## **OneShoreline Operational Funding (distinct from project and property tax funding)**

- In 2019, all 20 cities in SMC passed a resolution to support OneShoreline start-up operations for 3 years; three annual funding tiers of \$55K, \$40K, and \$25K based on city population.
- City contributions in 2020, 2021, and 2022 totaled \$750,000/year, which was matched by San Mateo County each year.
- Operating efficiencies and external funding have enabled OneShoreline to make 3 years of funding for operations last 8 years – through approximately November 2027.
- Substantial project funding secured through agreements with local agencies and grants.
- A ballot measure is under consideration for future operational and project funding.

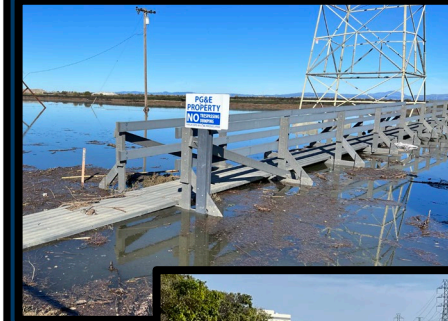
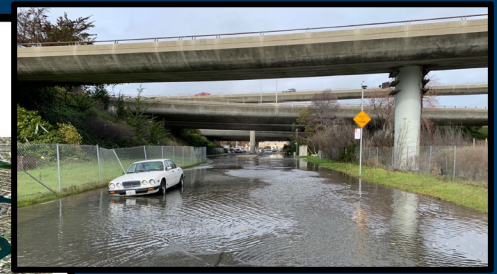
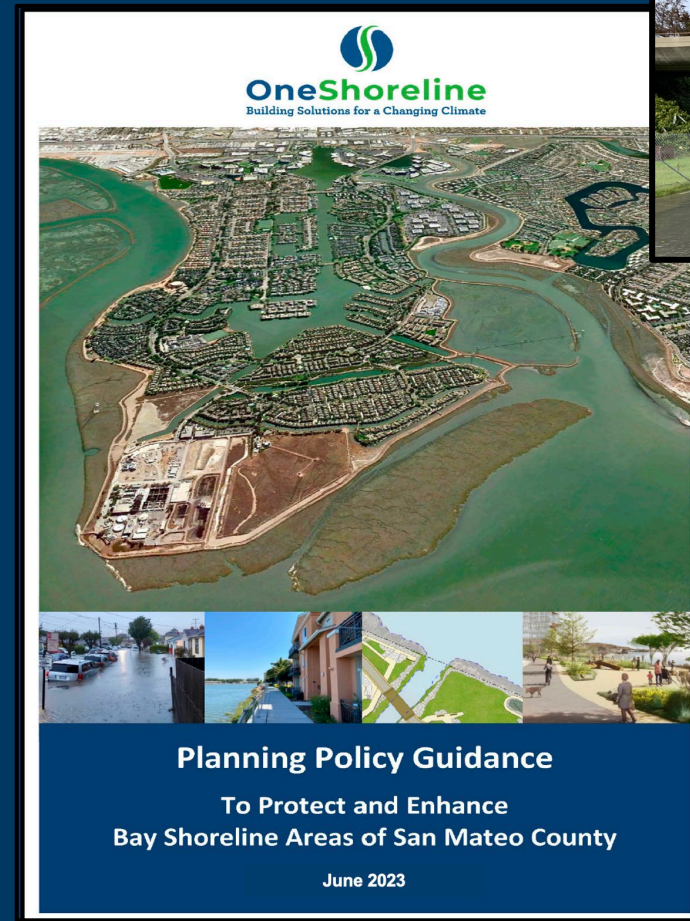
# OneShoreline

## ➤ Priorities

- Plan land use and infrastructure for future climate-driven conditions

Policies that guide what we want our communities to look like should require that we site and design buildings, utilities, transportation, open space, and other assets to function for their intended lifespan as the climate changes.

However, many local and permitting agency policies – and their approvals of projects near the water's edge – make building resilience for developed, natural, and public access areas more difficult and costly.



**OneShoreline**  
Building Solutions for a Changing Climate

Request for Proposals to Develop

Planning Policy Guidance for  
Resilient Public Infrastructure  
in San Mateo County

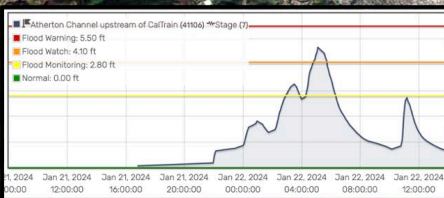
Deadline to Respond:  
February 29, 2024 at 5:00 PM



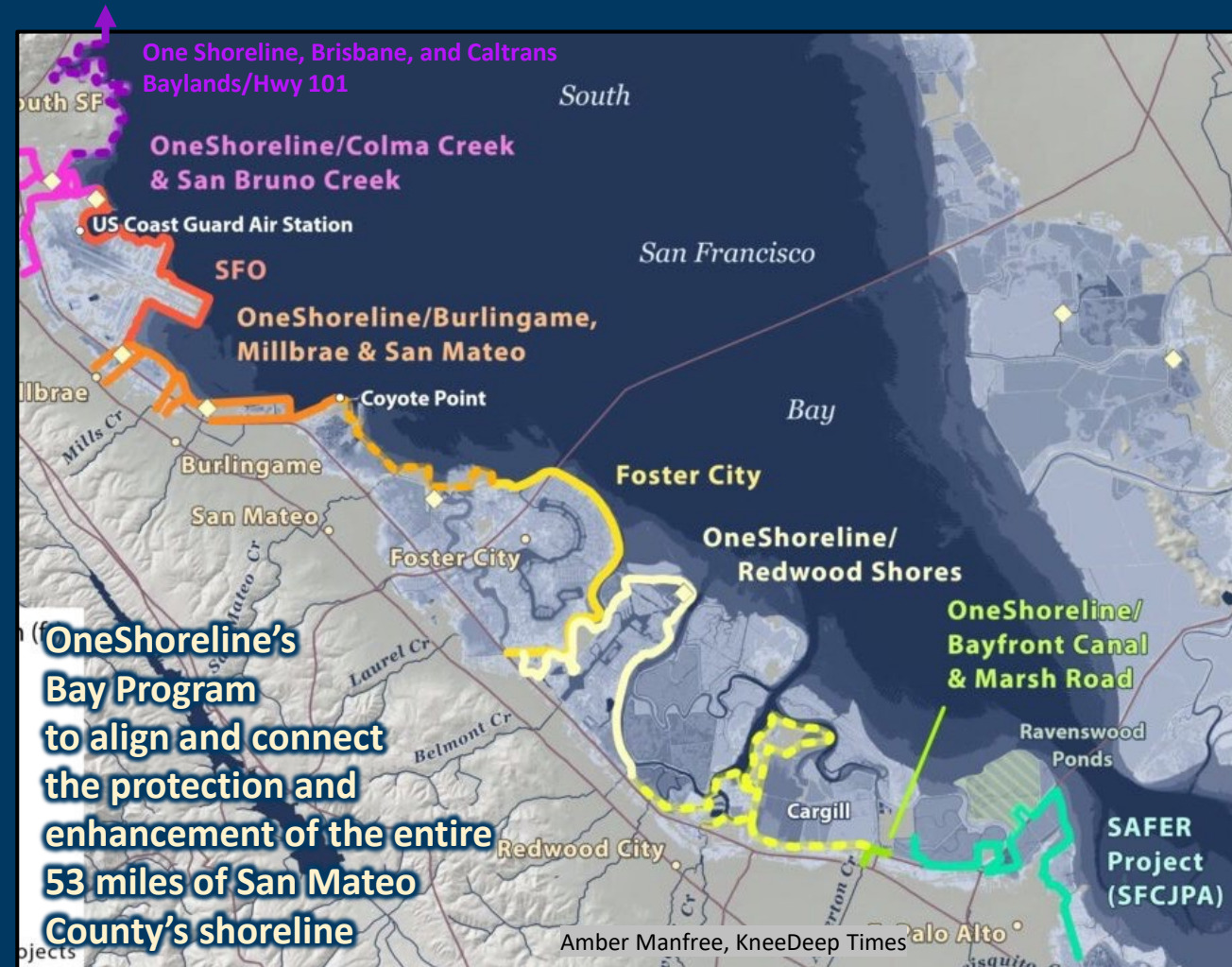
## OneShoreline ➤ Priorities

- Advance projects that align short- and long-term resilience across jurisdictions

➤ Alert people to, and reduce the impacts of, extreme storms



- Develop ongoing funding to sustain efforts for resilience today and long-term





*Thank you*







# Marin County Sea Level Rise Collaboration

BCDC BAY ADAPT LOCAL ELECTEDS TASK FORCE

May 1, 2024

Aerial photo by Sound Visions Media





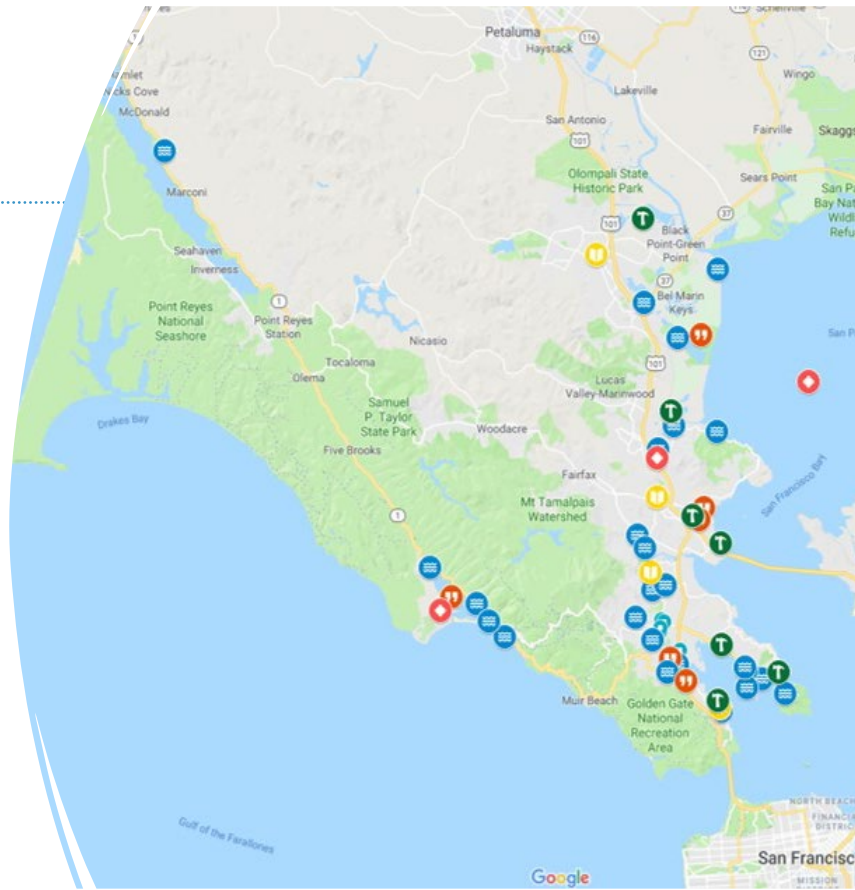
# History and Need

---

- Representatives from cities, towns, agencies plus county
- Guided the development of the vulnerability assessment, then identified countywide coordination needs
  - Feedback on staff-led work to address countywide needs
- Meets monthly to learn together and share local information on adaptation
- Participates in efforts at local and regional scales
  - Voice of leadership in the community

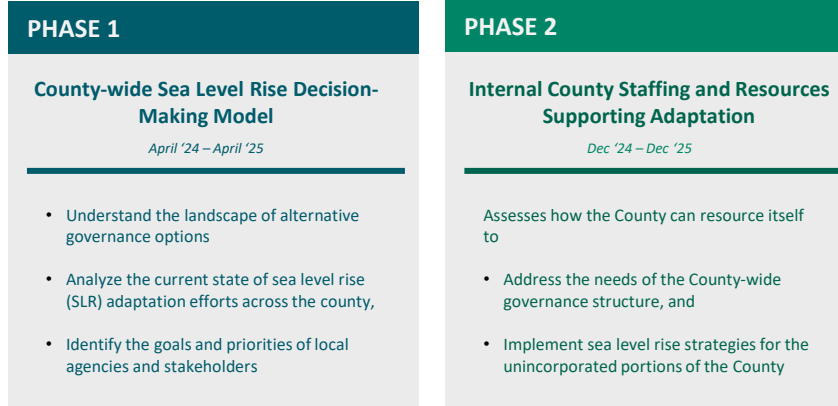
# A Responsive Marin

- Need to be more than a coordinated group to move forward with adaptation
- Ongoing and upcoming mandates, limited funding, and projects to staff and fund
- Prioritization for resources based on equity, vulnerability, geography



# Marin County has retained AECOM to support this effort

Our project is broken down into two phases:



# Key objectives of this effort



## **Build upon existing efforts:**

This project should aim to, whenever possible, build upon existing local, county, regional, state or national level work and avoid duplicating efforts.



## **Create an inclusive approach that engages all relevant stakeholders:**

The process for identifying a new entity should center racial equity into its strategy; ensuring access to decision-making and transparent funding and policy tradeoffs.



## **Coordinated Sea Level Rise adaptation program:**

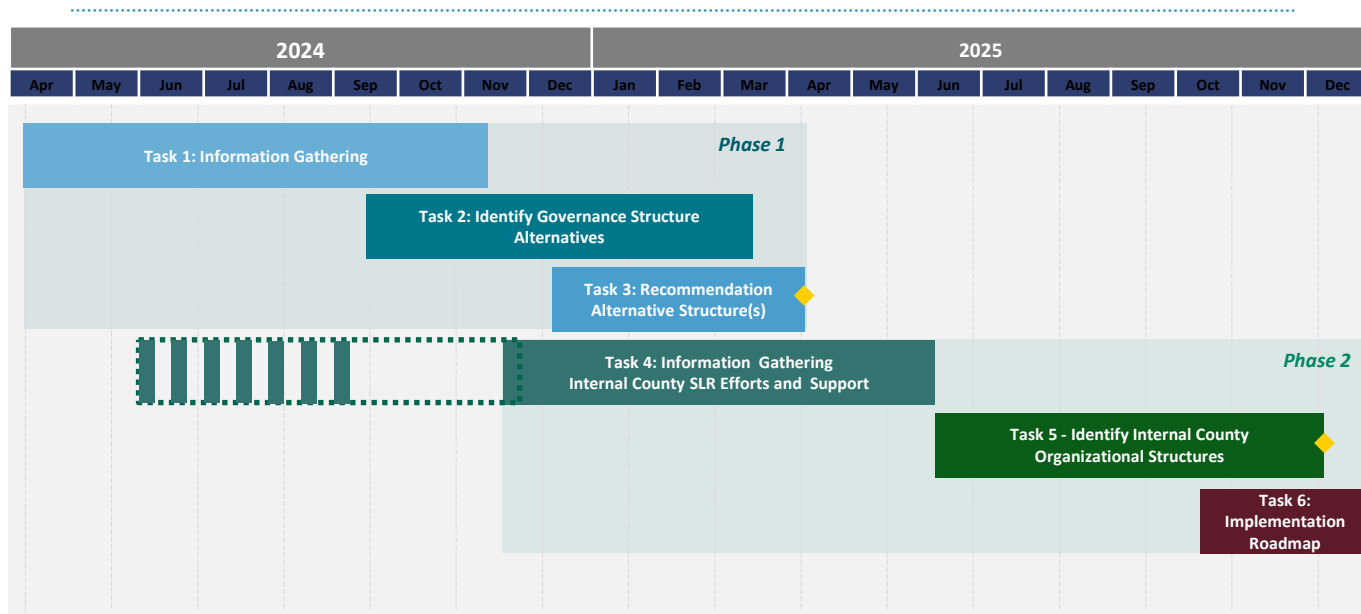
Create an entity prepares County-wide adaptation program including identification of policies and implementable strategies; [garnering the support of communities and other regulatory agencies.](#)



## **Maximize Funding Opportunities:**

The new entity should maximize the ability of the County to obtain regional, State and Federal grants and other financing streams as appropriate.

# Full effort is expected to take 18 months



Legend:



Key Deliverable Submission



Thank You



Photo Credit: Jeff Wong

Marin Sea Level Rise  
May 1, 2024  
[www.MarinCounty.gov](http://www.MarinCounty.gov)

**PUBLIC COMMENT**

# **WRAP UP AND NEXT STEPS**

# 2024 MEETINGS CALENDAR

- May/June – engage in RSAP workshops (invites to go out soon)
- Aug/Sept – review RSAP guidelines and make recommendation to Commission to adopt

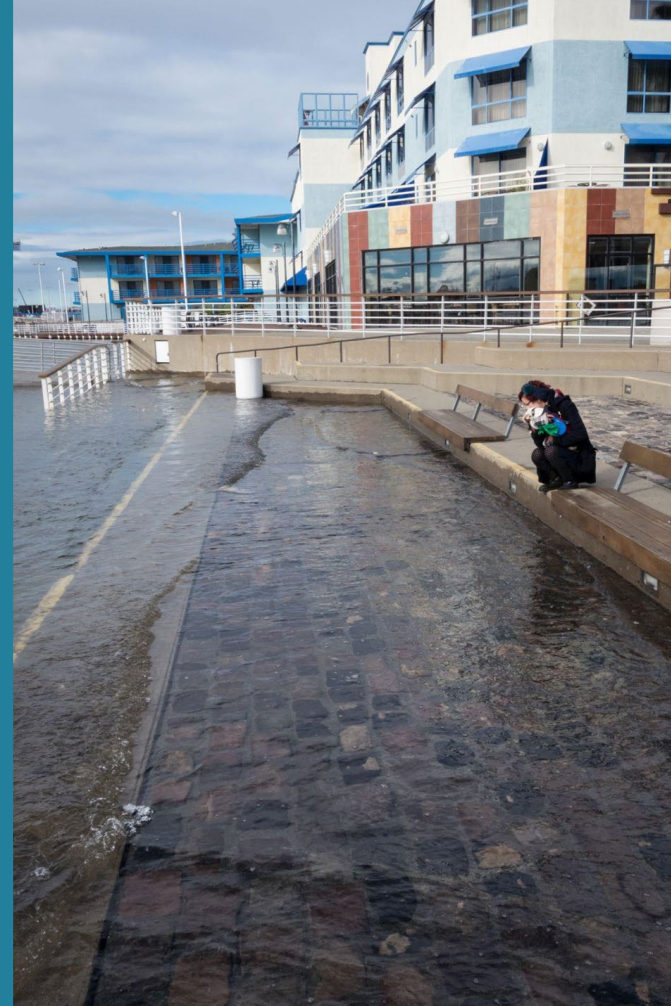


Photo Credit: California King Tides Project. Jack London Square, Oakland