



Local Electeds Regional Task Force

Meeting #3
December 19, 2023



CALL TO ORDER AND ROLL CALL

CHAIR REPORT AND WELCOMING REMARKS



AGENDA



- 5 | Call to Order/Roll Call
 - 5 | Chair Report/Welcoming Remarks
 - 10 | Round Robin Updates
 - 30 | Briefing and Discussion: Regional
Shoreline Adaptation Plan Updates
and Outreach Plans
 - 30 | Briefing and Discussion:
Implementing SB 272 and the
Regional Shoreline Adaptation Plan
 - 10 | Public Comment
 - 5 | Next Steps/Wrap Up
-

MEETING FOCUS

- Discuss how elected officials should play a lead role in advancing local climate adaptation planning and projects in light of SB 272



ROUND ROBIN UPDATES

What is happening in your city?

**Briefing And Discussion:
Regional Shoreline Adaptation
Plan Updates And Outreach
Plans**



WHAT IS THE REGIONAL SHORELINE ADAPTATION PLAN (RSAP)?

A region-wide plan for the Bay shoreline that guides the creation of coordinated, **locally-planned** sea level rise **adaptation actions** that **work together** to meet **regional goals**.



OCEAN
PROTECTION
COUNCIL





WHY DO WE NEED THE RSAP?

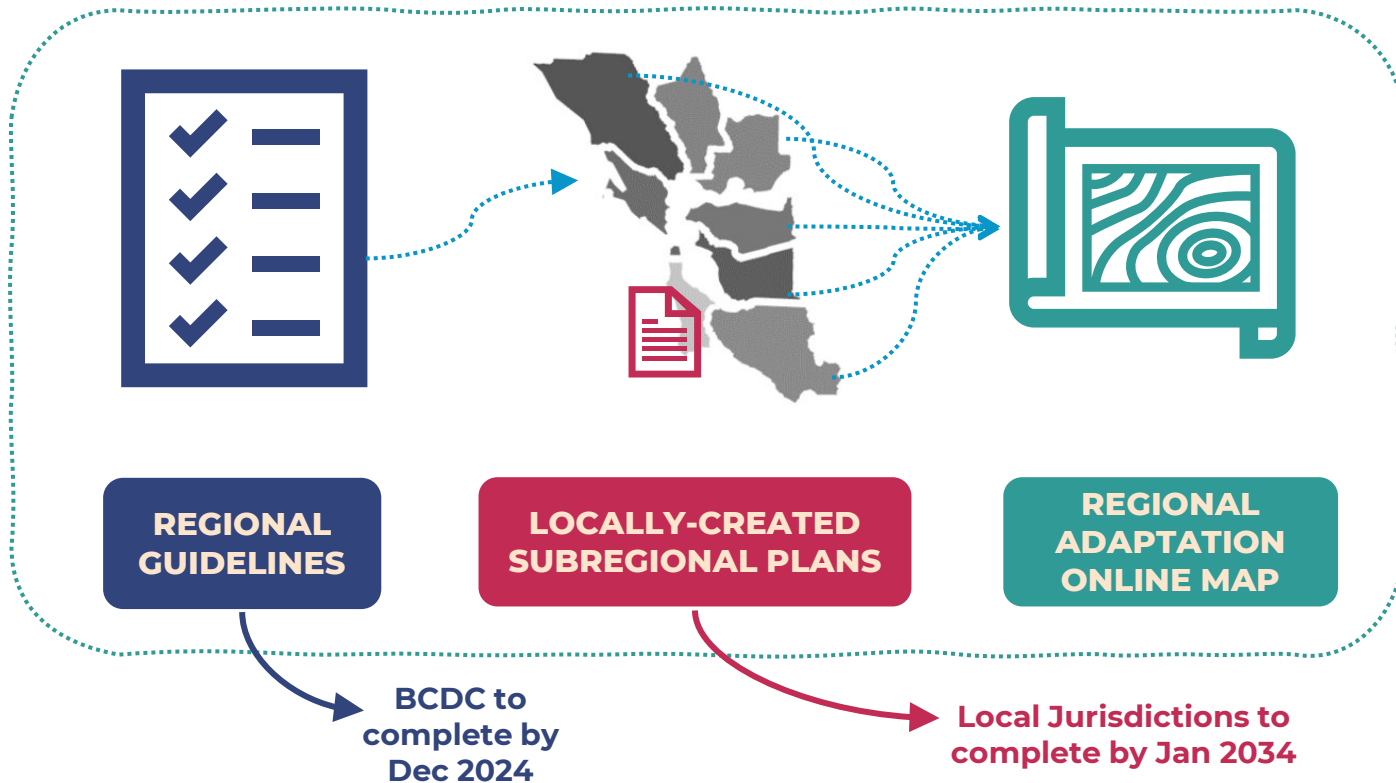
- Sea level rise impacts will be felt **region-wide**
- Uncoordinated or poorly designed adaptation projects will **result in greater harm, loss, and cost**
- The estimated cost is enormous (\$110 billion), and **we cannot afford to go it alone.**
- Adaptation will be iterative and new ways to **collaborate need to be created regionally**
- Local actions must add up to **increased local and regional resilience**

WHAT CAN THE RSAP DO FOR LOCAL GOVERNMENTS?

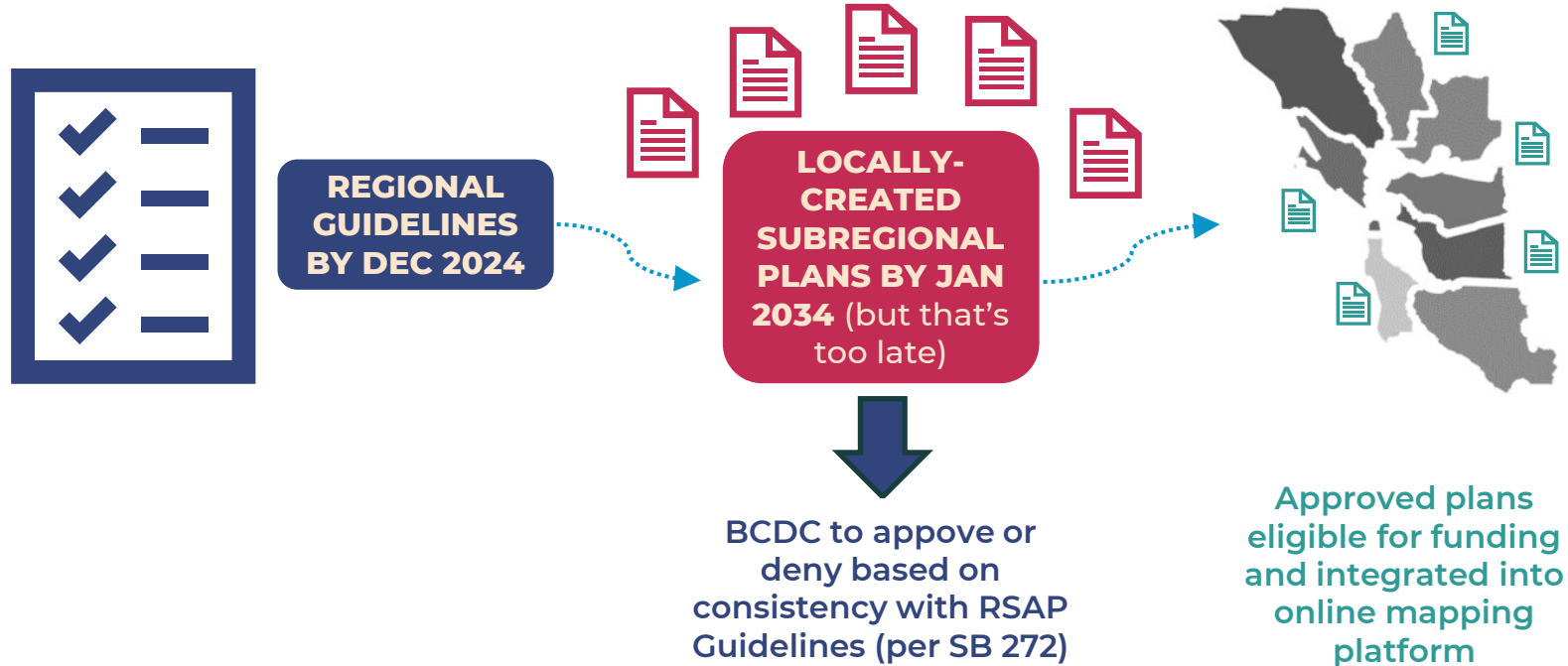
- ✓ Easier to know **what to plan for** and how to do it without endangering your neighbors
- ✓ Easier **access to State funding**
- ✓ **Prioritize** EJ communities, local and regionally-significant infrastructure, habitats, and areas most at risk
- ✓ **Integrate state mandates** (e.g., SB 272) into a cohesive planning process
- ✓ Encourage **collaborative multi-benefit adaptation** projects



RSAP COMPONENTS



WHAT IS A SUBREGIONAL ADAPTATION PLAN?



The RSAP: Creating a Vision for the Future of the Shoreline

FALL POP-UPS

- 9/7: Richmond - Thrive Thursday
- 9/8: San Rafael - Free Movies in Peacock Park "Vivo"
- 9/17: Newark - Newark Days Community Information Faire
- 9/22: San Rafael - Free Movies in Pickleweed Park
- 9/23 San Francisco – Youth Climate EJ Summit
- 9/30: Oakland - Land is Liberation
- 10/7: American Canyon - Pumpkin Path
- 10/14: Menlo Park – Belle Haven Neighborhood Block Party
- 10/15: Mountain View - 40th anniversary of Shoreline at Mountain View Regional Park
- 10/21: Suisun City – Get the Rush at Rush Ranch



SURVEY: WHAT'S YOUR VISION FOR THE FUTURE OF THE SHORELINE?

170+ responses

A comprehensive approach that addresses the problem on all levels.

Environmental, climate, economic, biodiversity, quality of life.

-Anonymous

Resilient shorelines that are **multi-beneficial for tidal habitats, flood protection, water quality supply and quality.** No more development along the shorelines and in fact, we should seriously consider appropriate retreat for infrastructure, etc. where feasible.

--Anonymous, San Francisco

Living in harmony with our evolving landscape.

-Jenny, Berkeley

That sea level rise and climate change **offers an opportunity to rethink our current systems** and social structures, reorganizing the world to **foster human relationships to one another and to the natural world.**

-Anonymous, Emeryville

Affordable alternative housing for those affected by SLR, especially the most vulnerable and economically struggling.

- Lynn, Alameda

Government agencies working together to ensure the entire Bay Area is **working to the same set of bold objectives, fair and equitable principles** and **aggressive timeframes** to stay out ahead of this challenge.

-Paul, Alameda

Vulnerable low-income and BIPOC **communities are protected from flooding** and have **access to Bayshore recreation.**

Anonymous, Santa Rosa

We have adapted to rising water and learned to shape our communities **to defend where we can, and welcome the water in, where we can't.**

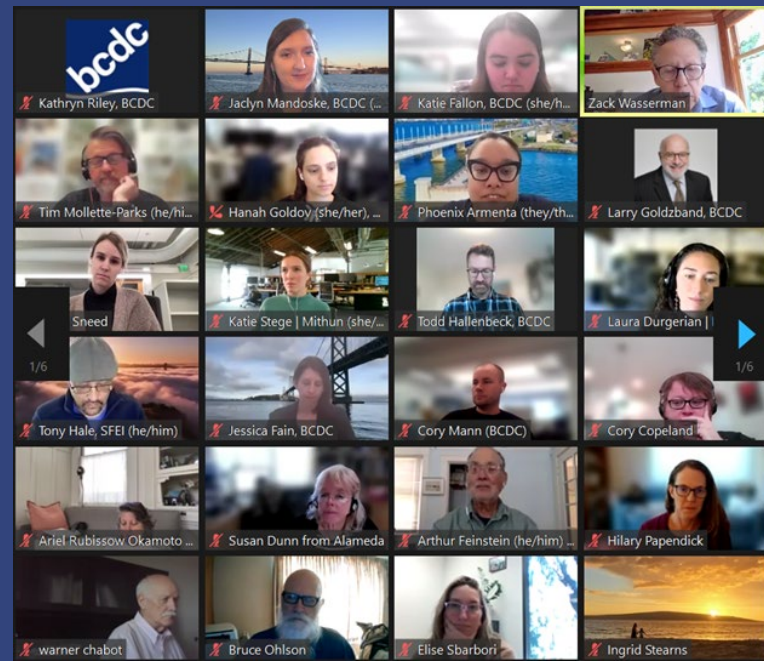
-Anonymous, Menlo Park



New video here: <https://vimeo.com/878363576>

PUBLIC WORKSHOP #1

Oct 26, 2023



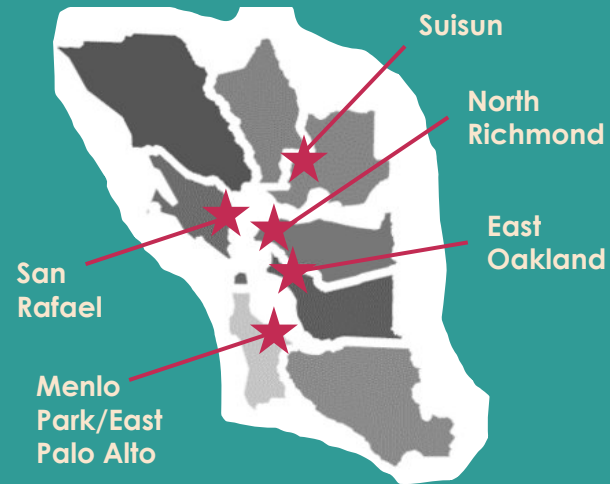
Regional Shoreline Adaptation Plan
An implementing project of BAY ADAPT

RSAP Local Workshops: Co-Creating the Regional Guidelines

LOCAL WORKSHOPS IN SPRING 2024

- Local workshops hosted **in partnership with Community-Based Organizations (CBOs)** in five vulnerable shoreline communities
- Bring together local community members **with local government** and stakeholders
- Focus on local and regional risks and opportunities to help **co-develop the new RSAP Guidelines**
- 3-hour workshop with a 1-hour shoreline tour

Five Workshops Locations Hosted in Vulnerable Shoreline Communities



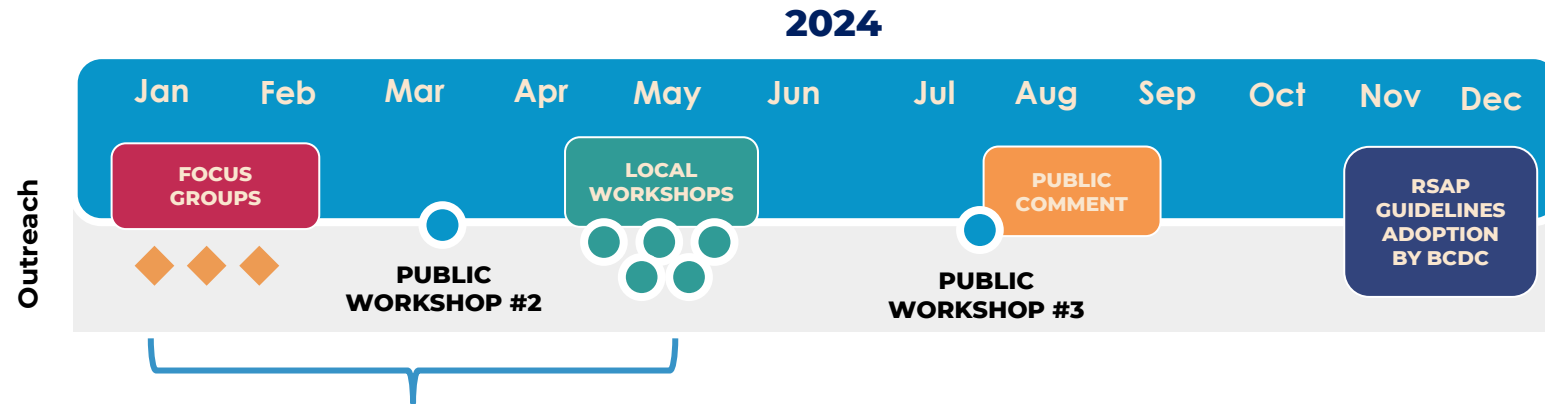
HOW CAN YOU LEAD YOUR COMMUNITY'S WORKSHOP

- **How would you like to be involved?**
 - Give welcoming remarks
 - Assist the planning committee
 - Volunteer staff to help
 - Suggest a tour location and co-host
- **What are your ideas for outreach?**
 - Share on social media
 - Suggest a meeting place
- **What else would you like to do to make this a success for your community?**

Five Workshops Locations Hosted in Vulnerable Shoreline Communities



LOOKING AHEAD: HOW TO STAY ENGAGED IN THE NEW YEAR

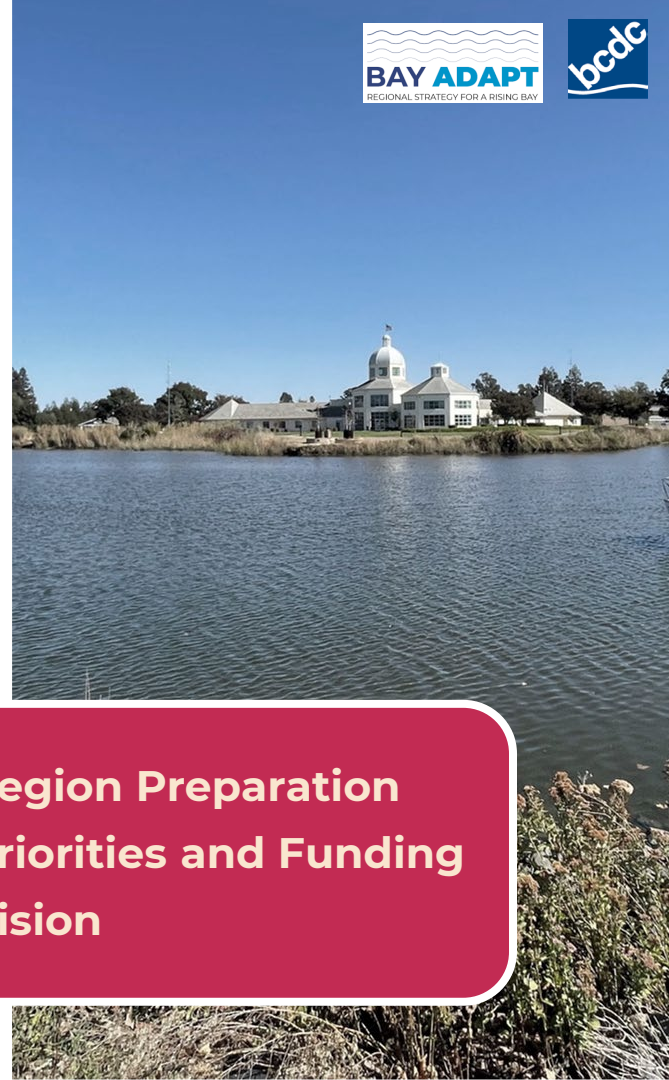


- **Focus Groups on Subregional Plans:** Jan – Feb 2024
- **Second Public Workshop:** Late-March 2024
- **Local Workshop Preparation:** Feb – May 2024
- **Local Workshops:** Late April – May 2024

**Briefing And Discussion:
Implementing SB 272 And The
Regional Shoreline Adaptation
Plan**

WHAT IS SB 272?: SEA LEVEL RISE PLANNING AND ADAPTATION REQUIREMENTS

- Requires “subregional shoreline resiliency plans” along the bay
- Requires BCDC to develop guidelines for subregional plans, based on Bay Adapt
- Requires BCDC to review – and approve or deny – plans based on consistency with guidelines
- Sets timelines for guidelines and plan completion
- **Prioritizes State funding for strategies and projects within approved plans**



- ✓ **Region Preparation**
- ✓ **Priorities and Funding**
- ✓ **Vision**

SB 272 REQUIREMENTS

Minimum Requirements for SLR Resiliency Plans:

- Best available science
- Vulnerability assessment, including at-risk communities
- Adaptation strategies and projects
- Planning and implementation leads
- Timeline for updates
- Economic impact analysis for critical infrastructure

Our work is going above and beyond by creating the guidelines collaboratively and emphasizing equity and nature-based solutions



GOOD NEWS! WE'RE ALREADY UNDERWAY

2023 SB 272 Enacted

2011
CLIMATE
CHANGE
POLICIES IN SF
BAY PLAN



2020
ART BAY
AREA



2021
BAY ADAPT
JOINT
PLATFORM

2024
REGIONAL SHORELINE
ADAPTATION PLAN
GUIDELINES

2025+
SUBREGIONAL PLAN
DEVELOPMENT,
ASSISTANCE &
IMPLEMENTATION

- ✓ Aligned
- ✓ On Track
- ✓ Linked to Funding



CALIFORNIA
**OCEAN
PROTECTION
COUNCIL**

GOALS FOR SUBREGIONAL PLANS

URGENT

Accelerate plan completion before 2034 deadline by providing support and incentives.

FLEXIBLE

Support jurisdictions where they're at and help them meet requirements in their own unique ways.

ALIGNED

Ensure outcomes are coordinated and fit with local plans, other sub-regional plans, and within the RSAP, and align with outer coast requirements (CCC).

EFFECTIVE

Position plans to “move the needle” on policies and projects

ADDITIVE

Ensure plans add up to something bigger than sum of their parts to adapt faster, better, and more equitably.



LOCAL FUNDING OPPORTUNITIES: SB1

OPC's SB 1 Grant Program

Launched last week!

Provide funding for coastal communities to develop consistent SLR adaptation plans and projects to build resilience to SLR along the entire coast of California and San Francisco Bay.

- Authorized via Senate Bill 1 (Atkins, 2021)
 - Directs the state to provide funding to local and regional governments to prepare for SLR
- Supports requirements of SB 272 (Laird, 2023)
 - SLR Criteria established as working guidelines



SB 1 Grant Program: SLR Planning and Project Criteria

- **Pre-planning:** Community Visioning, Data Collection, Vulnerability Assessments
- **Planning:** SLR Adaptation Plans, SF Bay Shoreline Adaptation Plans, Sector Specific Adaptation Plans
- **Projects:** Feasibility Studies/Design/Construction for nature-based and hybrid projects

Track 1: non-competitive

Track 2: competitive



Collaborating with BCDC to further SB 272

- SLR Criteria includes SF Bay Shoreline Adaptation Plan criteria – reviewed by BCDC, but expected to be updated and aligned with RSAP Guidelines
- Letter of Alignment from BCDC required for all planning proposals within jurisdiction
- BCDC staff will be involved in full proposal review



DISCUSSION

- **What additional information do you need for your city and your neighbors to apply for SB1 funding to start and complete local and subregional adaptation plans?**

PUBLIC COMMENT

WRAP UP AND NEXT STEPS

2024 MEETINGS CALENDAR

- Feb/March – prepare for RSAP Spring workshops
- May – engage in RSAP Spring workshops
- Aug/Sept – review RSAP guidelines and make recommendation to Commission to adopt



Photo Credit: California King Tides Project. Jack London Square, Oakland

THANK YOU!

Dana Brechwald

Assistant Planning Director for Climate Adaptation
Bay Conservation and Development Commission
Dana.brechwald@bcdcc.ca.gov

Jaclyn Mandoske

Senior Climate Adaptation Planner
Bay Conservation and Development Commission
Jaclyn.mandoske@bcdcc.ca.gov

Justine Kimball

Senior Climate Change Program Manager
Ocean Protection Council
Justine.Kimball@resources.ca.gov

