



# **PG&E OPERATIONS AND MAINTENANCE PROGRAM BCDC PERMIT APPLICATION NO. 2023.002.00 AND NO. 2023.003.MD**

**PRESENTED BY PG&E**

**JON WILCOX, SENIOR MANAGER ENVIRONMENTAL PROGRAMS**

**TIM ANDREWS, MANAGER WATER PROGRAM**

**CUYLER STAPELMANN, SENIOR LAND PLANNER**

**MAY 16, 2024**



# AGENDA

- Program Need & Purpose
- Program Overview and Background
- Activities Authorized
- Typical Activities and Classes
- Summary of Potential Impacts
- Selective Summary of Conditions





# PROGRAM NEED AND PURPOSE

- PG&E's mission in our communities is to deliver clean, safe, reliable, and affordable energy.
- The purpose of the proposed activities is to maintain energy transmission and distribution facilities to support delivery of safe and reliable energy in the Bay Area and will not result in significant changes in use of existing facilities beside the cessation of use of old facilities.
- Aligned with BCDC protections of the Bay environment and public access.





# PROGRAM OVERVIEW AND BACKGROUND

- Since 1987, PG&E has conducted operation and maintenance activities under BCDC Permits which expire May 31, 2024
- PG&E proposes to continue routine repairs, maintenance, replacements, removals, and retirements of existing electric and gas transmission and distribution facilities to maintain safe reliable energy delivery
- This permit would authorize activities for five years with an option for a 5-year renewal for existing equipment/facilities
- Two separate permit application submittals
  - Activities throughout BCDC Jurisdiction, except Suisun Marsh (No. 2023.002.00)
  - Activities within the Suisun Marsh (No. 2023.003.md)
- Similar activities as existing permit, with updated special conditions, definitions, and process for reporting/review





# PG&E PROJECTS WITHIN BCDC JURISDICTION AND PRIORITY USE AREAS

## 2023-2025: MAP LEGEND




### Projects 2022

-  Electric Transmission
-  Short Cycle

### Projects 2023

-  Electric Distribution
-  Electric Transmission
-  Gas Transmission
-  Short Cycle

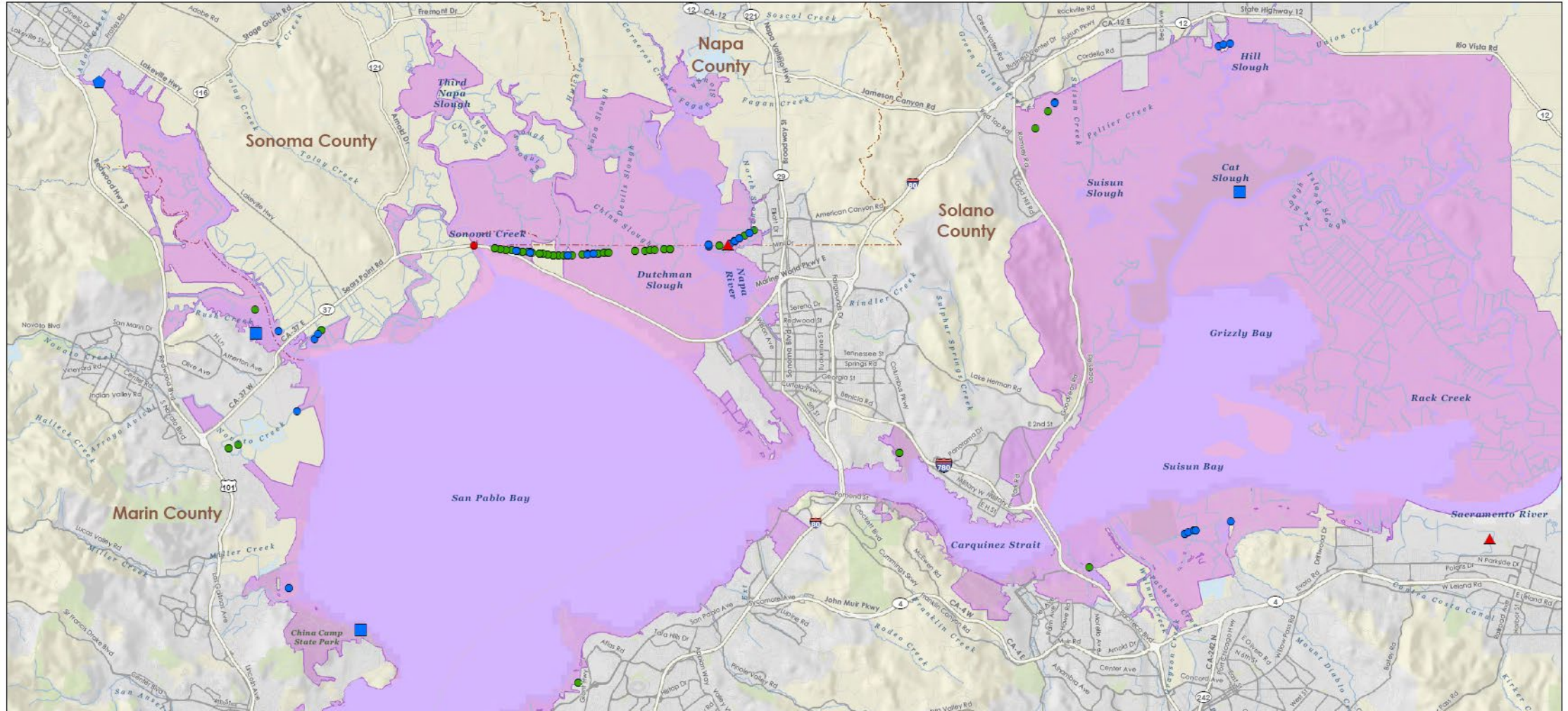
### Projects Planned 2024-2025

-  Electric Transmission
-  Gas Transmission
-  Short Cycle

 Approximate BCDC Jurisdiction and Priority Use Areas

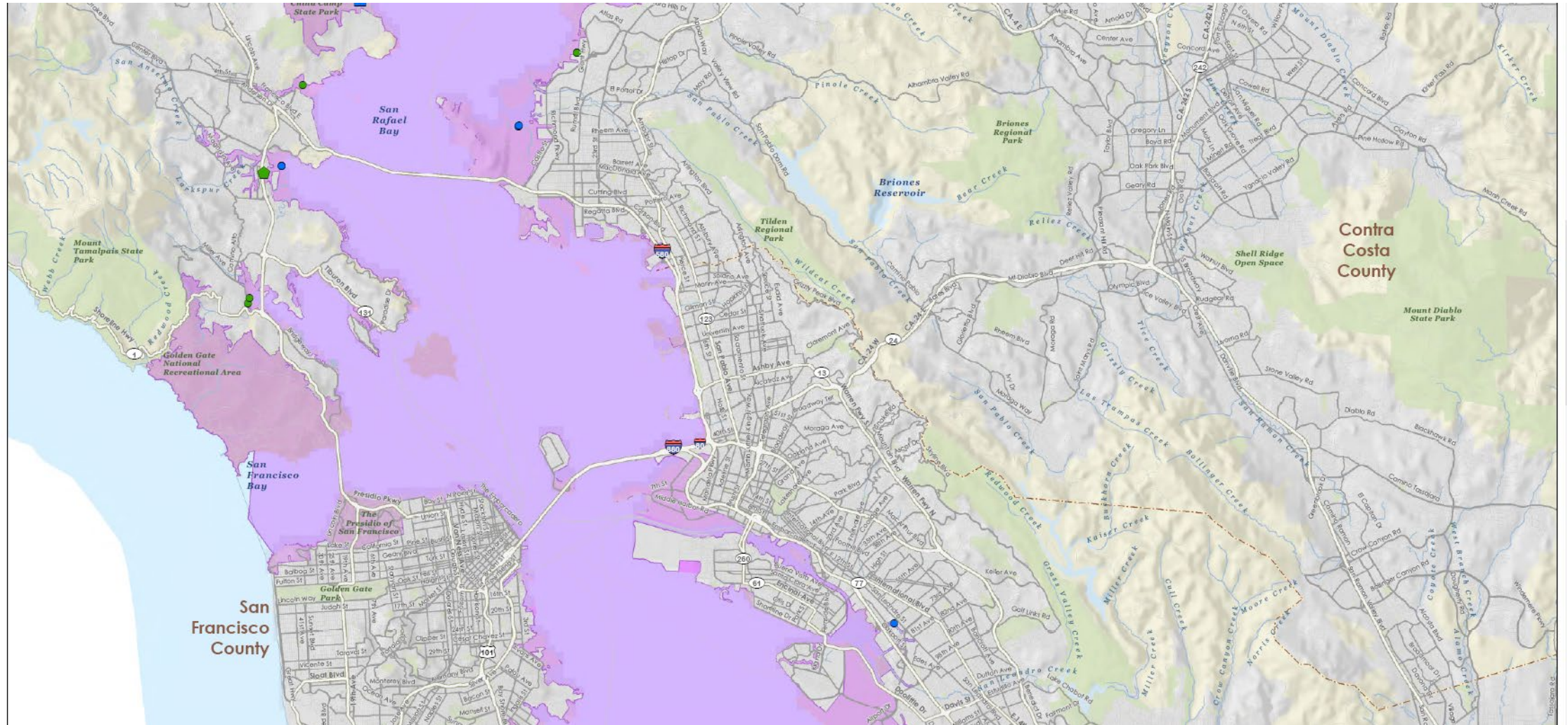


# PG&E PROJECTS WITHIN BCDC JURISDICTION AND PRIORITY USE AREAS 2023-2025: MAP 1





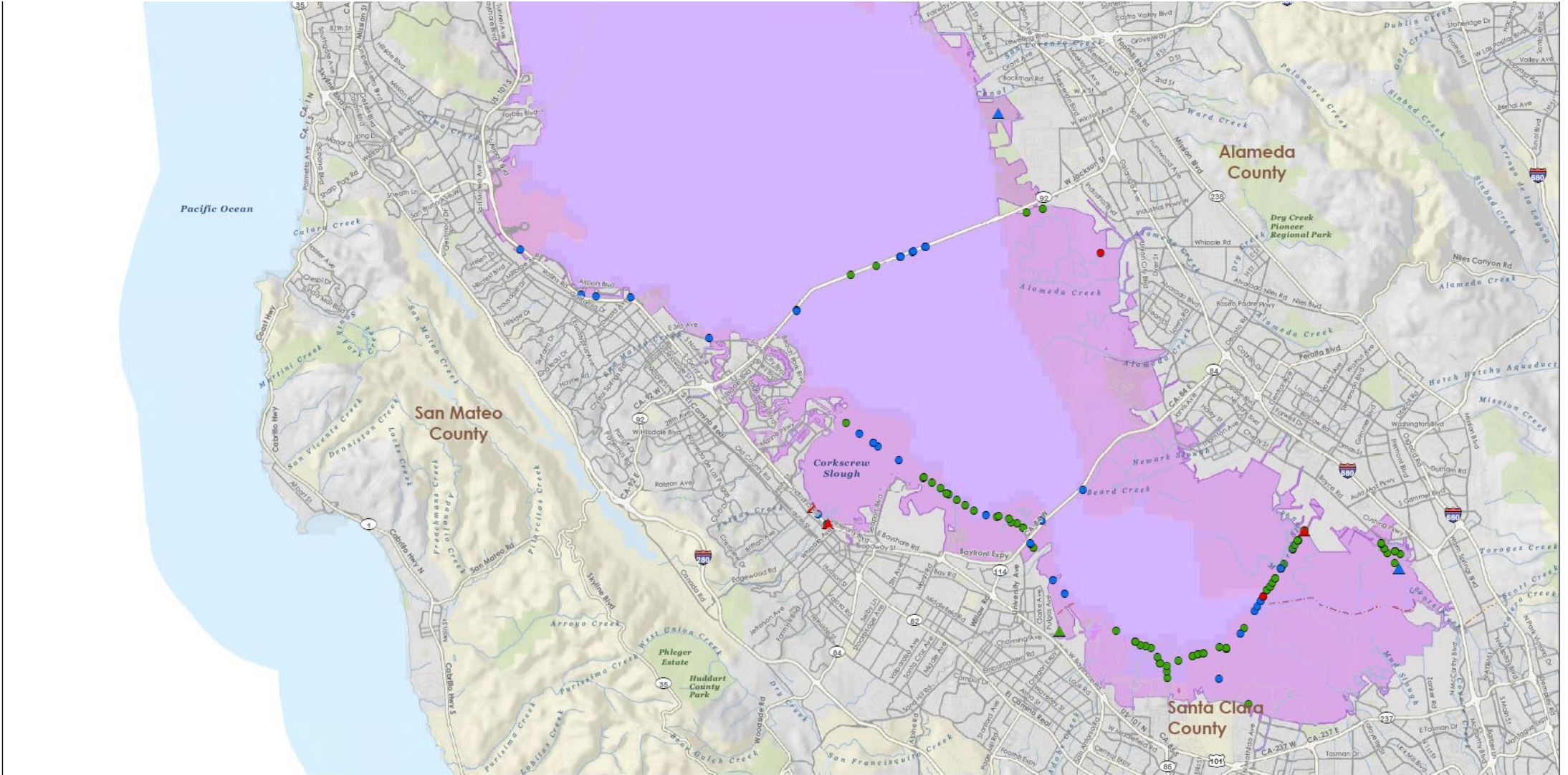
# PG&E PROJECTS WITHIN BCDC JURISDICTION AND PRIORITY USE AREAS 2023-2025: MAP 2





# PG&E PROJECTS WITHIN BCDC JURISDICTION AND PRIORITY USE AREAS

## 2023-2025: MAP 3





# ACTIVITIES AUTHORIZED

- Repairs and maintenance to facilities and accessory structures
- Installation of new interset structures
- Removal of existing facilities and restoration of disturbed areas
- Temporary fill placement (fewer than 180 days) for site access (such as construction matting or scaffolding)
- Utilization of land outside of PG&E's Rights of Way for materials and equipment staging or vehicle access for ongoing routine maintenance
- Activities fall within four classes (Class I, Class II.A., Class II.B., and Class III.)
- Any activity that doesn't qualify for the classes require a separate permit application



# TYPICAL TYPES OF AUTHORIZED ACTIVITIES

- Repair/replacement of guy wires, anchors, cross arms, and other similar overhead activity
- Repair pole and tower footings, remove tower foundations
- Maintenance or repair of overwater structures, boardwalks and roadways
- Install telecommunications equipment on towers and poles
- Replace public safety signage (i.e., high-voltage signs)
- Vegetation trimming
- Minor repairs to drainage systems (i.e., cleaning pipes and culverts, repair outfalls or rock crossings)





# CLASSES OF ACTIVITY

## Class I

- De minimis fill and/or extraction
- No public access impacts
- No work in water

## Class II.A.

- Shoreline Band jurisdiction
- Small amounts of fill and extraction
- No public access impacts
- No work in water

# CLASS OF ACTIVITY SUMMARY

## Class II.B.

- Shoreline Band Jurisdiction
- Fill and/or extraction
- Temporary public access impacts
- No work in water

## Class III

- May include activities anywhere in BCDC jurisdiction (including tidal marshland or in-water work)
- Fill and/or extraction
- No significant permanent adverse impacts
- Temporary public access impacts



# SUMMARY OF POTENTIAL IMPACTS

- No significant net increase in Bay Fill
- Some structures will be removed resulting in net decrease of fill
- Activities would not permanently impede or change existing public access and no public access improvements are required
- Public access and scenic view disruption may occur temporarily during construction, limited to 180 days and subject to mitigation
- No significant changes to use of existing facilities, therefore no impacts to nearby communities



# SELECTIVE SUMMARY OF CONDITIONS

- Implementation of AMMs and BMPs to limit impacts to habitat and wildlife (including tidal marsh and eelgrass)
- Class III activity in tidal marsh habitat requires reconnaissance surveys for special-status species (i.e., salt marsh harvest mouse, Ridgway's rail, etc.)
- Environmental work windows
- Rip rap specifications
- Site restoration for tidal marsh impacts
  - Restored to 90% of pre-construction condition within two years and monitoring and reporting
- **Note:** Special conditions are consistent with PG&E's maintenance permits with resources agencies (CDFW, USFWS, NOAA, USACE, RWQCB)





# QUESTIONS/DISCUSSION

