

May 2, 2024

Bay Conservation and Development Commission

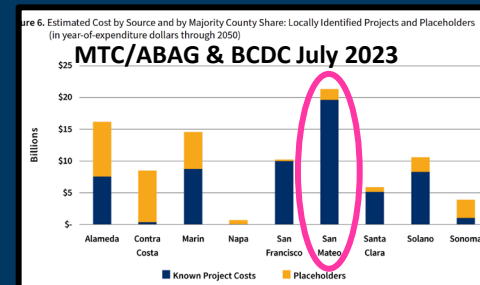
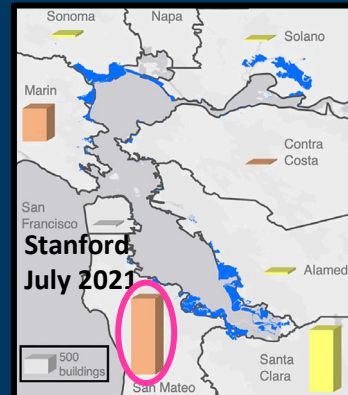
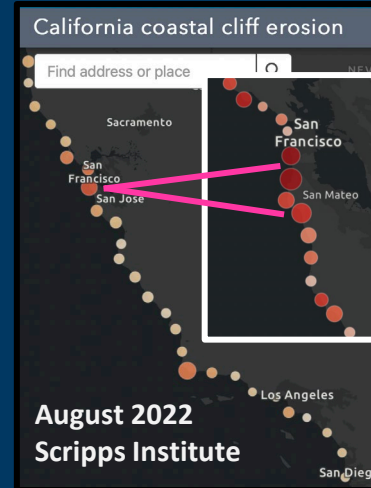
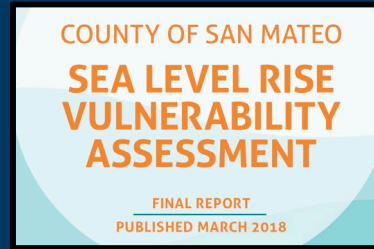
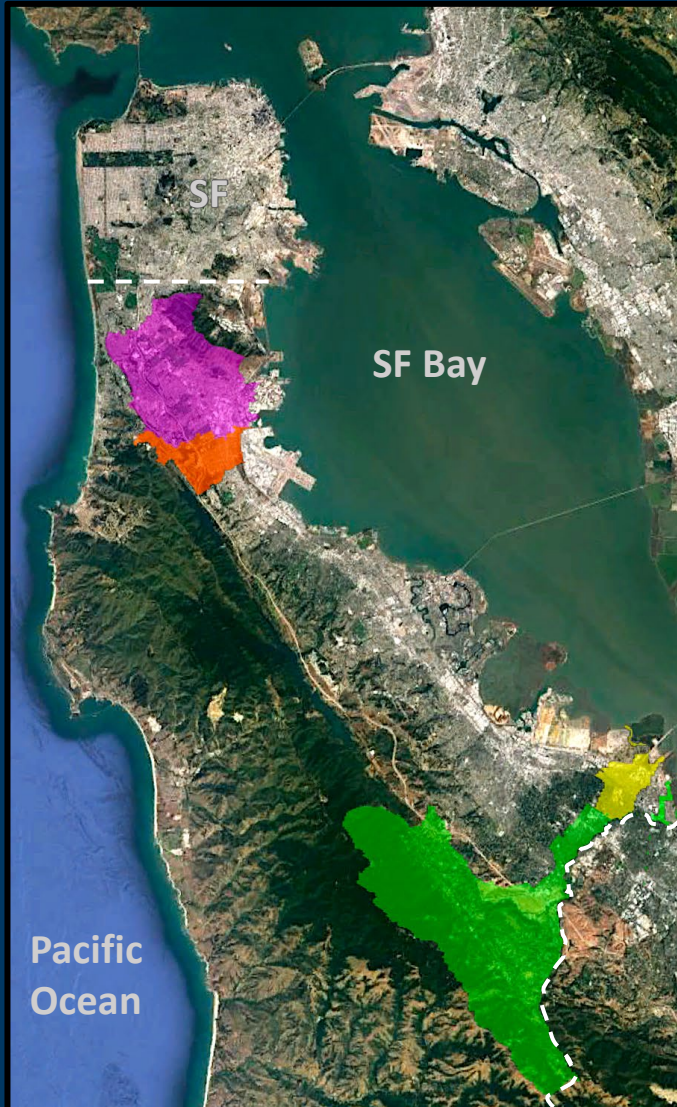
San Mateo County Flood and Sea Level Rise Resiliency District

Len Materman, CEO

info@OneShoreline.org

OneShoreline
Building Solutions for a Changing Climate

OneShoreline Background



Climate change is a transformative challenge that local jurisdictions were not well-positioned to address individually.

State law created OneShoreline on Jan. 1, 2020 as the first independent government agency in CA to plan and build regional resilience related to the water-related impacts of climate change: flooding, sea level rise, coastal erosion, and groundwater rise.

A holistic approach to:

- THREATS
- GEOGRAPHY
- OBJECTIVES

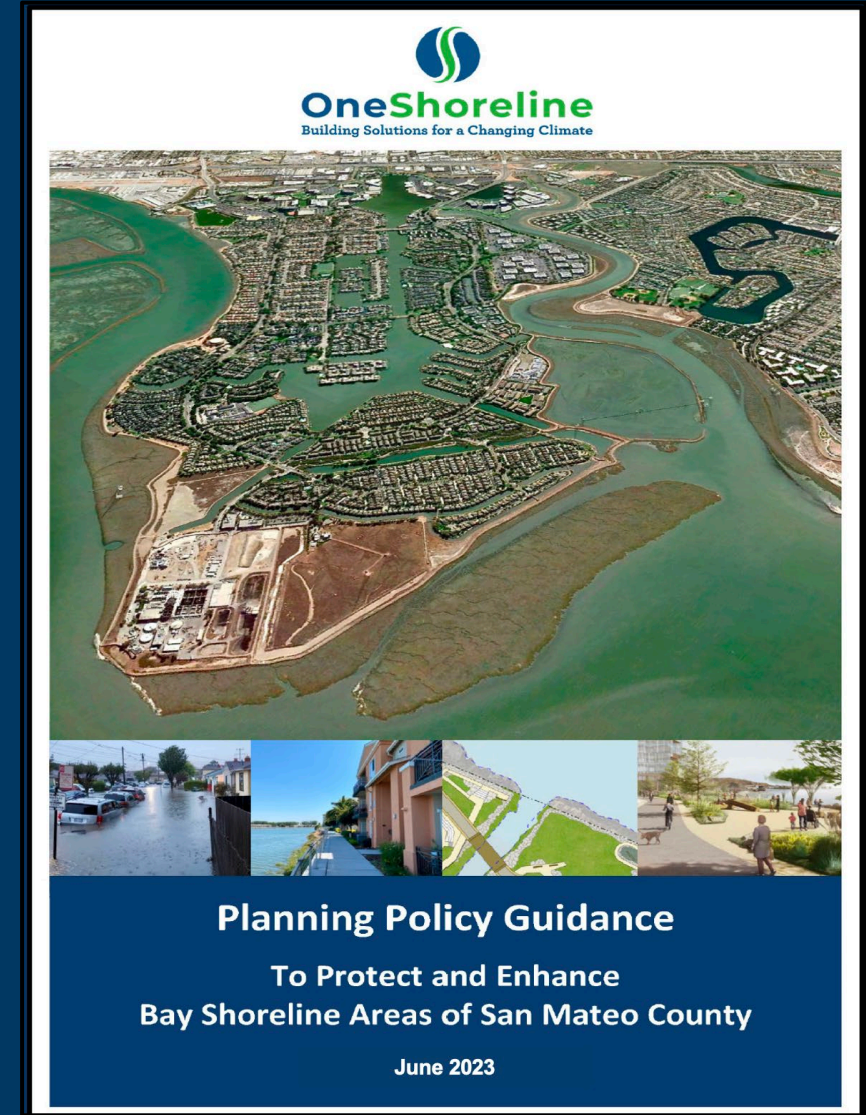
OneShoreline

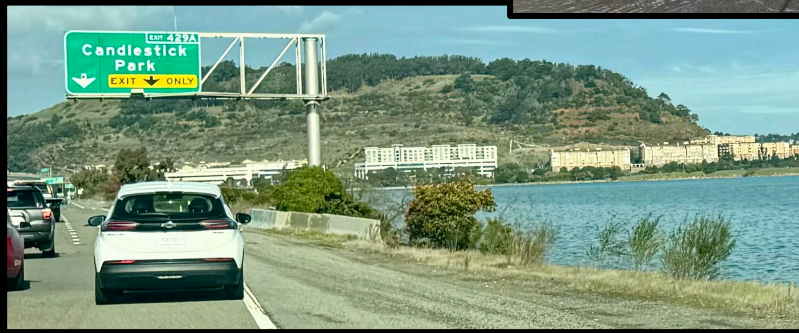
➤ Priorities

- Plan land use and infrastructure for future climate-driven conditions

Policies that guide what we want our communities to look like should require that we site and design buildings, utilities, transportation, open space, and other assets to function for their intended lifespan as the climate changes.

However, many local and permitting agency policies – and their approvals of projects near the water's edge – make building resilience for developed, natural, and public access areas more difficult and costly.





**San Mateo County
Flood and Sea Level Rise
Resiliency District**

Request for Proposals to Develop

**Planning Policy Guidance for
Resilient Public Infrastructure
in San Mateo County**

RFP Number 2024-01-24
Release Date: January 24, 2024

A tool to support
resilient land use
planning

[OneShoreline.org/planning-guidance](https://OnShoreline.org/planning-guidance)

OneShoreline Bayside Map of Future Conditions

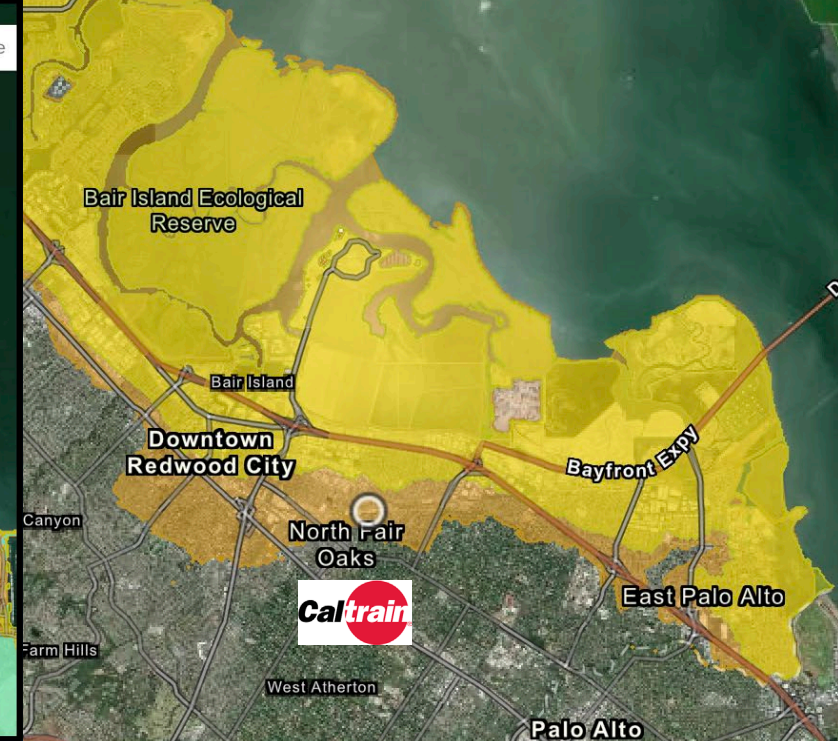
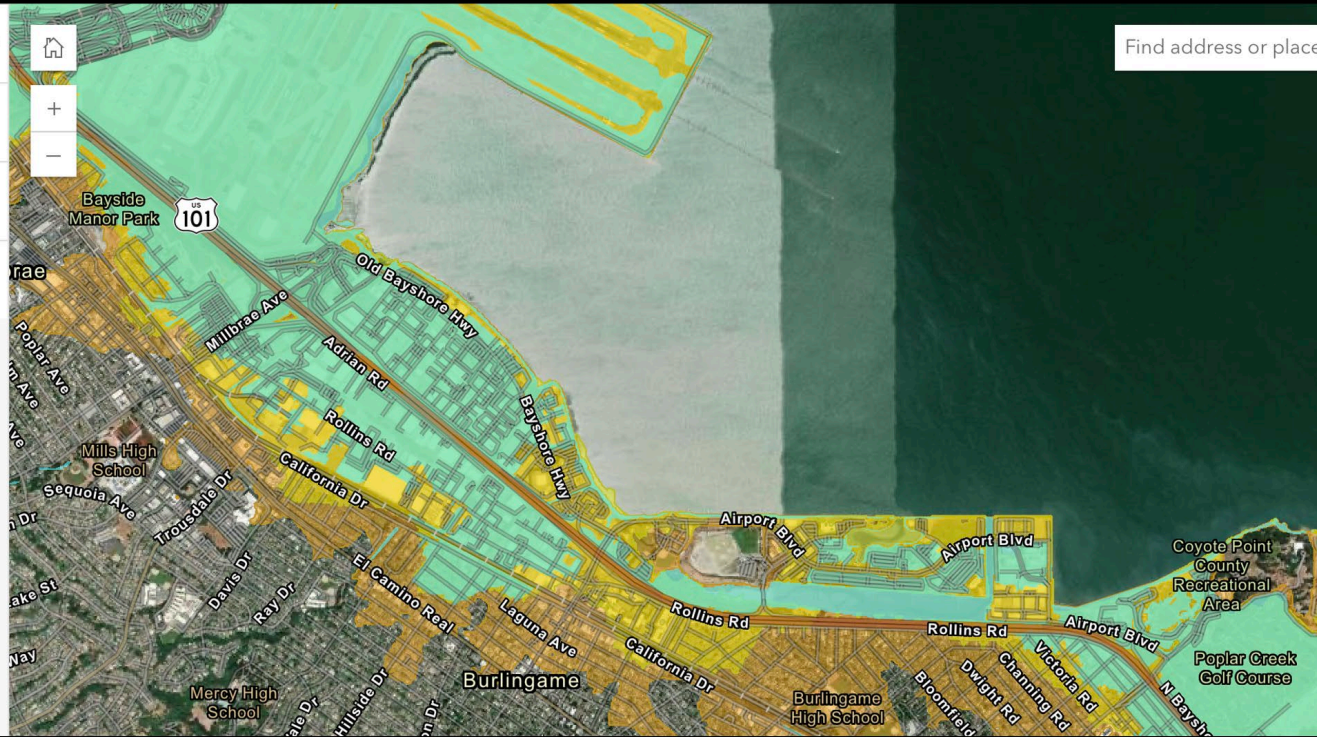


OneShoreline's Bay
Protection Standard

FEMA Special Flood Hazard
Area

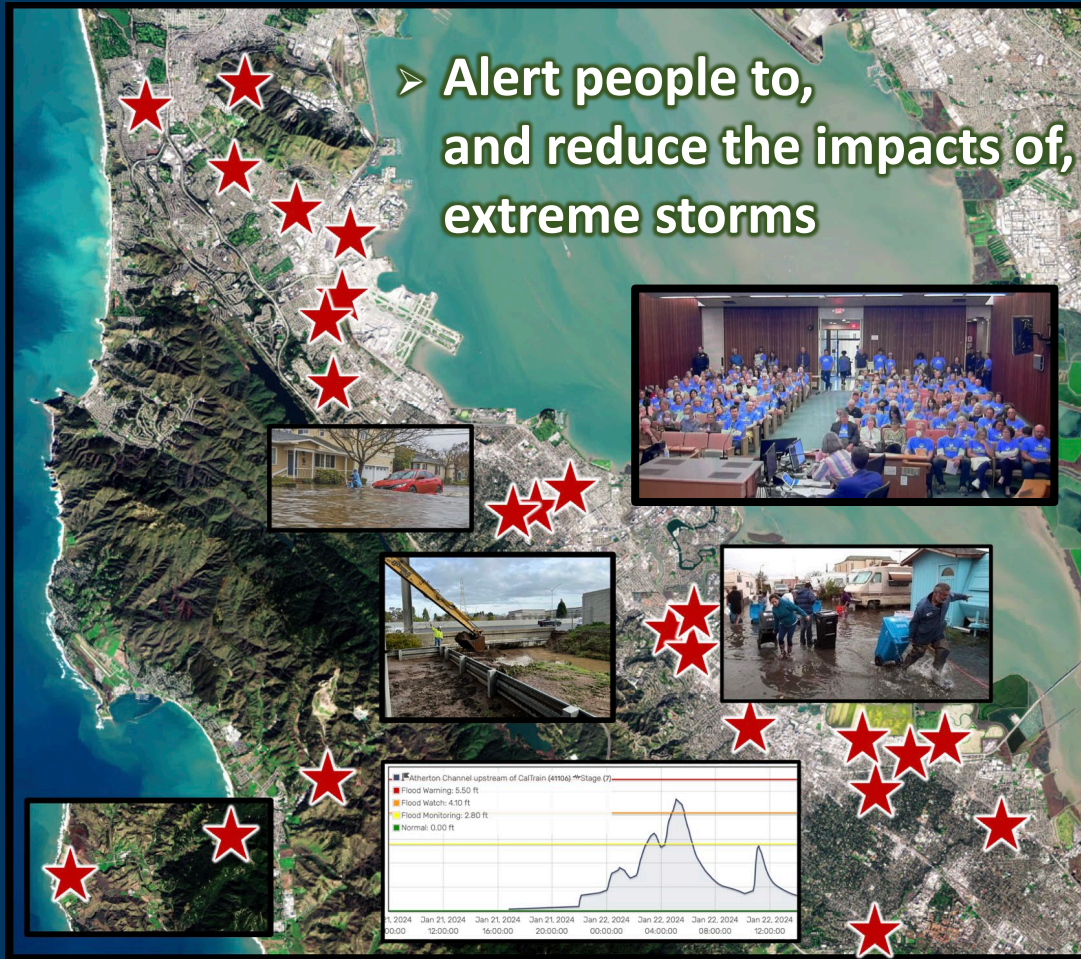
Sea Level Rise Overlay
District

Shallow Groundwater Rise
Overlay District



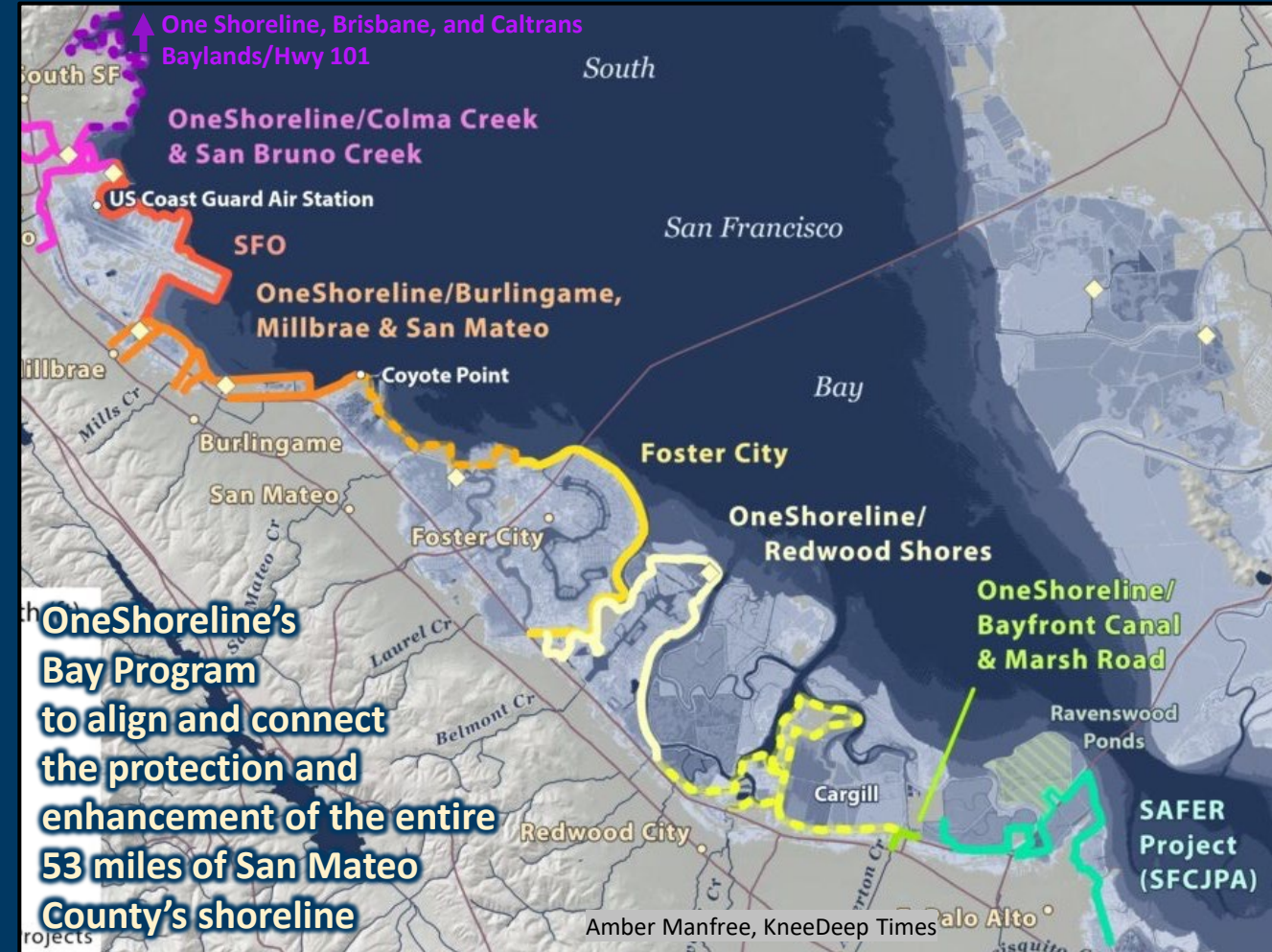
OneShoreline ➤ Priorities

- Alert people to, and reduce the impacts of, extreme storms



- Develop ongoing funding to sustain efforts for resilience today and long-term

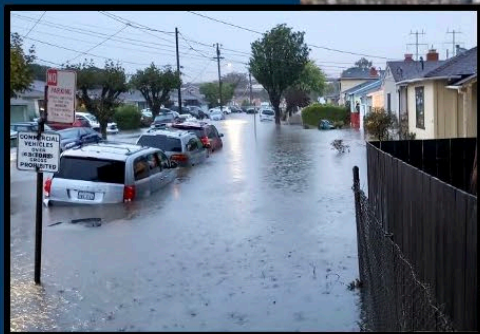
- Advance projects that align short- and long-term resilience across jurisdictions



King Tide



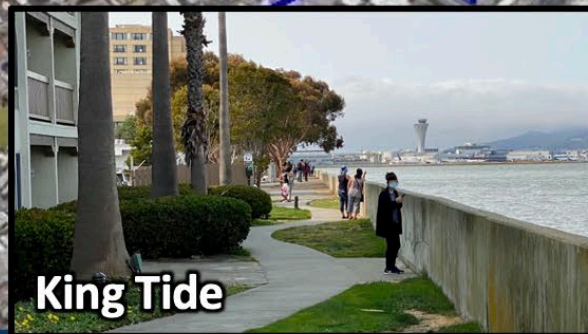
Atmospheric River
+ High Tide
7th Avenue



Atmospheric River
Landing Lane



King Tide



Holistic approach to THREATS & OBJECTIVES

Long-term climate resilience for areas with existing or potential:

Development



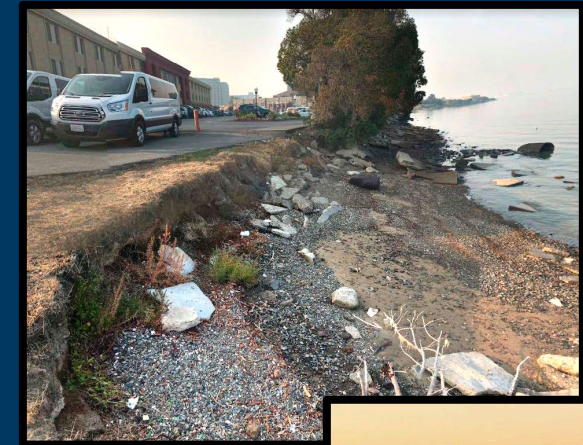
Protect areas along the shoreline and nearby creeks and lagoons against storm surge, waves, and sea level rise

Public Access/Trails

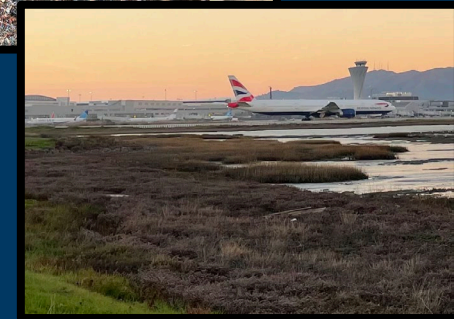


Enhance the shoreline area experience today and in the future

Habitat

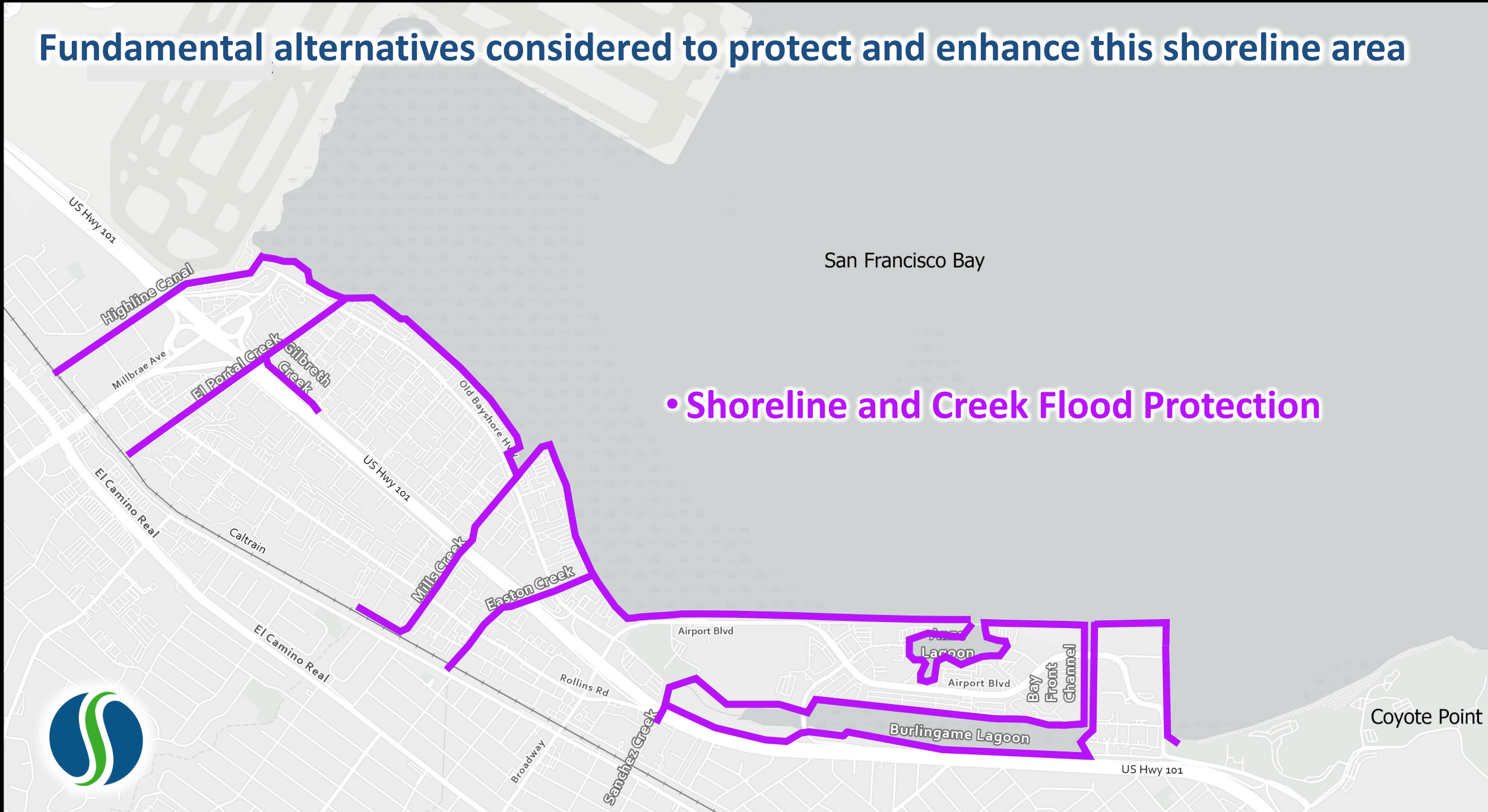


Promote healthy, sustainable ecosystems



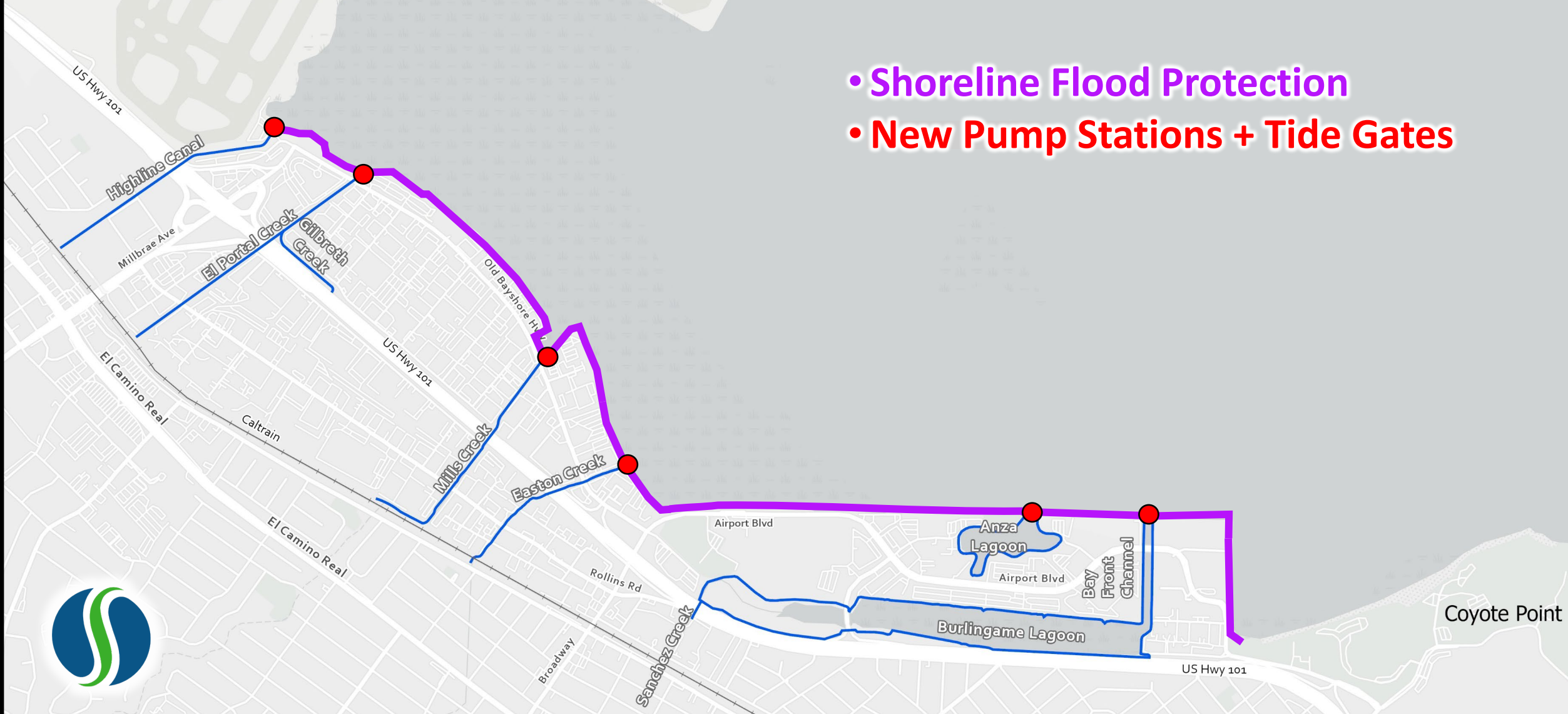
Fundamental alternatives considered to protect and enhance this shoreline area

- Shoreline and Creek Flood Protection



Fundamental alternatives considered to protect and enhance this shoreline area

- Shoreline Flood Protection
- New Pump Stations + Tide Gates



Fundamental alternatives considered to protect and enhance this shoreline area

- Offshore Wave Break
- Shoreline Flood Protection (Lower)
- New Pump Stations + Tide Gates



Fundamental alternatives considered to protect and enhance this shoreline area

- Offshore Closeable Barrier with Doors
- New Pump Station
- Shoreline enhanced for access & habitat



Project Constraints

- Area is heavily urbanized
- Six creeks and/or lagoons
- FEMA accreditation
- Don't attract flying birds

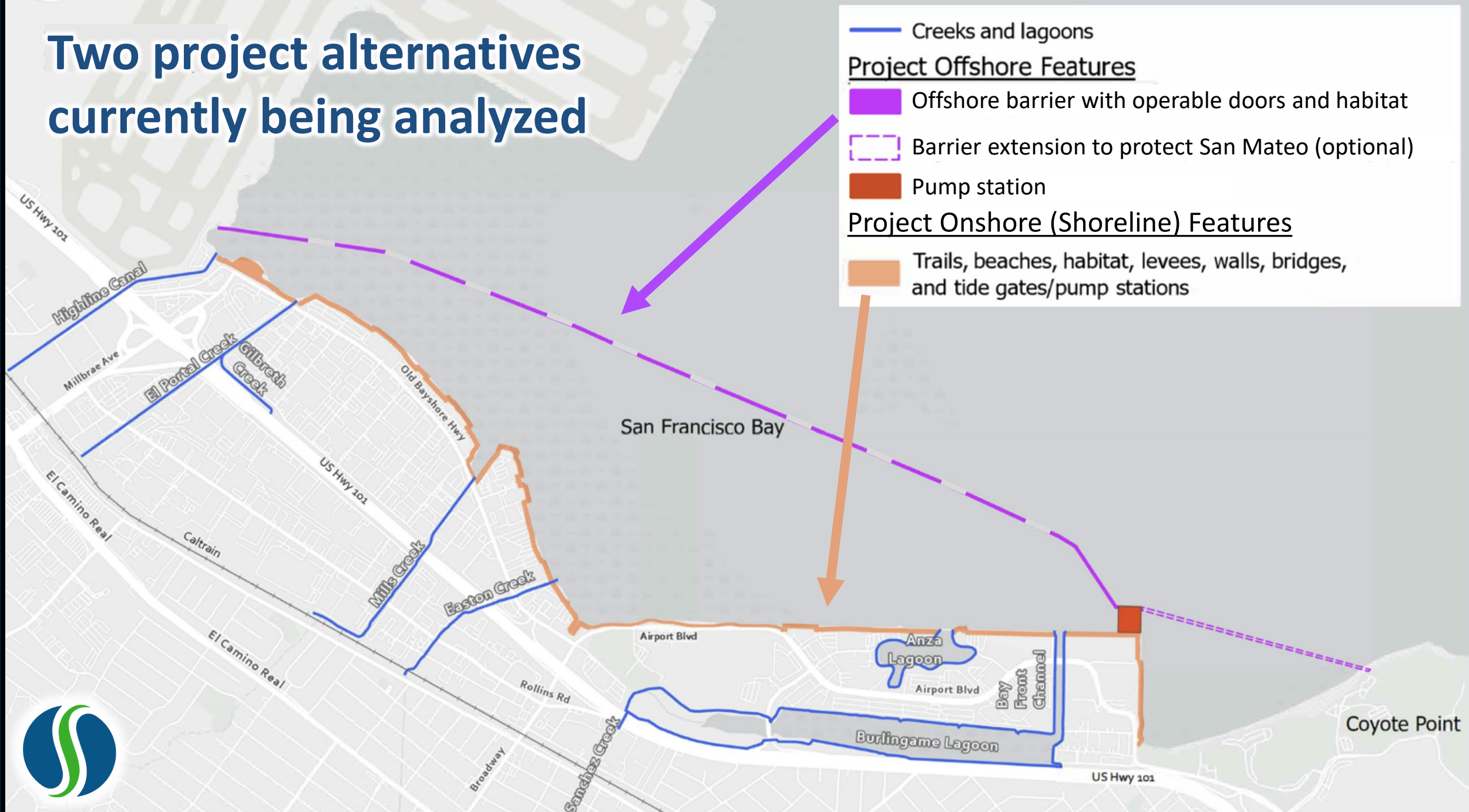
Existing and recently permitted developments along water reduce opportunities to incorporate nature into shoreline and creek resilience projects.

Legend

- Shoreline Barrier Back Boundary
- Area Available For Shoreline Barrier Outside The Bay Water
- Shoreline (MHHW)



Two project alternatives currently being analyzed





Thank you

