



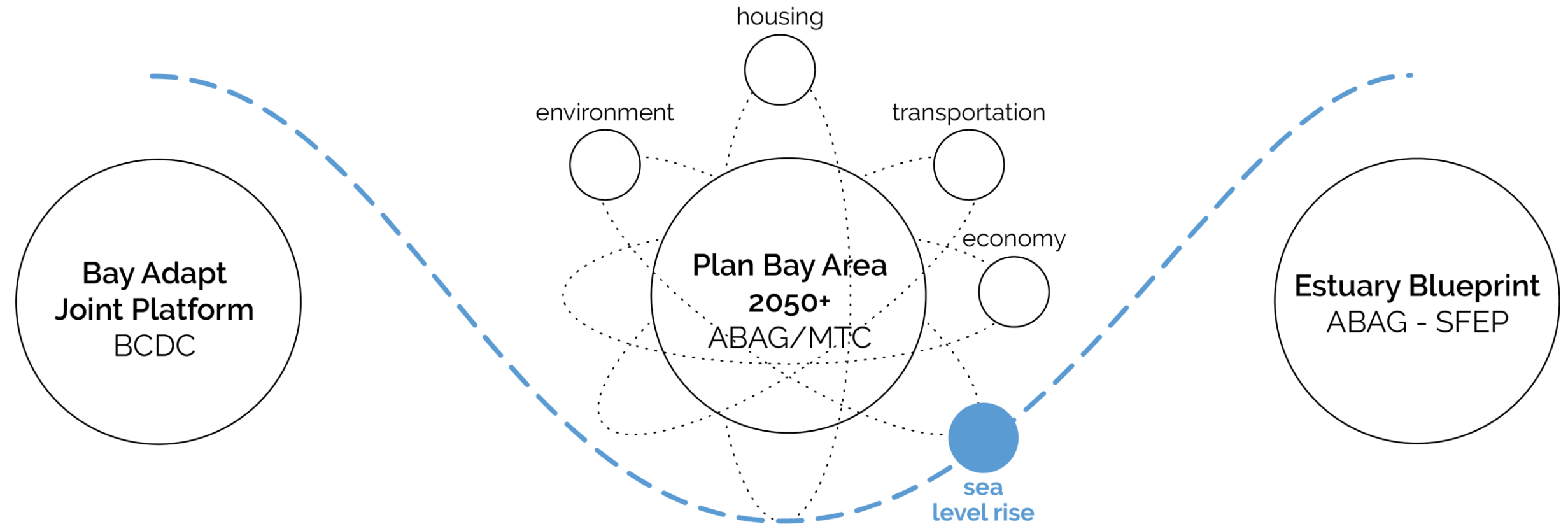
# Briefing on Plan Bay Area 2050+

Plan Update and the Incorporation of Sea Level Rise

**BCDC Commission**

February 1, 2024

# Regional Sea Level Rise Efforts



BCDC led a two-year regional process to identify actions to advance adaptation efforts. The **Joint Platform** organizes the 21 necessary actions, and has now pivoted to implementation, including recently kicking off the Regional Shoreline Adaptation Plan.

**Plan Bay Area 2050+** is a comprehensive regional plan that integrates sea level rise with other planning topics. The plan incorporates adaptation projects identified as part of the Sea Level Rise Adaptation Funding and Investment Framework.

SFEP leads the **Estuary Blueprint**, a regional plan that identifies actions needed for a healthy and resilient San Francisco Estuary. The 2022 Blueprint is currently guiding implementation actions that align with regional efforts.

# Plan Bay Area 2050+: A Brief History

*Plan Bay Area 2050+ is a long-range plan charting a course for the nine-county San Francisco Bay Area. It is a limited and focused update to Plan Bay Area 2050, adopted in October 2021.*



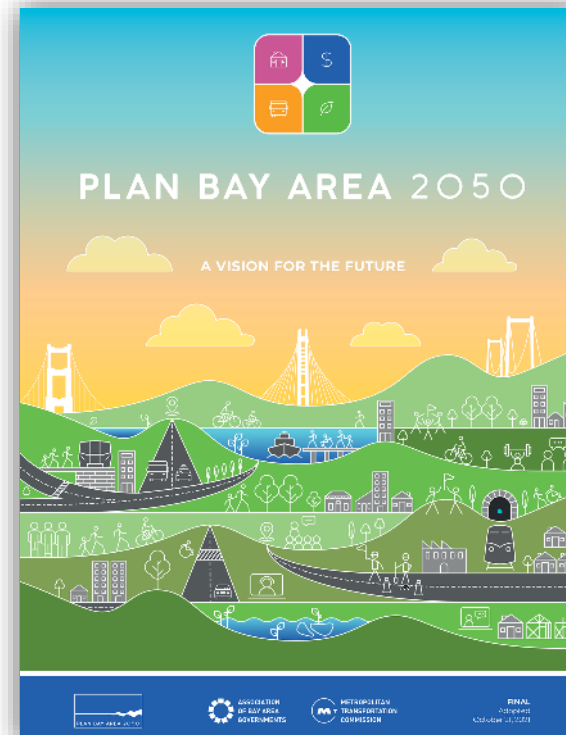
## PLAN BAY AREA

Adopted: 2013



## PLAN BAY AREA 2040

Adopted: 2017



## PLAN BAY AREA 2050

Adopted: 2021



## PLAN BAY AREA 2050+

Anticipated Adoption: 2025

# Plan Bay Area 2050+: Themes and Strategies



**Maintain and Optimize the Existing System**



**Create Healthy and Safe Streets**



**Build a Next-Generation Transit Network**



**Protect and Preserve Affordable Housing**



**Spur Housing Production at All Income Levels**



**Create Inclusive Communities**

## Plan Bay Area 2050+ 35 Adopted Strategies & 11 Themes



**Improve Economic Mobility**



**Shift the Location of Jobs**



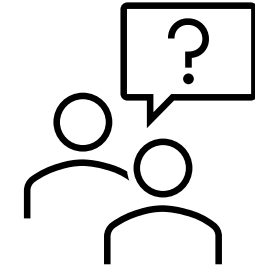
**Reduce Risks from Hazards**



**Expand Access to Parks and Open Space**



**Reduce Climate Emissions**



## What is a strategy?

A strategy is either a **public policy or set of investments** that can be implemented in the Bay Area over the next 25 years at the local, regional, or state levels; **a strategy is not a near-term action or legislative proposal.**

For more detailed descriptions of Plan Bay Area 2050's adopted strategies, please see [\*Plan Bay Area 2050 Executive Summary\*](#).



## Strategies to Reduce Risks from Hazards

## Strategies to Expand Access to Parks and Open Space

## Strategies to Reduce Climate Emissions

1. Adapt to Sea Level Rise	4. Maintain Urban Growth Boundaries	7. Expand Commute Trip Reduction Programs
2. Support for Seismic & Wildfire Home Retrofits	5. Protect and Manage High-Value Conservation Lands	8. Expand Clean Vehicle Initiatives
3. Fund Decarbonization and Water Efficiency Upgrades in All Buildings	6. Expand Urban Greening	9. Expand Transportation Demand Management Initiatives



# Integrating the Funding & Investment Framework



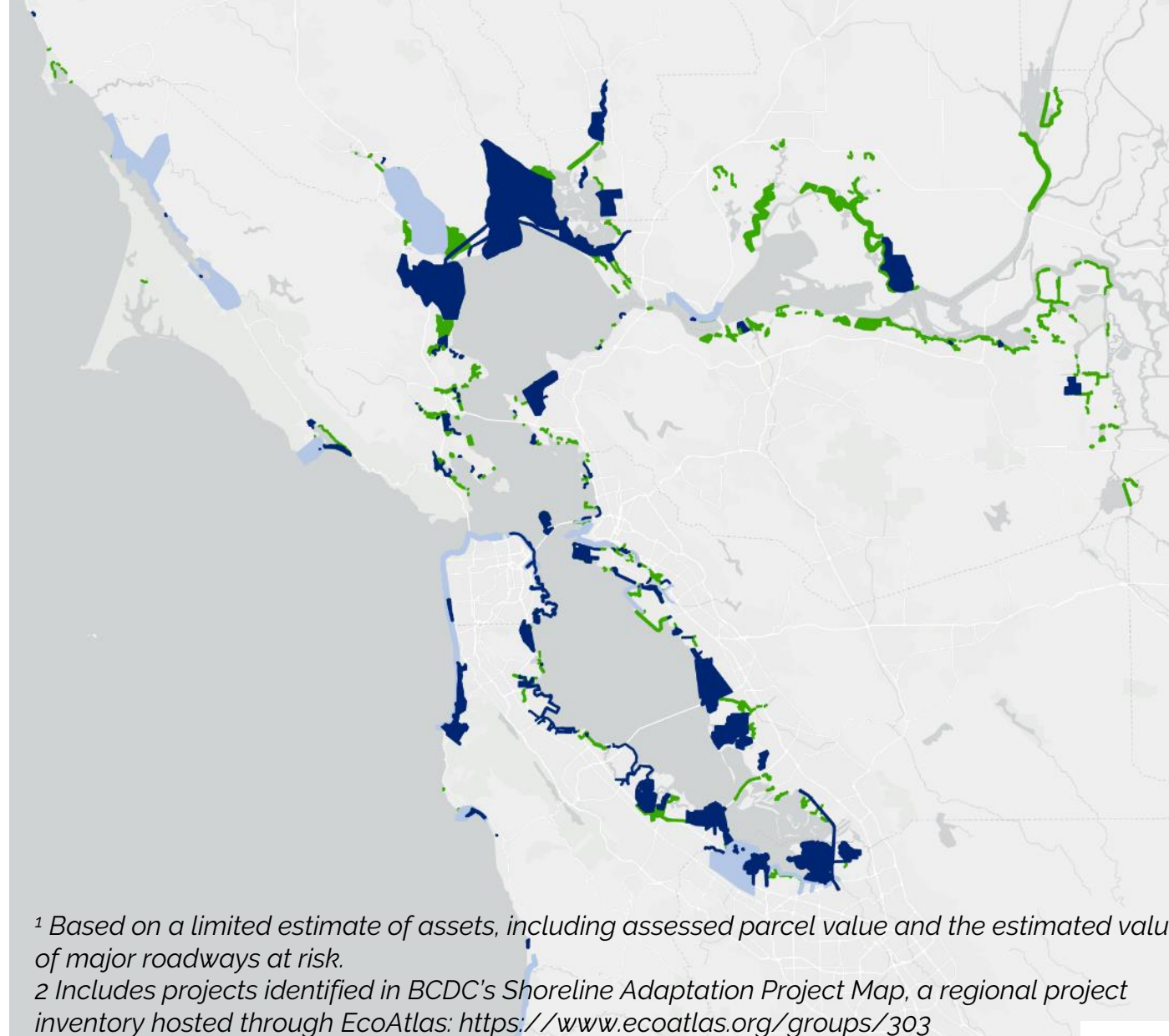
The Sea Level Rise Adaptation Funding and Investment Framework built on Plan Bay Area 2050, Bay Adapt, and the Shoreline Adaptation Project Map.

## \$110 billion

Estimated cost of sea level rise adaptation through 2050 (in Year of Expenditure dollars)

-  **\$52 billion:** Estimated cost for 350+ known or planned projects<sup>2</sup>
-  **\$54 billion:** Estimated placeholder cost for areas with adaptation needs<sup>3</sup>
- **\$3 billion:** Estimated additional sediment management needs

While the cost is high, the Framework also estimated **\$230 billion** in assets at risk if the region doesn't act<sup>1</sup>.



<sup>1</sup> Based on a limited estimate of assets, including assessed parcel value and the estimated value of major roadways at risk.

<sup>2</sup> Includes projects identified in BCDC's Shoreline Adaptation Project Map, a regional project inventory hosted through EcoAtlas: <https://www.ecoatlas.org/groups/303>

<sup>3</sup> Placeholder needs determined by assuming the protection of the shoreline in place.

# Strategy EN1: Sea Level Rise in Plan Bay Area 2050+



In Plan Bay Area 2050+, **Strategy EN1: Adapt to Sea Level Rise** uses the outputs of the Framework to adapt shoreline communities, infrastructure, and ecosystems, affected by sea level rise. EN1 analysis will support the development of Plan Bay Area 2050+, and will set the region up for a Regional Funding Strategy. The work has been developed in partnership with BCDC, with outputs embedded in efforts at both agencies.

## Sea Level Rise Adaptation Funding and Investment Framework

*2021 - 2023*

- Created the first regional inventory of sea level rise projects
- Developed a cost estimate for 4.9 feet of inundation by 2050, and identified future revenue sources



## Plan Bay Area 2050+ Strategy EN1: Adapt to Sea Level Rise

*2023 - 2024*

- Integrates the Framework project list as well as technical assumptions
- Explores sorting projects into “bins” - smaller, more actionable funding categories for adaptation need.



## Regional Funding Strategy

*Estimated 2025+*

- Further categorization of projects, updating project inventory, and updating future revenue sources
- Scope will be developed through a multi-agency Memorandum of Understanding (*in progress*)

# Refreshing the Priority Conservation Area Framework



## Background

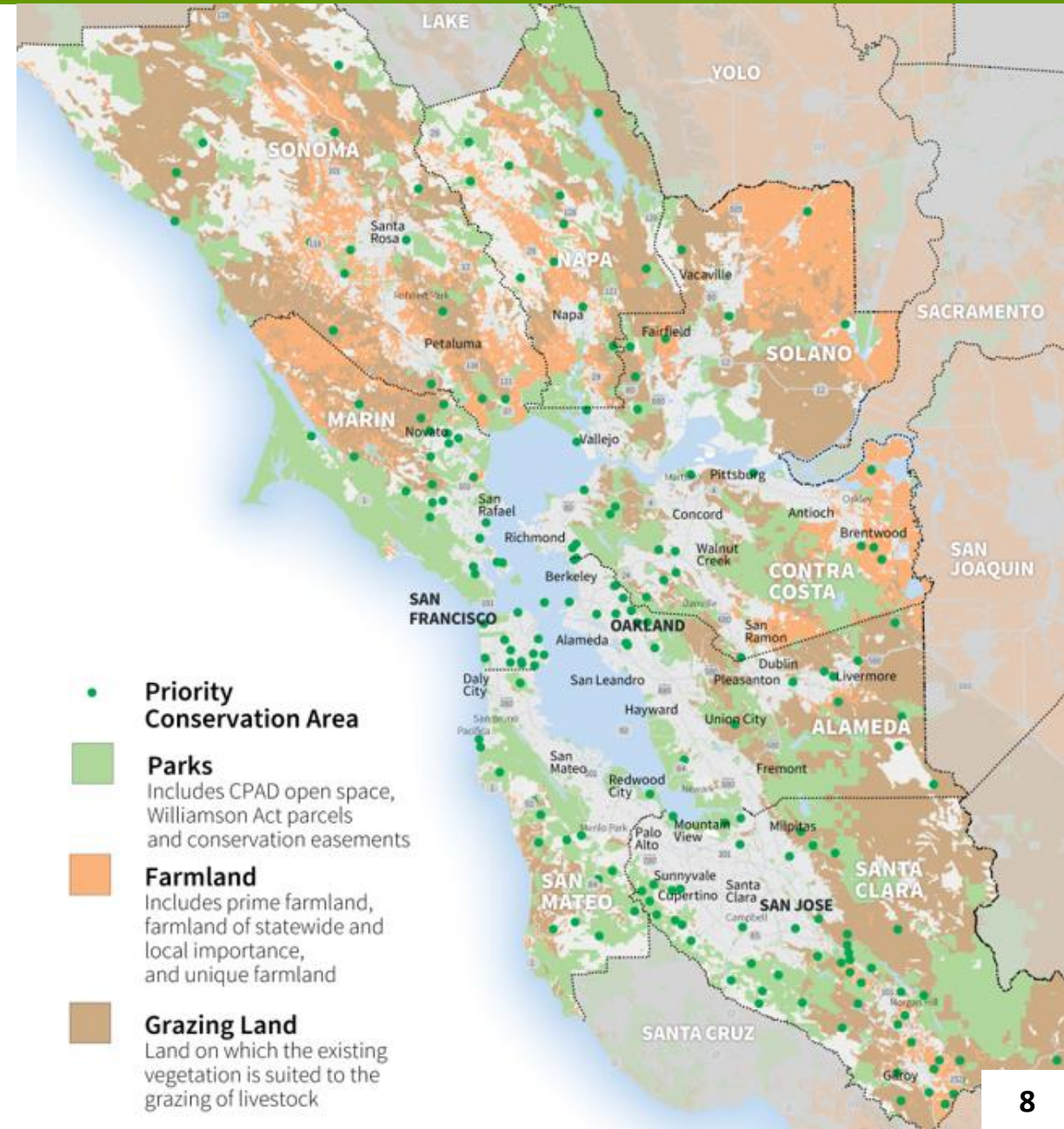
- Priority Conservation Areas (PCAs) were conceived at the same time as Priority Development Areas (PDAs) as part of a planning framework established in 2007.
- MTC launched the PCA Refresh in Summer 2022

## Refreshing the PCA Framework

- PCAs are designated as specific “types.” Climate Adaptation is proposed as a new type that is intended to be paired with existing types: Natural Lands, Working Lands, Recreation, and Urban Greening.
- At the conclusion of the Refresh, MTC/ABAG will work with local partners to implement the reforms, including a process to amend existing PCAs and nominate new PCAs.

## How PCAs connect to Plan Bay Area

- PCAs will link directly to two Plan Bay Area 2050+ strategies, EN5: Protect and Manage High-Value Conservation Lands and EN6: Expand Urban Greening.



# Plan Bay Area 2050+: Next Steps and Getting Involved

There are many ways to get involved in Plan Bay Area 2050+ in the coming months. Beyond summer 2024, the plan will ultimately identify specific sea level rise actions for MTC/ABAG to take in the next five years with the Plan Bay Area 2050+ Implementation Plan.

## Refining Strategy EN1: Adapt to SLR

February – April 2024

- Update the sea level rise project data with the support of local staff, including identifying new projects.

Please contact Rachael Hartofelis for more information – [rhartofelis@bayareametro.gov](mailto:rhartofelis@bayareametro.gov) – Resilience Planner

## Plan Bay Area 2050+ Final Blueprint

Spring – Summer 2024

- Spring engagement will seek feedback on housing, economy, transportation, and environmental strategies.

Please contact Chirag Rabari for more information – [crabari@bayareametro.gov](mailto:crabari@bayareametro.gov) – Plan Bay Area 2050+ Project Manager