

Plan Map 3

Suisun Bay and Marsh

PLAN MAP NOTES

Suisun Marsh - Thousands of acres of managed wetlands are maintained primarily by private duck-hunting clubs as migratory waterfowl habitat which also provides habitat for other wildlife species such as shorebirds. Areas are diked, but dikes are opened for periodic flooding. Suisun Resource Conservation District assists duck clubs in the protection and enhancement of managed wetlands.

Suisun Marsh Protection Plan - The Protection Plan is a more specific application of the policies of the Bay Plan because of the unique characteristics of the Suisun Marsh. The policies of both the Bay Plan and the Protection Plan apply within the Marsh in the absence of a certified Suisun Marsh Local Protection Program component. In event of policy conflict between the Bay Plan and Protection Plan, the policies of the Protection Plan control. Refer to maps and policies of the Protection Plan and the Suisun Marsh Preservation Act of 1977 for more specific information.

Suisun Marsh Local Protection Program - Pursuant to the Suisun Marsh Preservation Act of 1977, the Commission has certified the Local Protection Program components of Solano County, Solano County Local Agency Formation Commission, the cities of Fairfield and Suisun City, Suisun Resource Conservation District, and Solano County Mosquito Abatement District. Marsh development permits for development in the Suisun Marsh must be consistent with the Local Protection Program component of the local agency with jurisdiction over the project. See the Preservation Act and the components of the Local Protection Program for more information.

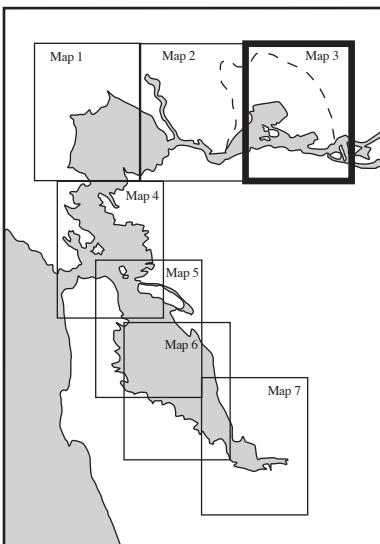
Collinsville Area - The Collinsville-Montezuma Slough area is adjacent to the deep water shipping channel, has rail facilities nearby, and consists of flat land. The shoreline fronting on the main shipping channel is limited, however, and this relatively small frontage should be carefully planned and shared for maximum industrial development.

Recreational Potential - Extensive, valuable recreational potential in river and island areas (e.g. Sherman Island—"Sherman Lake" area popular for boating, fishing). Recreational use should be encouraged.

Concord Naval Weapons Station - Plan maps indicate recommended use for bayfront military installations if one or more of these bases is ever declared surplus by the military. The Bay Plan does not advocate the closing of any military installation.

San Francisco Bay National Estuarine Research Reserve (Rush Ranch Open Space Preserve) - One of two sites in the Bay, the other being China Camp State Park, with one additional site in the Delta, named Browns Island Regional Shoreline. These sites are part of a federal-state cooperative scientific research and education program that is part of a national system of estuarine research reserves. The Commission supports the program as a member of the Management Advisory Board.

San Francisco Bay Area Water Trail - Pursuant to state legislation, the Commission, in partnership with the State Coastal Conservancy, Association of Bay Area Governments and interested parties, is preparing a San Francisco Bay Area Water Trail plan. The Water Trail will provide a series of linked landing and launching sites around the Bay for human-powered boats and beachable sail craft, and provide for diverse, water-accessible overnight accommodations, including camping.



Amended September 2011

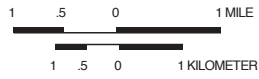
Plan Map 3

Bay Plan Policies and Commission Suggestions

BAY PLAN POLICIES

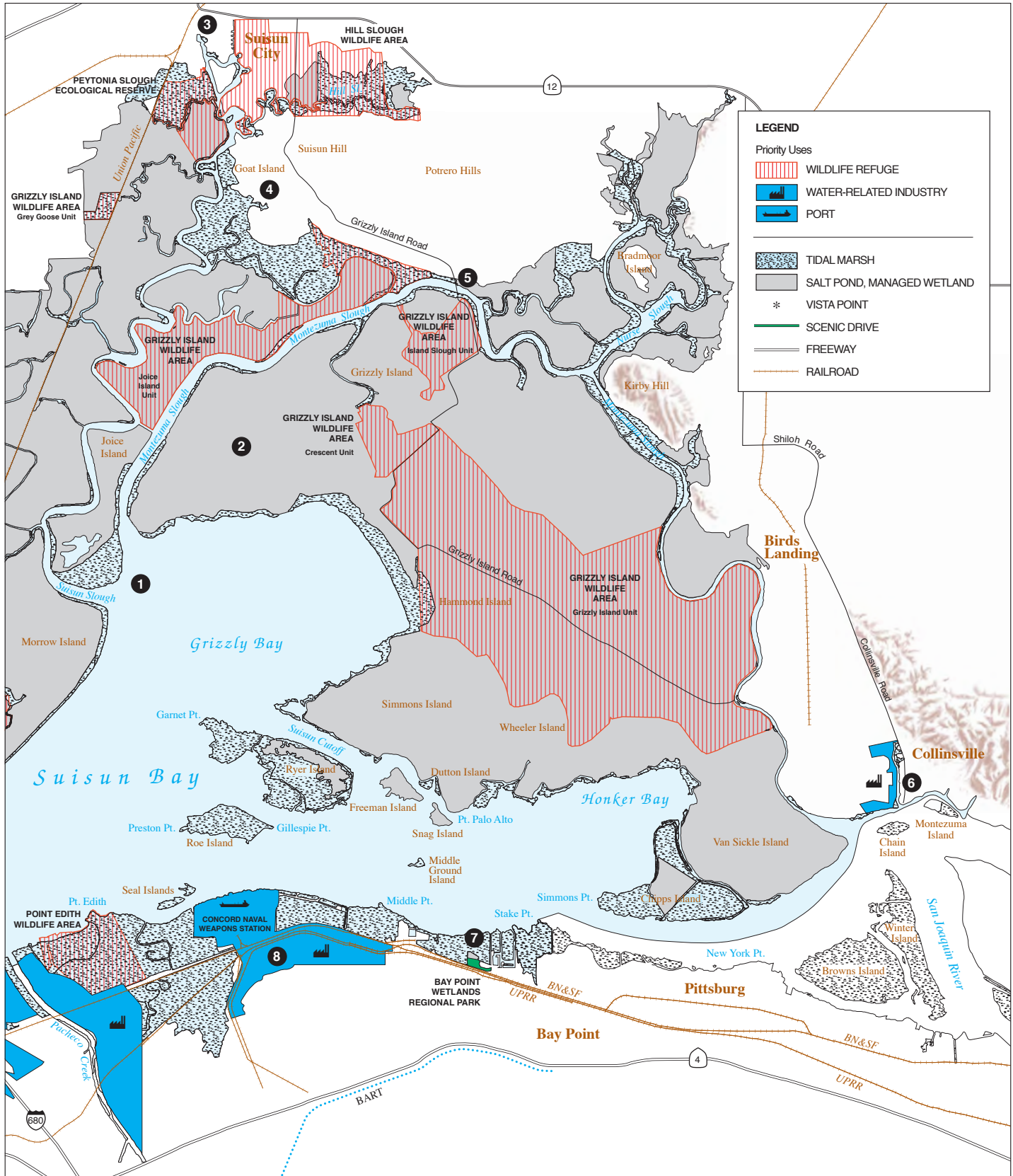
- 1 **Montezuma and Suisun Sloughs** - May be dredged for small boat uses.
- 2 **Regional Restoration Goal for Suisun Bay** - Restore tidal marsh on the northern and southern sides of Suisun Bay, Grizzly Bay and Honker Bay; enhance managed marshes to increase their ability to support waterfowl. See the Baylands Ecosystem Habitat Goals report for more information.
- 3 **Suisun City** - Preserve boat launch ramp, transient tie-up and small boat launch.
- 4 **Rush Ranch Open Space Preserve, San Francisco Bay National Estuarine Research Reserve** - Continue federal-state cooperative scientific research and education program that is part of a national system of estuarine research reserves. Provide wildlife compatible recreation opportunities, including natural, historical and cultural interpretation and education, hiking, wildlife viewing, and picnicking.
- 5 **Beldon's Landing** - Preserve boat launch and park, including access for non-motorized small boats. Provide signage regarding fish consumption advisories for anglers.
- 6 **Collinsville** - Industries should share limited deep water frontage. Wetland restoration or enhancement of diked wetland areas may occur provided that the restoration or enhancement project: (1) is carried out in a manner that will not preclude use of the deep water frontage and upland portion of the site for water-related industry use; (2) will not result in any adverse environmental impacts on the Suisun Marsh; (3) provides for the protection of adjacent property from flooding that could be caused by the project; and (4) includes a long-range management program that assures the proper stewardship of the wetland. Wetland restoration and enhancement projects may be carried out using dredged material from the Bay region. Wetland restoration and enhancement projects should be designed so as not to restrict development and operation of marine terminals on the deep water shoreline nor impede the movement of waterborne cargo, materials and products from the shoreline terminal to the upland portion of the site. A portion of the site may be used as a regional dredged material rehandling facility for Bay Area projects.
- 7 **Bay Point Wetlands** - Restore tidal wetlands and provide opportunities for shoreline trail access, wildlife observation, and non-motorized small boat access.
- 8 **Concord Naval Weapons Station** - When no longer owned or controlled by the federal government, give first consideration to port or water-related industrial use. Port and industrial use should be restricted so that they do not adversely affect marshes. See Seaport Plan. If not needed for port or water-related industry use, consider waterfront park use.

COMMISSION SUGGESTIONS



Plan Map 3

Suisun Bay and Marsh



LEGEND

Priority Uses

- WILDLIFE REFUGE
- WATER-RELATED INDUSTRY
- PORT

- TIDAL MARSH
- SALT POND, MANAGED WETLAND
- VISTA POINT
- SCENIC DRIVE
- FREEWAY
- RAILROAD